

Bowser Castle (4)

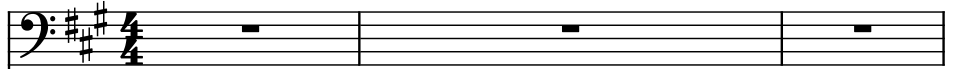
Composer: Kenta Nagata

Game: Super Mario Kart

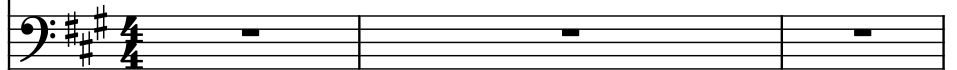
pianogame.org

♩ = 144

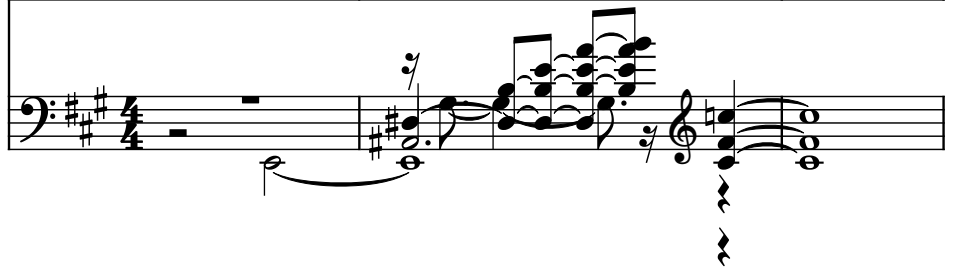
Bass Guitar, Picked Bass (left)



Bass Guitar, Picked Bass (right)



Brass Synthesizer, Synth Brass 2



4

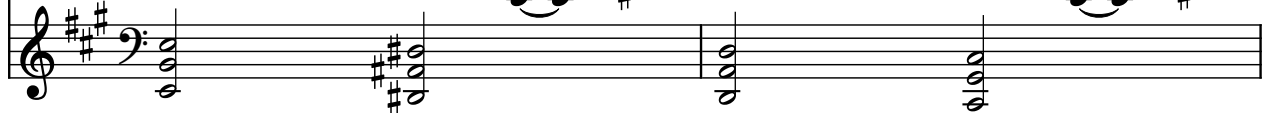
B. Guit.



B. Guit.



Synth.



6

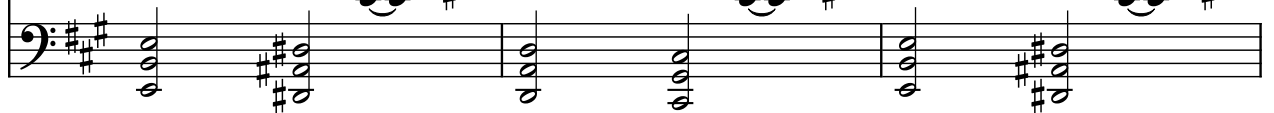
B. Guit.



B. Guit.



Synth.



9

B. Guit.



B. Guit.



Synth.



12

B. Guit.




B. Guit.




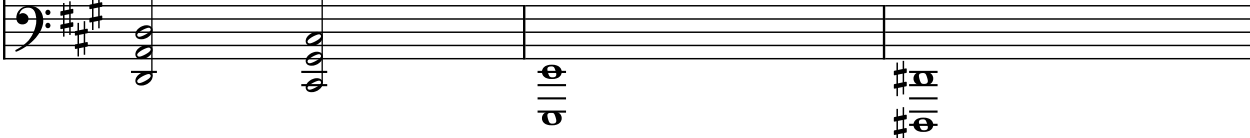
Synth.



15

B. Guit. 

B. Guit. 

Synth. 

18

B. Guit. 

B. Guit. 

Synth. 


21


B. Guit. 

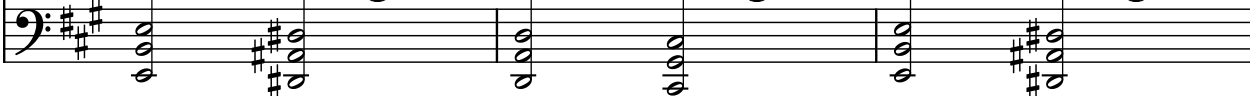
B. Guit. 

Synth. 


25


B. Guit. 

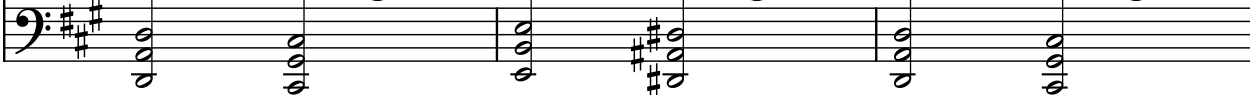
B. Guit. 

Synth. 


28


B. Guit. 

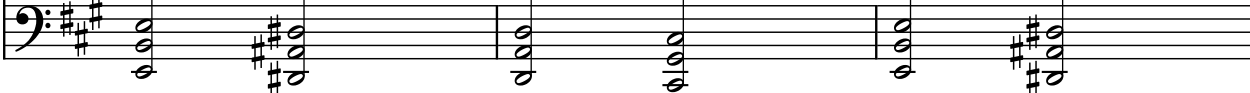
B. Guit. 

Synth. 


31


B. Guit. 

B. Guit. 

Synth. 

34

B. Guit. 

B. Guit. 

Synth. 


37


B. Guit. 

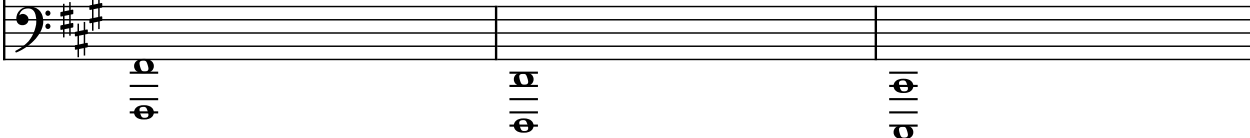
B. Guit. 

Synth. 

40

B. Guit. 

B. Guit. 

Synth. 

43

B. Guit. 

B. Guit. 

Synth. 

46

B. Guit.

B. Guit.

Synth.

Measures 46-48. The score features two bass guitar parts and a synth part. The key signature is two sharps (F# and C#). The bass guitars play a rhythmic pattern of eighth notes, while the synth provides a harmonic accompaniment with chords and single notes.

49

B. Guit.

B. Guit.

Synth.

Measures 49-51. The score features two bass guitar parts and a synth part. The key signature is two sharps (F# and C#). The bass guitars play a rhythmic pattern of eighth notes, while the synth provides a harmonic accompaniment with chords and single notes.

52

B. Guit.

B. Guit.

Synth.

Measures 52-54. The score features two bass guitar parts and a synth part. The key signature is two sharps (F# and C#). The bass guitars play a rhythmic pattern of eighth notes, while the synth provides a harmonic accompaniment with chords and single notes.

55

B. Guit.

B. Guit.

Synth.

Measures 55-57. The score features two bass guitar parts and a synth part. The key signature is two sharps (F# and C#). The bass guitars play a rhythmic pattern of eighth notes, while the synth provides a harmonic accompaniment with chords and single notes.