

# Chase

Composer: Kenichiro Fukui

Game: Einhandler

[pianogame.org](http://pianogame.org)

♩ = 150

Bass Synthesizer, Bass



Bass Synthesizer, Bass (echo)



Bass Synthesizer, Bass (echo)

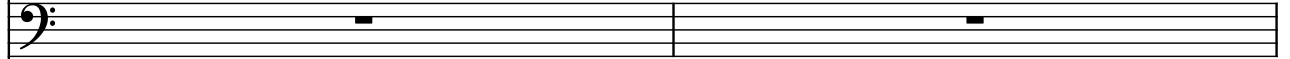


5

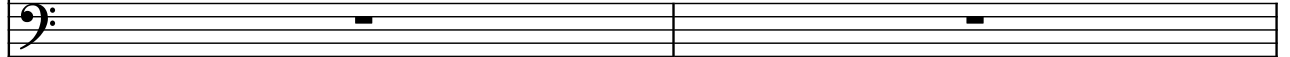
Synth.



Synth.



Synth.

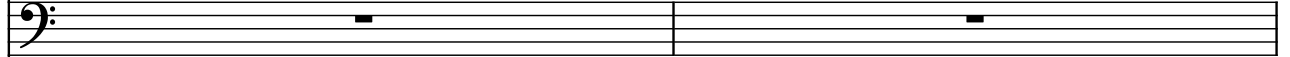


7

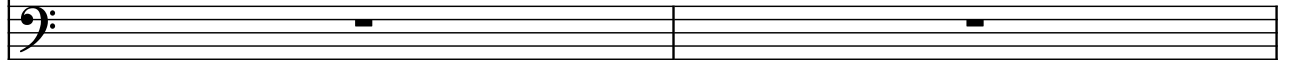
Synth.



Synth.



Synth.

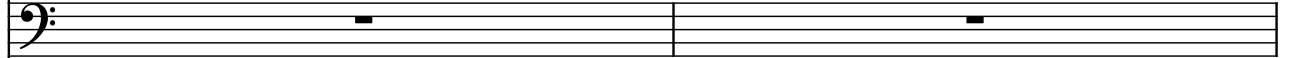


9

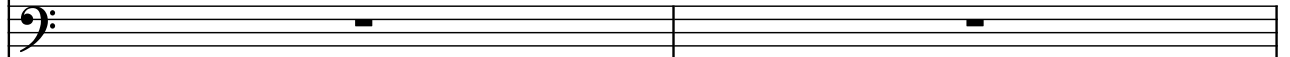
Synth.



Synth.

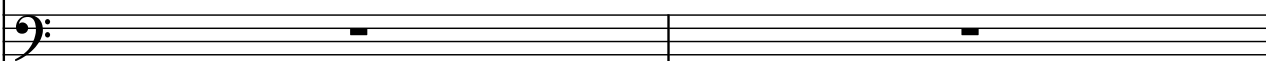


Synth.



11

Synth.  

Synth.  

Synth.  

Detailed description: This system contains three staves, each labeled 'Synth.' on the left. The top staff has a bass clef and contains two measures of music. The first measure has a dense sequence of eighth notes, mostly in the lower register. The second measure continues this pattern. The middle and bottom staves are empty, with only a single horizontal line visible in each, indicating they are not active in this section.

13

Synth.  

Synth.  

Synth.  

Detailed description: This system contains three staves, each labeled 'Synth.' on the left. The top staff has a bass clef and contains two measures of music. The first measure features a sequence of eighth notes with some accidentals (flats and sharps). The second measure continues with a similar pattern. The middle and bottom staves are empty, with only a single horizontal line visible in each.

15

Synth.  

Synth.  

Synth.  

Detailed description: This system contains three staves, each labeled 'Synth.' on the left. The top staff has a bass clef and contains two measures of music. The first measure has a sequence of eighth notes, including a flat. The second measure continues the pattern. The middle and bottom staves are empty, with only a single horizontal line visible in each.

17

Synth.  

Synth.  

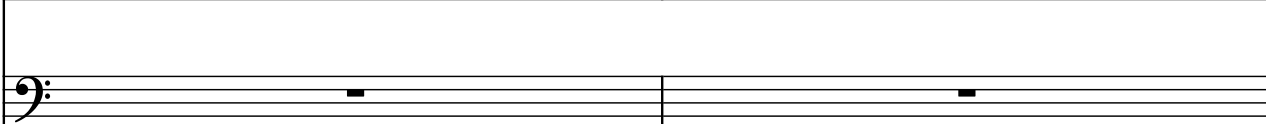
Synth.  

Detailed description: This system contains three staves, each labeled 'Synth.' on the left. The top staff has a bass clef and contains two measures of music. The first measure features a sequence of eighth notes with various accidentals. The second measure continues with a similar pattern. The middle and bottom staves are empty, with only a single horizontal line visible in each.

19

Synth. 

Synth. 

Synth. 

21

Synth. 

Synth. 

Synth. 

23

Synth. 

Synth. 

Synth. 

25

Synth. 

Synth. 

Synth. 

27

Synth.

Synth.

Synth.

29

Synth.

Synth.

Synth.

31

Synth.

Synth.

Synth.

33

Synth.

Synth.

Synth.

37

39


41

Three staves of music, each labeled 'Synth.' on the left. The top staff contains a complex melodic line with many beamed sixteenth and thirty-second notes, including accidentals. The middle and bottom staves are mostly empty, with a few rests and a single note in the middle track.

43

Synth. 

46

Synth. 

49

Synth. 

51

Synth. 

53

55

57

Synth.

Synth.

Synth.

59

Three staves of music, each labeled 'Synth.' on the left. The top staff contains a complex melody with many beamed notes, while the middle and bottom staves are mostly rests.



61

Synth.



Synth.




Synth.



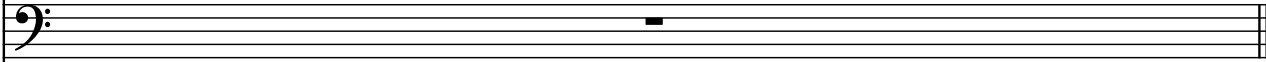
Measure 61: The top staff (Synth.) contains a complex melodic line with many beamed eighth and sixteenth notes, including accidentals (flats and sharps). The middle and bottom staves (Synth.) are empty, showing only the five-line structure.

63

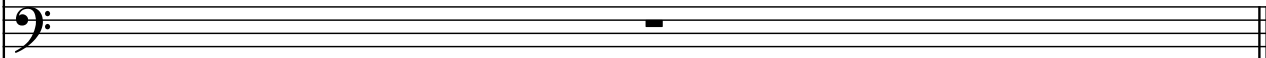
Synth.



Synth.



Synth.



Measure 63: The top staff (Synth.) contains a melodic line with beamed eighth and sixteenth notes and accidentals. The middle and bottom staves (Synth.) are empty, showing only the five-line structure.