

Gauntlet (Remix II)

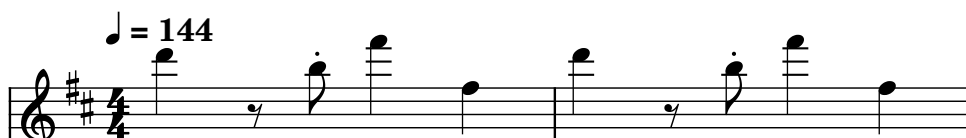
Composer: Koji Kondo

Game: Gauntlet

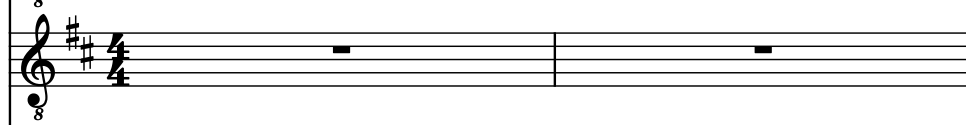
pianogame.org

♩ = 144

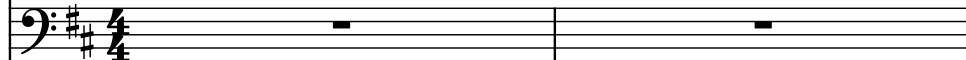
Electric Guitar, Electric Guitar



Electric Guitar, Electric Guitar



Bass Guitar, Electric Bass



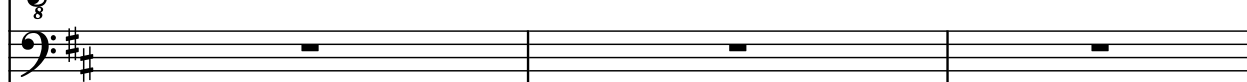
El. Guit.



El. Guit.



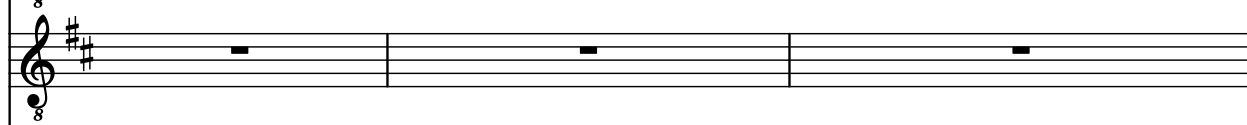
B. Guit.



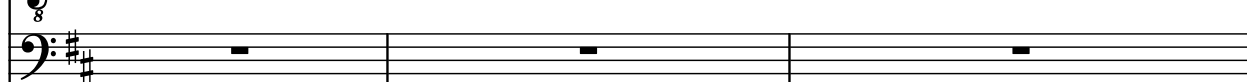
El. Guit.



El. Guit.



B. Guit.



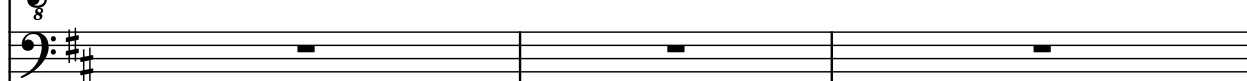
El. Guit.



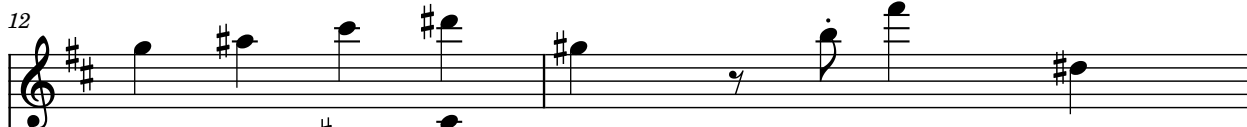
El. Guit.



B. Guit.



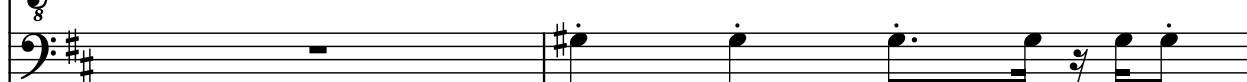
El. Guit.



El. Guit.



B. Guit.



14

El. Guit.

El. Guit.

B. Guit.

16

El. Guit.

El. Guit.

B. Guit.

18

El. Guit.

El. Guit.

B. Guit.

20

El. Guit.

El. Guit.

B. Guit.

22

El. Guit.

El. Guit.

B. Guit.

24

El. Guit.

El. Guit.

B. Guit.

27

El. Guit.

El. Guit.

B. Guit.

29

El. Guit.

El. Guit.

B. Guit.

32

El. Guit.

El. Guit.

B. Guit.

34

El. Guit.

El. Guit.

B. Guit.

37

El. Guit.

El. Guit.

B. Guit.

39

El. Guit.

El. Guit.

B. Guit.

41

El. Guit.

El. Guit.

B. Guit.

43

El. Guit.

El. Guit.

B. Guit.

44

El. Guit.

El. Guit.

B. Guit.

46

El. Guit.

El. Guit.

B. Guit.

48

El. Guit.

El. Guit.

B. Guit.

51

El. Guit.

El. Guit.

B. Guit.

53

El. Guit.

El. Guit.

B. Guit.

56

El. Guit.

El. Guit.

B. Guit.

58

El. Guit.

El. Guit.

B. Guit.

61

El. Guit.

El. Guit.

B. Guit.

63

El. Guit.

El. Guit.

B. Guit.

65

El. Guit.

El. Guit.

B. Guit.

67

El. Guit.

El. Guit.

B. Guit.

Measures 67-68 of a guitar score. The key signature is two sharps (F# and C#). The score is written for three parts: two Electric Guitars (El. Guit.) and one Bass Guitar (B. Guit.). Measures 67 and 68 are marked with a common time signature of 8. The notation includes various musical symbols such as notes, rests, and accidentals.

68

El. Guit.

El. Guit.

B. Guit.

Measures 68-69 of a guitar score. The key signature is two sharps (F# and C#). The score is written for three parts: two Electric Guitars (El. Guit.) and one Bass Guitar (B. Guit.). Measures 68 and 69 are marked with a common time signature of 8. The notation includes various musical symbols such as notes, rests, and accidentals.

70

El. Guit.

El. Guit.

B. Guit.

Measures 70-71 of a guitar score. The key signature is two sharps (F# and C#). The score is written for three parts: two Electric Guitars (El. Guit.) and one Bass Guitar (B. Guit.). Measures 70 and 71 are marked with a common time signature of 8. The notation includes various musical symbols such as notes, rests, and accidentals.

72

El. Guit.

El. Guit.

B. Guit.

Measures 72-73 of a guitar score. The key signature is two sharps (F# and C#). The score is written for three parts: two Electric Guitars (El. Guit.) and one Bass Guitar (B. Guit.). Measures 72 and 73 are marked with a common time signature of 8. The notation includes various musical symbols such as notes, rests, and accidentals.