

Soarin' Over The Space (v2.0)

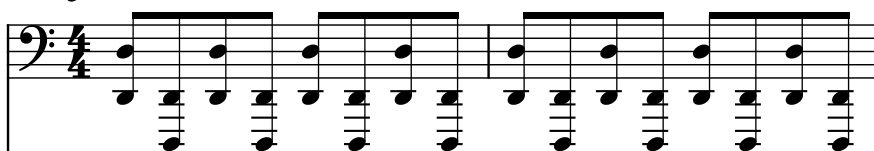
Composer: Jun Senoue

Game: Sonic Adventure 2

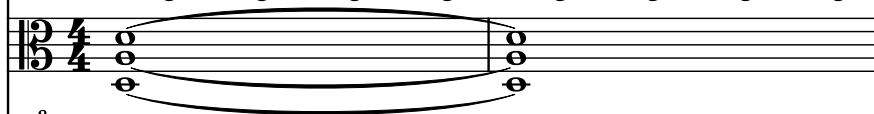
pianogame.org

♩ = 130

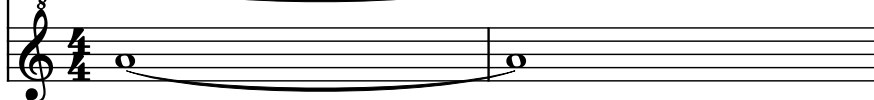
Mallet Synthesizer, SQUARE



Violas (section), STRING ENSEMBLE



Tin Whistle, Whistle

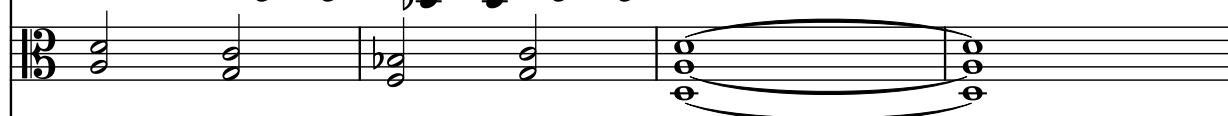


3

Mal. Syn.



Vlas.

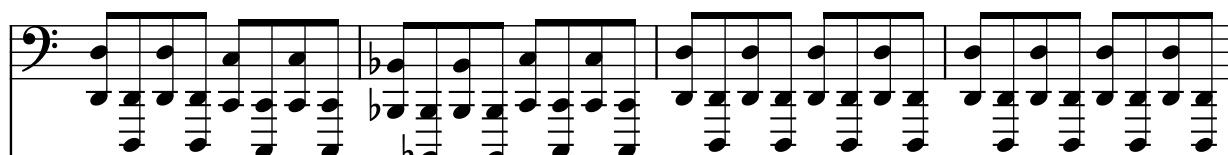


C Tin Wh.



7

Mal. Syn.



Vlas.



C Tin Wh.

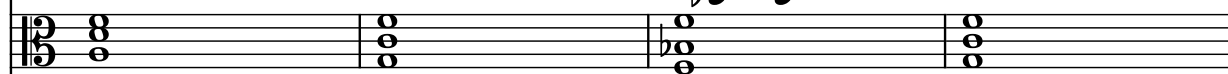


11

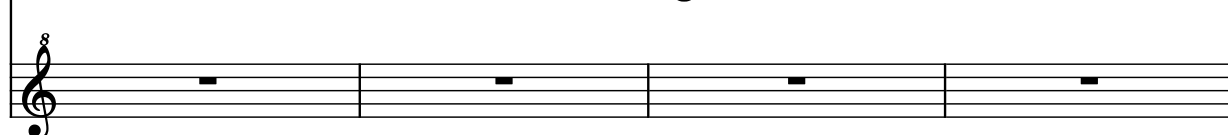
Mal. Syn.



Vlas.



C Tin Wh.



15

Mal. Syn.

Vlas.

C Tin Wh.

Measures 15-18: Mal. Syn. plays a continuous eighth-note pattern in the bass clef. Vlas. plays chords in the bass clef. C Tin Wh. is silent.

19

Mal. Syn.

Vlas.

C Tin Wh.

Measures 19-22: Mal. Syn. continues the eighth-note pattern. Vlas. plays chords, with a fermata at the end of measure 22. C Tin Wh. plays a single note in measure 19, then is silent.

23

Mal. Syn.

Vlas.

C Tin Wh.

Measures 23-26: Mal. Syn. continues the eighth-note pattern. Vlas. plays chords, with a fermata at the end of measure 26. C Tin Wh. plays a single note in measure 23, then is silent.

27

Mal. Syn.

Vlas.

C Tin Wh.

Measures 27-30: Mal. Syn. continues the eighth-note pattern. Vlas. plays chords. C Tin Wh. plays a single note in measure 27, then is silent.

31

Mal. Syn.

Vlas.

C Tin Wh.

Measures 31-34: Mal. Syn. (Bass) plays a continuous eighth-note melody. Vlas. (Bass) plays a sustained chord. C Tin Wh. (Treble) is silent.

35

Mal. Syn.

Vlas.

C Tin Wh.

Measures 35-38: Mal. Syn. (Bass) plays a continuous eighth-note melody. Vlas. (Bass) plays a sustained chord. C Tin Wh. (Treble) is silent.

39

Mal. Syn.

Vlas.

C Tin Wh.

Measures 39-42: Mal. Syn. (Bass) plays a continuous eighth-note melody. Vlas. (Bass) plays a sustained chord. C Tin Wh. (Treble) is silent.

43

Mal. Syn.

Vlas.

C Tin Wh.

Measures 43-46: Mal. Syn. (Bass) plays a continuous eighth-note melody. Vlas. (Bass) plays a sustained chord. C Tin Wh. (Treble) is silent.

47

Mal. Syn.

Vlas.

C Tin Wh.

Mal. Syn. (Bass) plays a continuous eighth-note pattern. Vlas. (Bass) plays a series of chords. C Tin Wh. (Treble) has whole rests.

51

Mal. Syn.

Vlas.

C Tin Wh.

Mal. Syn. (Bass) continues the eighth-note pattern. Vlas. (Bass) plays chords. C Tin Wh. (Treble) has whole rests in measures 51-53 and a half note in measure 54.

55

Mal. Syn.

Vlas.

C Tin Wh.

Mal. Syn. (Bass) continues the eighth-note pattern. Vlas. (Bass) plays chords, with a slur over measures 57-58. C Tin Wh. (Treble) has whole rests in measures 55-56 and a half note in measure 57, which is tied to measure 58.

59

Mal. Syn.

Vlas.

C Tin Wh.

Mal. Syn. (Bass) continues the eighth-note pattern. Vlas. (Bass) plays chords, with a slur over measures 61-62. C Tin Wh. (Treble) has whole rests in measures 59-60 and a half note in measure 61, which is tied to measure 62.

63

Mal. Syn.

Vlas.

C Tin Wh.

8

67

Mal. Syn.

Vlas.

C Tin Wh.

8

71

Mal. Syn.

Vlas.

C Tin Wh.

8

75

Mal. Syn.

Vlas.

C Tin Wh.

8

79

Mal. Syn.

Vlas.

C Tin Wh.

Measures 79-82. Mal. Syn. (Bass) plays a continuous eighth-note pattern. Vlas. (Bass) plays chords. C Tin Wh. (Treble) has rests.

83

Mal. Syn.

Vlas.

C Tin Wh.

Measures 83-86. Mal. Syn. (Bass) plays a continuous eighth-note pattern. Vlas. (Bass) plays chords. C Tin Wh. (Treble) has rests.

87

Mal. Syn.

Vlas.

C Tin Wh.

Measures 87-90. Mal. Syn. (Bass) plays a continuous eighth-note pattern. Vlas. (Bass) plays chords. C Tin Wh. (Treble) has rests.

91

Mal. Syn.

Vlas.

C Tin Wh.

Measures 91-94. Mal. Syn. (Bass) plays a continuous eighth-note pattern. Vlas. (Bass) plays chords. C Tin Wh. (Treble) has rests.

95

Mal. Syn.

Vlas.

C Tin Wh.

Mal. Syn. (Bass) plays a continuous eighth-note pattern. Vlas. (Bass) plays a sustained chord. C Tin Wh. (Treble) plays a sustained note.

99

Mal. Syn.

Vlas.

C Tin Wh.

Mal. Syn. (Bass) plays a continuous eighth-note pattern. Vlas. (Bass) plays a sustained chord. C Tin Wh. (Treble) plays a sustained note.

103

Mal. Syn.

Vlas.

C Tin Wh.

Mal. Syn. (Bass) plays a continuous eighth-note pattern. Vlas. (Bass) plays a sustained chord. C Tin Wh. (Treble) plays a sustained note.