

Music A (5)

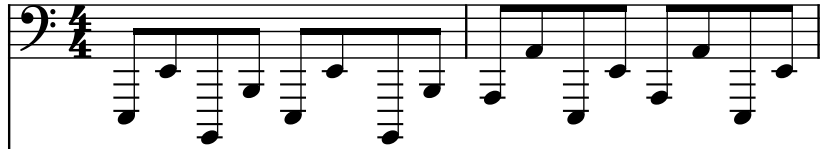
Composer: Hirokazu Tanaka

Game: Tetris

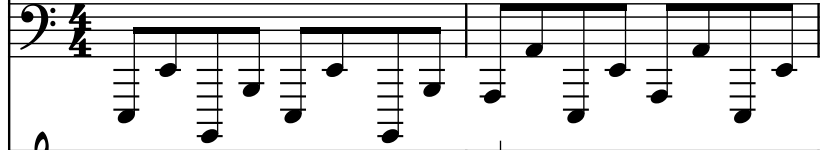
pianogame.org

♩ = 150

Bass Synthesizer, Synth Bass 2 (Left)



Bass Synthesizer, Synth Bass 2 (Right)



New Age Synthesizer, New Age Pad (Right)



3

Synth.



Synth.



Synth.



7

Synth.



Synth.



Synth.



11

Synth.



Synth.



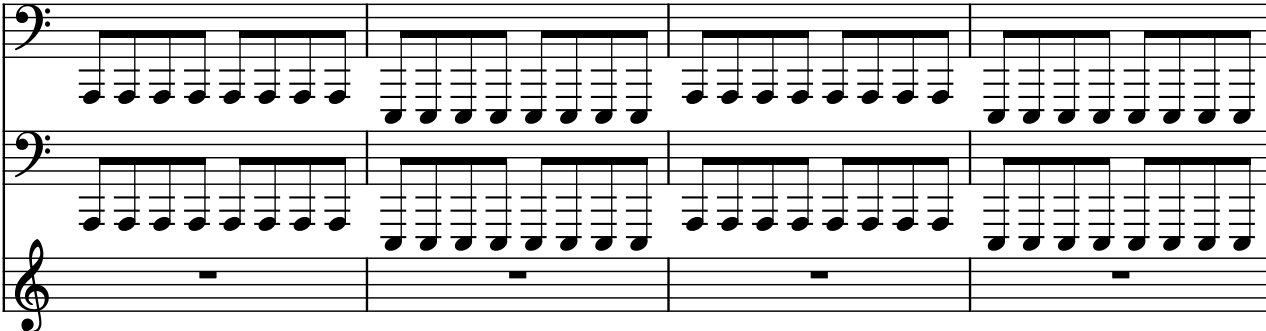
Synth.



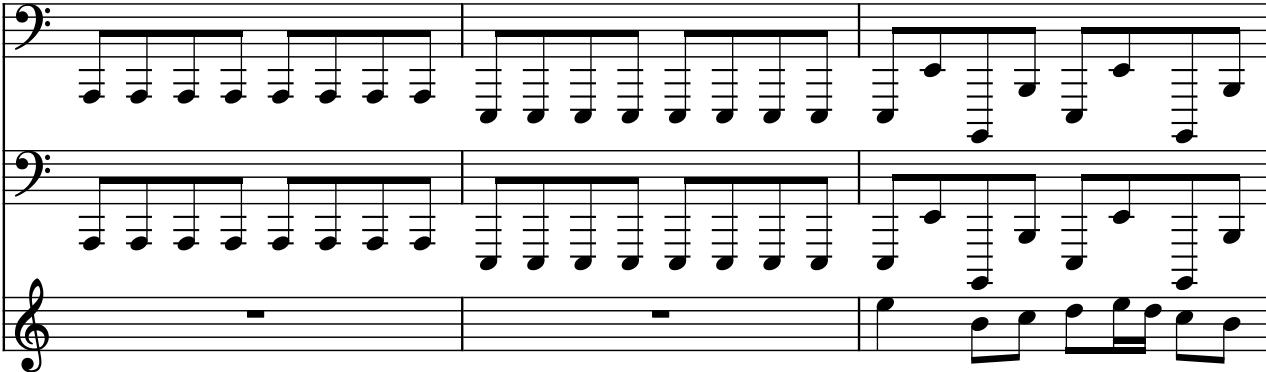
15

Synth. 

19

Synth. 

23

Synth. 

26

Synth. 

Synth. Synth. Synth.

34

Synth.

Synth.

Synth.

38

Synth.

Synth.

Synth.

42

Three staves of music, all labeled 'Synth.' on the left. The first two staves are in bass clef and play a continuous eighth-note pattern. The third staff is in treble clef and plays a sustained low note.

46

Synth.

Three staves of music. The top two staves are in bass clef and the bottom staff is in treble clef. All three staves are labeled 'Synth.'. Measures 46-48 show a continuous sequence of eighth notes in the bass staves, while the treble staff contains whole rests.

49

Synth.

Three staves of music. Measures 49-51 show a continuous sequence of eighth notes in the bass staves. In measure 51, the bass staves introduce a melodic line with accidentals (sharps and flats). The treble staff continues with eighth notes.

52

Synth.

Three staves of music. Measures 52-55 show a continuous sequence of eighth notes in the bass staves. In measure 55, the bass staves introduce a melodic line with accidentals. The treble staff continues with eighth notes.

56

Synth.

Three staves of music. Measures 56-58 show a continuous sequence of eighth notes in the bass staves. In measure 58, the bass staves introduce a melodic line with accidentals. The treble staff continues with eighth notes.