

# Grass Land: Stage 4

Composer: Jun Ishikawa

Game: Kirby's Dream Land 3

[pianogame.org](http://pianogame.org)

$\text{♩} = 170$

Crotales, Glockenspiel

Pan Flute, Pan Flute

Soprano Trombone, Trombone

Measures 1-5 of the musical score. The Crotales, Glockenspiel part has rests in measures 1-3 and a melodic line in measures 4-5. The Pan Flute part has rests in measures 1-3 and a melodic line in measures 4-5. The Soprano Trombone part has rests in measures 1-4 and a melodic line in measure 5.

6

Crot.

Pn. Fl.

S. Tbn.

Measures 6-11 of the musical score. The Crotales part has rests in measures 6-7 and a melodic line in measures 8-11. The Pan Flute part has rests in measures 6-7 and a melodic line in measures 8-11. The Soprano Trombone part has a melodic line in measures 6-7 and rests in measures 8-11.

12

Crot.

Pn. Fl.

S. Tbn.

Measures 12-20 of the musical score. The Crotales and Pan Flute parts have rests throughout. The Soprano Trombone part has rests in measures 12-19 and a melodic line in measure 20.

21

Crot.

Pn. Fl.

S. Tbn.

Measures 21-27 of the musical score. The Crotales and Pan Flute parts have rests throughout. The Soprano Trombone part has a melodic line in measures 21-22 and rests in measures 23-27.

28

Crot.

Pn. Fl.

S. Tbn.

Measures 28-34 of the musical score. The Crotales and Pan Flute parts have rests throughout. The Soprano Trombone part has rests in measures 28-33 and a melodic line in measure 34.

37

Crot.

Pn. Fl.

S. Tbn.

Measures 37-44. Crot. and Pn. Fl. are mostly silent, with some activity in measure 44. S. Tbn. has a melodic line in measures 37-38 and then rests.

45

Crot.

Pn. Fl.

S. Tbn.

Measures 45-49. Crot. and Pn. Fl. have active parts in measures 45-46 and 49. S. Tbn. has a melodic line in measures 45-48 and then rests.

50

Crot.

Pn. Fl.

S. Tbn.

Measures 50-59. All three parts (Crot., Pn. Fl., S. Tbn.) are silent throughout this system.

60

Crot.

Pn. Fl.

S. Tbn.

Measures 60-66. Crot. and Pn. Fl. are silent. S. Tbn. has a melodic line in measures 60-61 and then rests.

67

Crot.

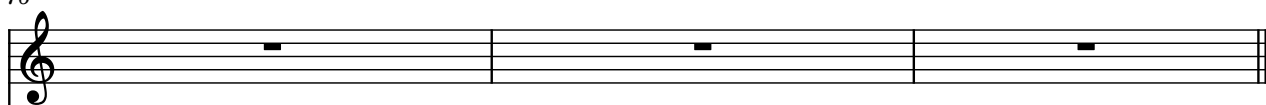
Pn. Fl.

S. Tbn.

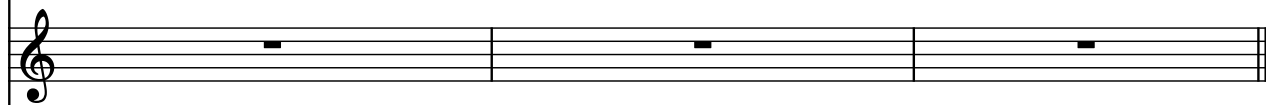
Measures 67-74. All three parts (Crot., Pn. Fl., S. Tbn.) are silent throughout this system.

76

Crot.



Pn. Fl.



S. Tbn.

