

Theme of Thief

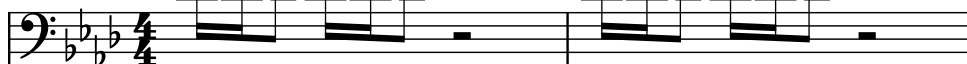
Composer: Naofumi Hataya

Game: Golden Axe

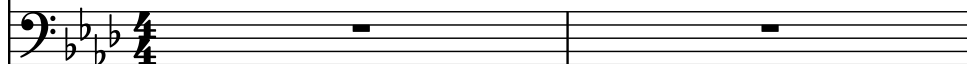
pianogame.org

♩ = 142

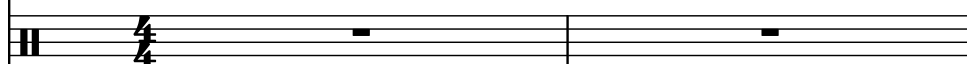
Contrabass, Staff-1



Fretless Electric Bass, Staff-2

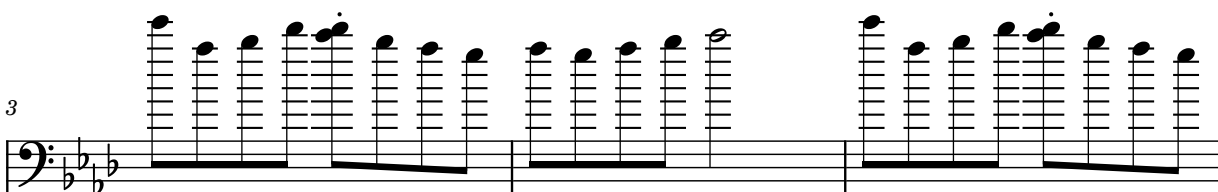


Percussion Synthesizer, Staff-3

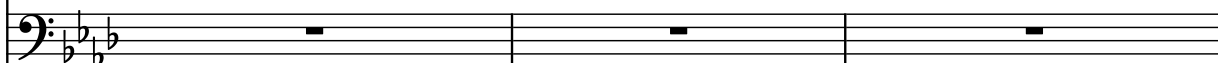


3

Cb.



Frtl. El. B.

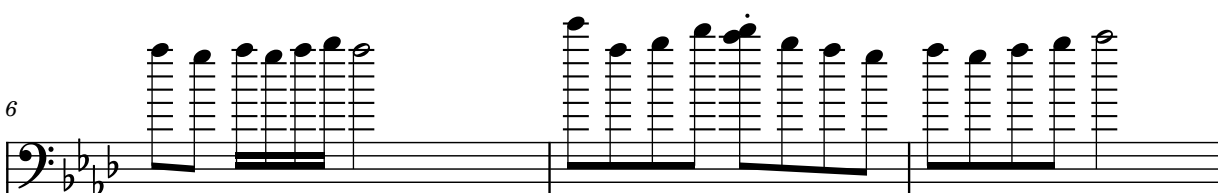


Perc. Syn.

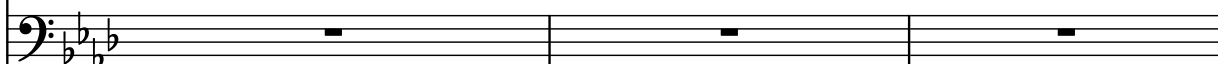


6

Cb.



Frtl. El. B.

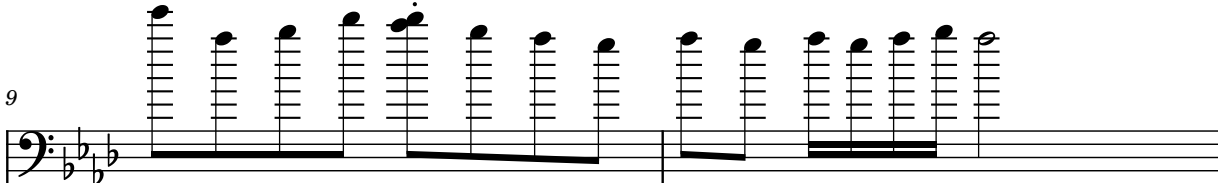


Perc. Syn.

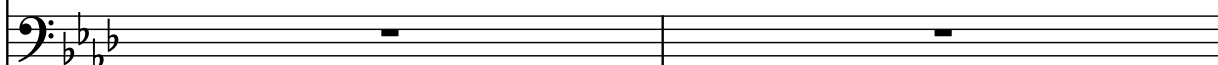


9

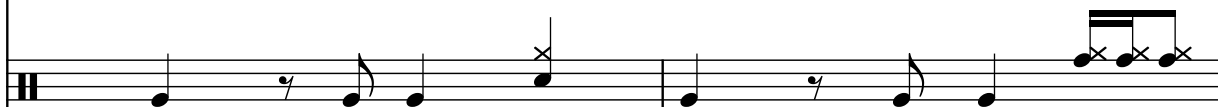
Cb.



Frtl. El. B.



Perc. Syn.



11

Cb.

Frtl. El. B.

Perc. Syn.

13

Cb.

Frtl. El. B.

Perc. Syn.

16

Cb.

Frtl. El. B.

Perc. Syn.

19

Cb.

Frtl. El. B.

Perc. Syn.

21

Cb.

Frtl. El. B.

Perc. Syn.

24

Cb.

Frtl. El. B.

Perc. Syn.

Measures 24-26. The Cb. part features a repeating eighth-note pattern with a dotted quarter note. The Frtl. El. B. part features a repeating eighth-note pattern with a dotted quarter note. The Perc. Syn. part features a repeating eighth-note pattern with a dotted quarter note.

27

Cb.

Frtl. El. B.

Perc. Syn.

Measures 27-29. The Cb. part features a complex, multi-measure rest followed by a series of eighth notes. The Frtl. El. B. part features a complex, multi-measure rest followed by a series of eighth notes. The Perc. Syn. part features a complex, multi-measure rest followed by a series of eighth notes.

30

Cb.

Frtl. El. B.

Perc. Syn.

Measures 30-32. The Cb. part features a complex, multi-measure rest followed by a series of eighth notes. The Frtl. El. B. part features a complex, multi-measure rest followed by a series of eighth notes. The Perc. Syn. part features a complex, multi-measure rest followed by a series of eighth notes.