

A Poisonous Snake

Composer: Hiroshi Kawaguchi

Game: V-V

pianogame.org

♩ = 119

9

17

22

27

32

38

43

48

54

60

65

69

73

78

84

91

This system contains measures 91 through 96. It features a complex texture with multiple staves. The upper staves have dense, rapid sixteenth-note passages, while the lower staves provide a more melodic and harmonic foundation. The key signature has one sharp (F#).

97

This system contains measures 97 through 104. The musical texture continues with intricate sixteenth-note patterns in the upper staves and supporting lines in the lower staves. The key signature remains one sharp (F#).

105

This system contains measures 105 through 113. The complexity of the sixteenth-note passages in the upper staves is maintained. The lower staves continue to provide harmonic support. The key signature is one sharp (F#).

114

This system contains measures 114 through 120. The musical notation shows a continuation of the dense sixteenth-note textures. The key signature is one sharp (F#).

121

This system contains measures 121 through 125. A triplet of eighth notes is indicated by a '3' over a bracket in measure 124. The system concludes with a double bar line and repeat signs. The key signature is one sharp (F#).

126

This system contains measures 126 through 132. It begins with a double bar line and repeat signs. The musical texture continues with sixteenth-note passages. The key signature is one sharp (F#).

131

System 131-136: This system contains six measures of music. The upper staff features a complex texture of many beamed sixteenth notes, while the lower staff has a more rhythmic accompaniment with eighth and sixteenth notes. A double bar line is present after the third measure.

137

System 137-141: This system contains five measures of music. It continues the musical texture from the previous system, with a double bar line after the third measure.

142

System 142-146: This system contains five measures of music. It continues the musical texture from the previous system, with a double bar line after the third measure.

[3]

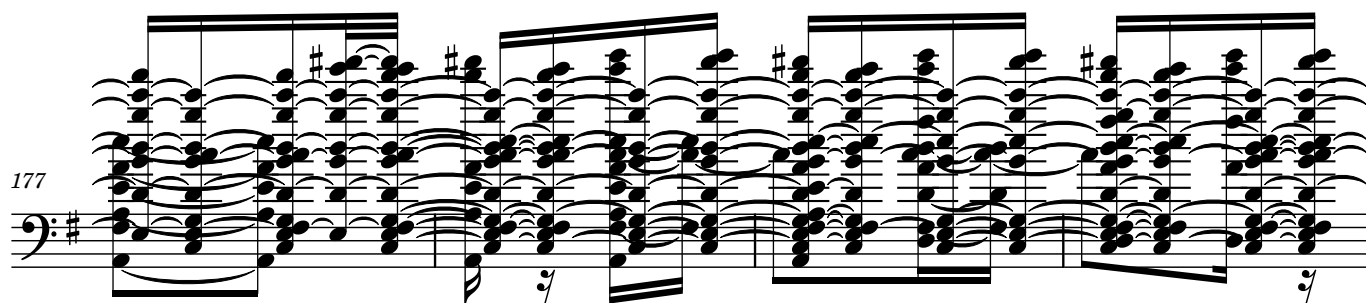
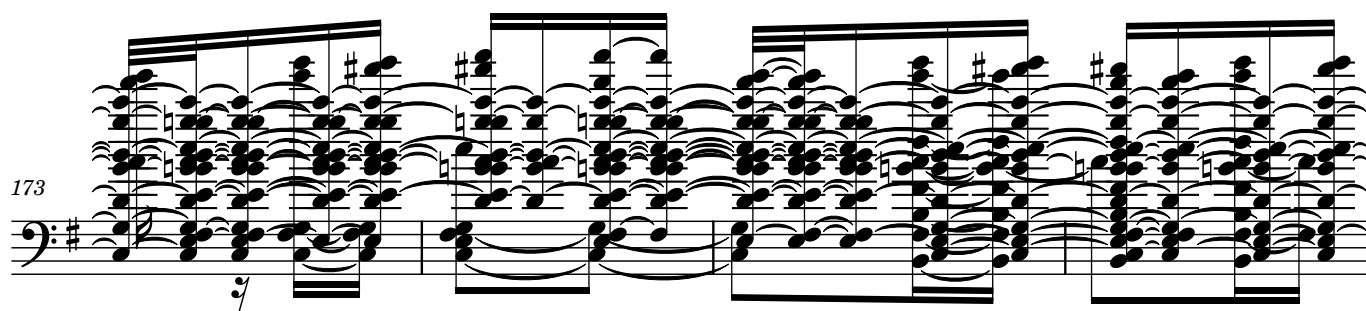
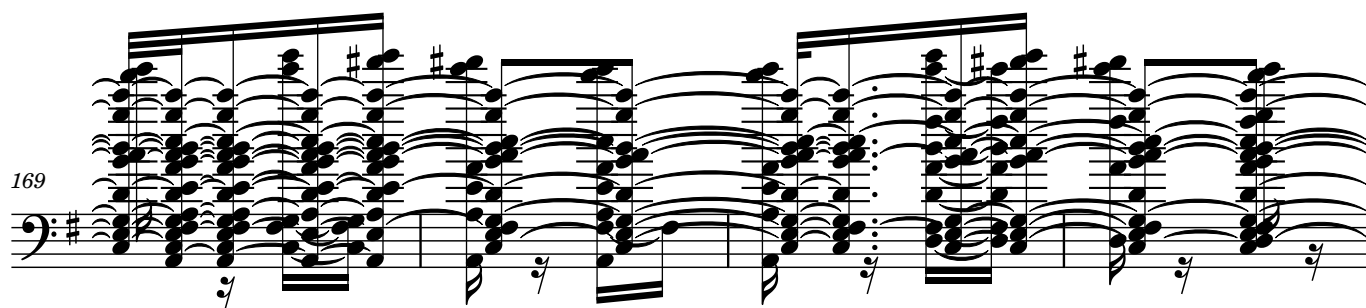
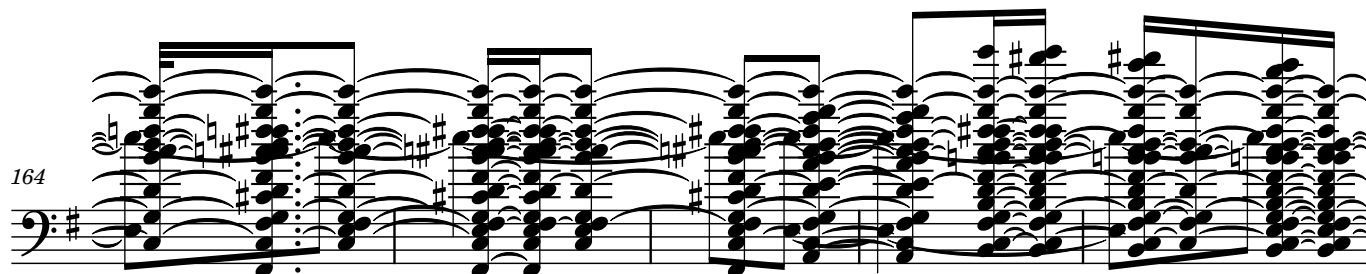
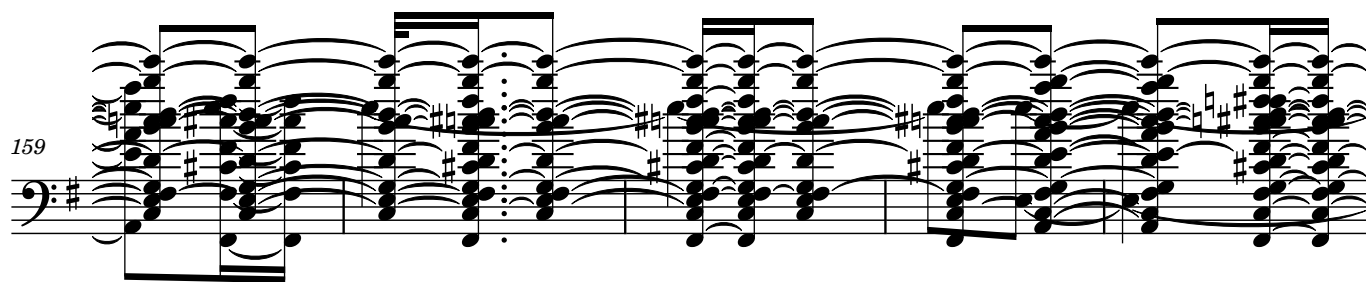
147

System 147-152: This system contains six measures of music. It continues the musical texture from the previous system, with a double bar line after the third measure.

[3]

153

System 153-158: This system contains six measures of music. It continues the musical texture from the previous system, with a double bar line after the third measure.



185

System 185-190: This system contains five measures of music. The notation is dense, featuring many beamed sixteenth and thirty-second notes, creating a rapid, rhythmic texture. The key signature has one sharp (F#).

190

System 190-194: This system contains four measures of music. It continues the dense, beamed-note texture from the previous system. The key signature remains one sharp (F#).

194

System 194-198: This system contains four measures of music. The notation is dense with beamed notes. The key signature changes to two sharps (F# and C#).

198

System 198-203: This system contains five measures of music. It features a continuation of the dense, beamed-note texture. The key signature is two sharps (F# and C#).

203

System 203-208: This system contains five measures of music. The notation is very dense, with many beamed notes and some accidentals. The key signature is two sharps (F# and C#).

207

Measures 207-210 of a musical score. The notation is in bass clef with a key signature of one sharp (F#). The music features dense, multi-measure rests and complex rhythmic patterns, including many beamed sixteenth and thirty-second notes. The upper staves are heavily cluttered with these notes, while the lower staves show more defined melodic lines.

210

Measures 211-214 of a musical score. The notation continues in bass clef with a key signature of one sharp. The complexity of the rhythmic patterns remains high, with frequent use of beamed notes and multi-measure rests. The overall texture is dense and intricate.

214

Measures 215-220 of a musical score. The notation is in bass clef with a key signature of one sharp. The music shows a continuation of the dense, rhythmic patterns seen in the previous measures, with complex groupings of notes and rests.

220

Measures 221-226 of a musical score. The notation is in bass clef with a key signature of one sharp. The music features dense, multi-measure rests and complex rhythmic patterns, including many beamed sixteenth and thirty-second notes. The upper staves are heavily cluttered with these notes, while the lower staves show more defined melodic lines.

226

Measures 227-231 of a musical score. The notation is in bass clef with a key signature of one sharp. The music shows a continuation of the dense, rhythmic patterns seen in the previous measures, with complex groupings of notes and rests.

231

Measures 232-236 of a musical score. The notation is in bass clef with a key signature of one sharp. The music features dense, multi-measure rests and complex rhythmic patterns, including many beamed sixteenth and thirty-second notes. The upper staves are heavily cluttered with these notes, while the lower staves show more defined melodic lines.

234

Measures 234-237 of a musical score. The notation is dense, featuring many beamed sixteenth and thirty-second notes. The key signature has two sharps (F# and C#). Measure 234 starts with a bass clef and a key signature change to two sharps. Measures 235-237 continue with complex rhythmic patterns. There are slurs over groups of notes in measures 235, 236, and 237. A '7' is written below measure 235.

238

Measures 238-240 of a musical score. The notation continues with dense, beamed notes. Measure 238 starts with a bass clef and a key signature change to two sharps. Measures 239-240 continue with complex rhythmic patterns. There are slurs over groups of notes in measures 239 and 240. A '7' is written below measure 238.

241

Measures 241-243 of a musical score. The notation continues with dense, beamed notes. Measure 241 starts with a bass clef and a key signature change to two sharps. Measures 242-243 continue with complex rhythmic patterns. There are slurs over groups of notes in measures 242 and 243. A '3' is written above measure 242, and a '5' is written below measure 241.

244

Measures 244-247 of a musical score. The notation continues with dense, beamed notes. Measure 244 starts with a bass clef and a key signature change to two sharps. Measures 245-247 continue with complex rhythmic patterns. There are slurs over groups of notes in measures 245, 246, and 247.

248

Measures 248-251 of a musical score. The notation continues with dense, beamed notes. Measure 248 starts with a bass clef and a key signature change to two sharps. Measures 249-251 continue with complex rhythmic patterns. There are slurs over groups of notes in measures 249, 250, and 251. A '7' is written below measure 248.

252

Measures 252-255 of a musical score. The notation is in bass clef with a key signature of one sharp (F#). The music features dense, multi-measure rests and complex rhythmic patterns, including triplets and sixteenth notes. The score is written on a single staff.

256

Measures 256-259 of a musical score. The notation is in bass clef with a key signature of one sharp (F#). The music features dense, multi-measure rests and complex rhythmic patterns, including triplets and sixteenth notes. The score is written on a single staff.

260

Measures 260-263 of a musical score. The notation is in bass clef with a key signature of one sharp (F#). The music features dense, multi-measure rests and complex rhythmic patterns, including triplets and sixteenth notes. The score is written on a single staff.

264

Measures 264-267 of a musical score. The notation is in bass clef with a key signature of one sharp (F#). The music features dense, multi-measure rests and complex rhythmic patterns, including triplets and sixteenth notes. The score is written on a single staff.

269

Measures 269-272 of a musical score. The notation is in bass clef with a key signature of one sharp (F#). The music features dense, multi-measure rests and complex rhythmic patterns, including triplets and sixteenth notes. The score is written on a single staff.

274

Measures 274-277 of a musical score. The notation is in bass clef with a key signature of one sharp (F#). The music features dense, multi-measure rests and complex rhythmic patterns, including many beamed sixteenth and thirty-second notes. The staff is filled with numerous accidentals (sharps and flats) and dynamic markings.

278

Measures 278-280 of a musical score. The notation continues with dense, multi-measure rests and complex rhythmic patterns, including many beamed sixteenth and thirty-second notes. The staff is filled with numerous accidentals (sharps and flats) and dynamic markings.

281

Measures 281-283 of a musical score. The notation continues with dense, multi-measure rests and complex rhythmic patterns, including many beamed sixteenth and thirty-second notes. The staff is filled with numerous accidentals (sharps and flats) and dynamic markings.

284

Measures 284-286 of a musical score. The notation continues with dense, multi-measure rests and complex rhythmic patterns, including many beamed sixteenth and thirty-second notes. The staff is filled with numerous accidentals (sharps and flats) and dynamic markings.

287

Measures 287-290 of a musical score. The notation continues with dense, multi-measure rests and complex rhythmic patterns, including many beamed sixteenth and thirty-second notes. The staff is filled with numerous accidentals (sharps and flats) and dynamic markings.

291

Measures 291-294 of a musical score. The notation continues with dense, multi-measure rests and complex rhythmic patterns, including many beamed sixteenth and thirty-second notes. The staff is filled with numerous accidentals (sharps and flats) and dynamic markings.

295

This system contains measures 295 through 300. It features a complex texture with multiple staves. The upper staves have a melodic line with dotted rhythms and slurs. The lower staves are filled with dense, rapid sixteenth-note passages. The key signature has one sharp (F#).

301

This system contains measures 301 through 306. The musical texture continues with dense sixteenth-note patterns in the lower staves and more melodic, slurred lines in the upper staves. The key signature remains one sharp (F#).

306

This system contains measures 306 through 311. The notation shows a continuation of the intricate sixteenth-note passages in the lower staves, with the upper staves providing a melodic counterpoint. The key signature is one sharp (F#).

311

This system contains measures 311 through 316. The dense rhythmic patterns in the lower staves are maintained, while the upper staves show some melodic variation with slurs. The key signature is one sharp (F#).

319

This system contains measures 319 through 324. The musical texture is consistent with the previous systems, featuring rapid sixteenth-note runs in the lower staves and melodic lines in the upper staves. The key signature is one sharp (F#).

327

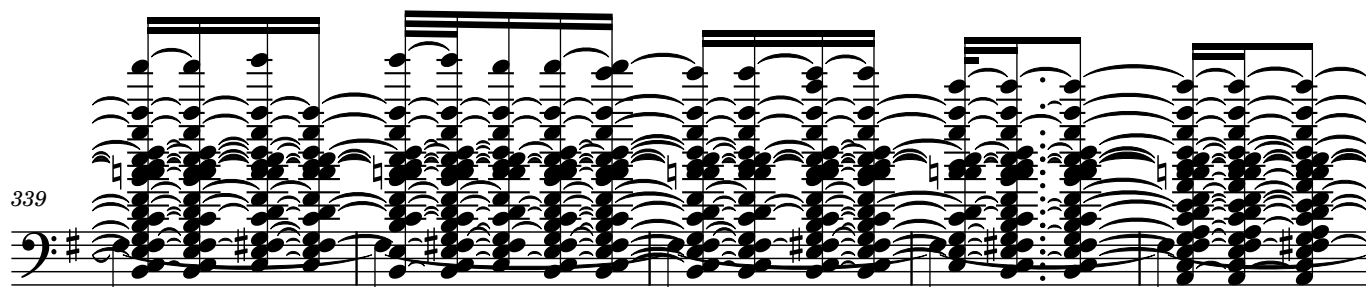
This system contains measures 327 through 332. The notation continues the complex interplay of dense rhythmic patterns and melodic slurs across the multiple staves. The key signature is one sharp (F#).

334



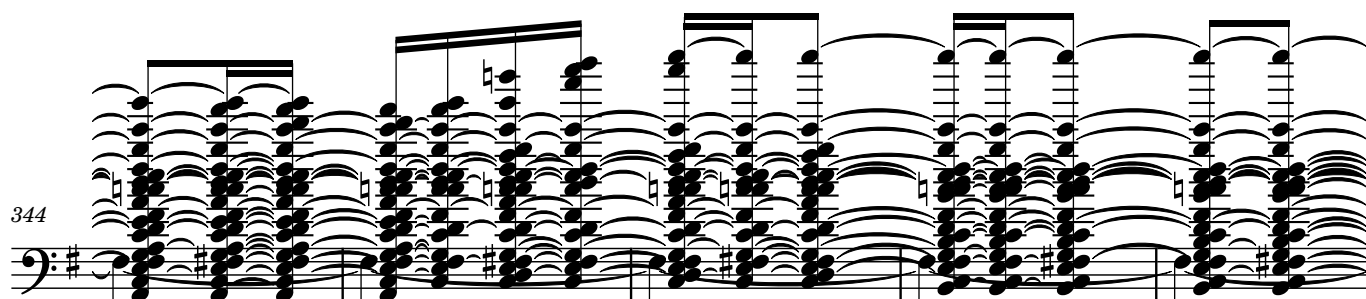
System 334: A musical score system in bass clef with a key signature of one sharp (F#). It contains 16 measures of music. The notation is dense, featuring many beamed sixteenth and thirty-second notes, creating a rapid, rhythmic texture. The melody is primarily in the upper register, while the bass line provides a steady, rhythmic foundation.

339



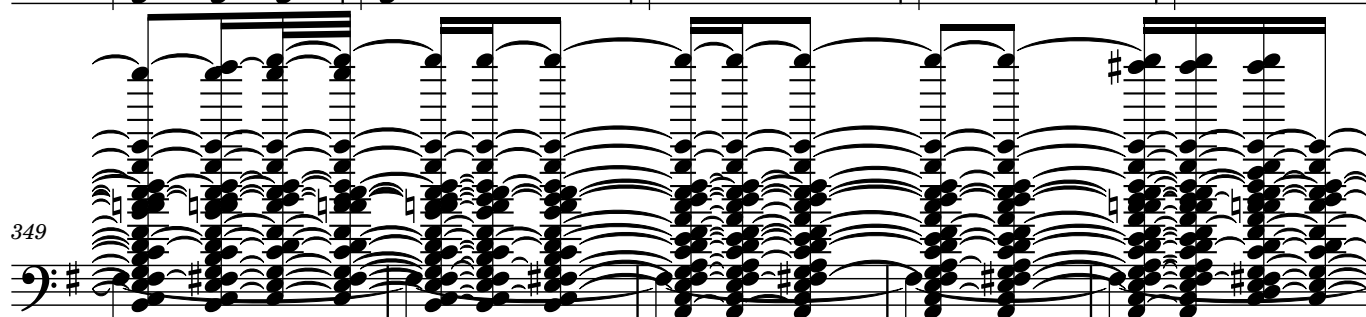
System 339: A musical score system in bass clef with a key signature of one sharp (F#). It contains 16 measures of music. The notation is dense, featuring many beamed sixteenth and thirty-second notes, creating a rapid, rhythmic texture. The melody is primarily in the upper register, while the bass line provides a steady, rhythmic foundation.

344



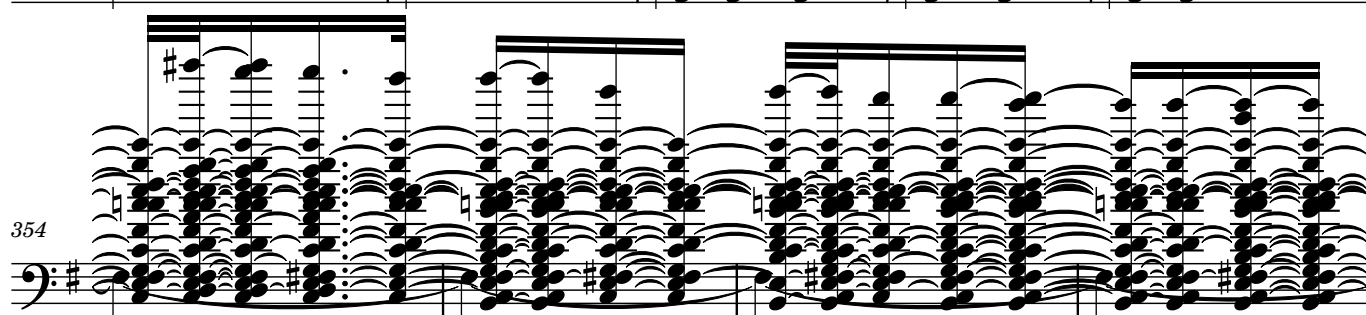
System 344: A musical score system in bass clef with a key signature of one sharp (F#). It contains 16 measures of music. The notation is dense, featuring many beamed sixteenth and thirty-second notes, creating a rapid, rhythmic texture. The melody is primarily in the upper register, while the bass line provides a steady, rhythmic foundation.

349



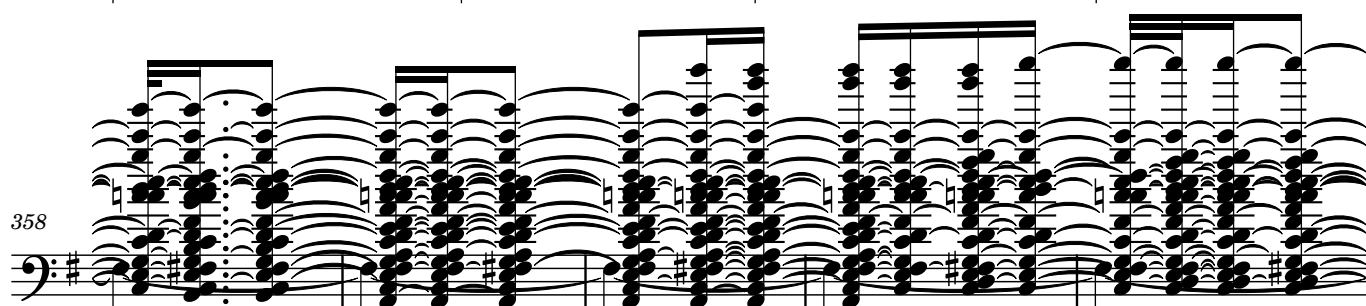
System 349: A musical score system in bass clef with a key signature of one sharp (F#). It contains 16 measures of music. The notation is dense, featuring many beamed sixteenth and thirty-second notes, creating a rapid, rhythmic texture. The melody is primarily in the upper register, while the bass line provides a steady, rhythmic foundation.

354



System 354: A musical score system in bass clef with a key signature of one sharp (F#). It contains 16 measures of music. The notation is dense, featuring many beamed sixteenth and thirty-second notes, creating a rapid, rhythmic texture. The melody is primarily in the upper register, while the bass line provides a steady, rhythmic foundation.

358



System 358: A musical score system in bass clef with a key signature of one sharp (F#). It contains 16 measures of music. The notation is dense, featuring many beamed sixteenth and thirty-second notes, creating a rapid, rhythmic texture. The melody is primarily in the upper register, while the bass line provides a steady, rhythmic foundation.

363

— 3 —

This system of music contains measures 363 through 374. It features a complex texture with multiple staves. The upper staves are filled with dense, overlapping melodic lines and many beamed sixteenth notes. The lower staves provide a harmonic foundation with chords and moving lines. A triplet bracket labeled '3' is positioned above the first staff of this system.

369

— 3 —

This system of music contains measures 375 through 386. It continues the dense musical texture from the previous system, with intricate melodic patterns and complex rhythmic figures across all staves. A triplet bracket labeled '3' is positioned above the first staff of this system.

375

This system of music contains measures 387 through 398. The musical complexity remains high, with dense melodic and harmonic textures. The notation includes many beamed notes and complex chordal structures.

380

This system of music contains measures 399 through 410. The texture is dense and intricate, with multiple layers of melodic and harmonic material. The notation is highly detailed, reflecting the complexity of the piece.

385

This system of music contains measures 411 through 422. The musical texture is dense and complex, with many beamed notes and intricate melodic lines. The notation is highly detailed, reflecting the complexity of the piece.

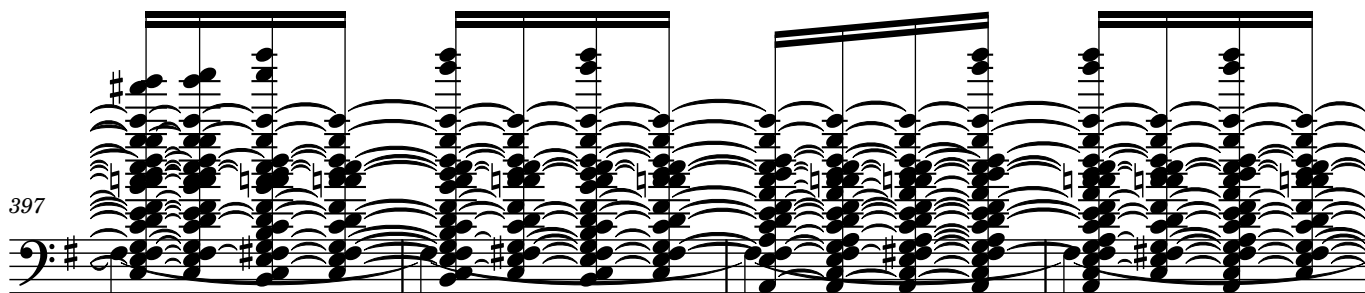
389

This system of music contains measures 423 through 434. The texture is dense and intricate, with multiple layers of melodic and harmonic material. The notation is highly detailed, reflecting the complexity of the piece.

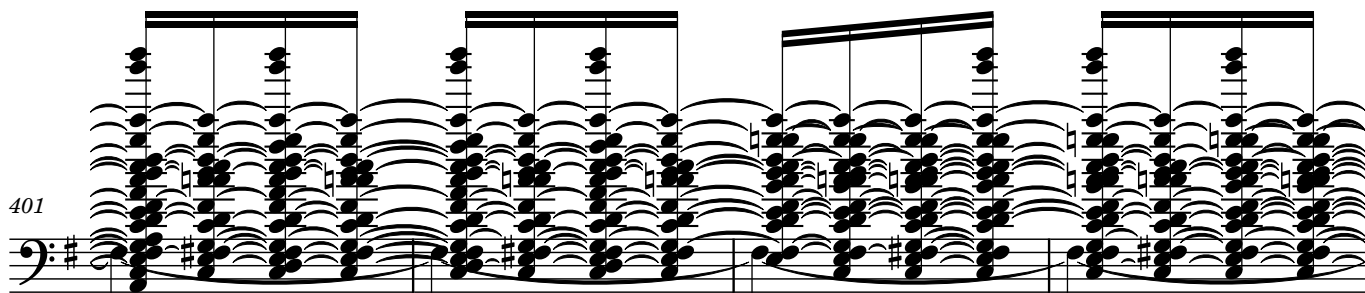
393



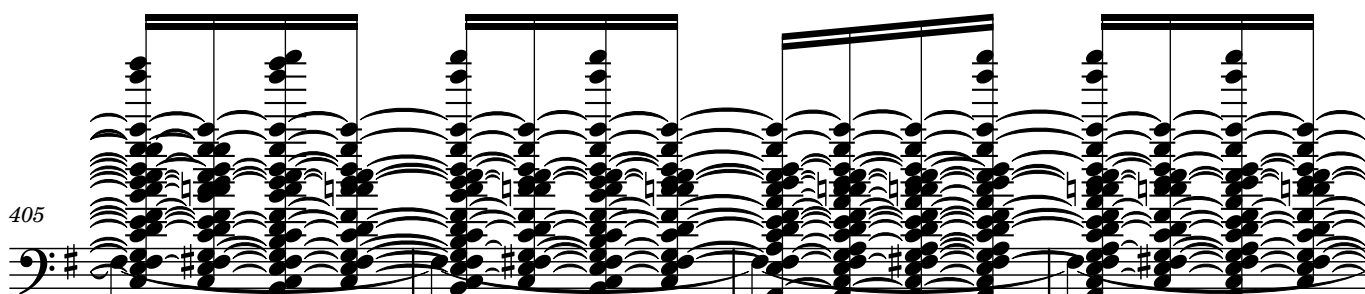
397



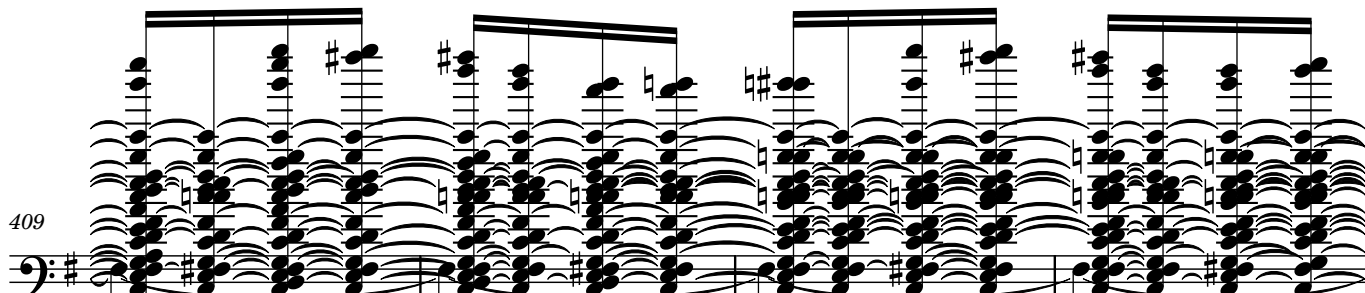
401



405



409



413



417

Measures 417-420 of a musical score. The notation is in bass clef with a key signature of one sharp (F#). The music features dense, multi-measure rests and complex rhythmic patterns, including sixteenth and thirty-second notes, with many accidentals (sharps and naturals).

421

Measures 421-423 of a musical score. The notation is in bass clef with a key signature of one sharp (F#). The music features dense, multi-measure rests and complex rhythmic patterns, including sixteenth and thirty-second notes, with many accidentals (sharps and naturals). A measure rest of 5 is indicated above measure 423.

424

Measures 424-428 of a musical score. The notation is in bass clef with a key signature of one sharp (F#). The music features dense, multi-measure rests and complex rhythmic patterns, including sixteenth and thirty-second notes, with many accidentals (sharps and naturals).

429

Measures 429-434 of a musical score. The notation is in bass clef with a key signature of one sharp (F#). The music features dense, multi-measure rests and complex rhythmic patterns, including sixteenth and thirty-second notes, with many accidentals (sharps and naturals).

435

Measures 435-440 of a musical score. The notation is in bass clef with a key signature of one sharp (F#). The music features dense, multi-measure rests and complex rhythmic patterns, including sixteenth and thirty-second notes, with many accidentals (sharps and naturals).

441

Measures 441-445 of a musical score. The notation is in bass clef with a key signature of one sharp (F#). The music features dense, multi-measure rests and complex rhythmic patterns, including sixteenth and thirty-second notes, with many accidentals (sharps and naturals).

446

3

450

5

454

5

458

461

464

467