

Fortune Teller - "Prime Blue" (4)

Composer: Masanori Hikichi

Game: Terranigma

pianogame.org

♩ = 110

Fretless Electric Bass, Channel 1

Vibraphone, Channel 2

Measures 1-4 of the first system. The Fretless Electric Bass (Channel 1) is in the bass clef, 4/4 time, key of B-flat major. It starts with a whole note B-flat, followed by a half note G-flat, a quarter note F, and a quarter note E. The Vibraphone (Channel 2) is in the treble clef, 4/4 time, key of B-flat major. It has whole rests in measures 1 and 2, then a triplet of eighth notes (F, E, D) in measure 3, and a quarter note C in measure 4.

5

Frtl. El. B.

Vib.

Measures 5-8 of the first system. The Fretless Electric Bass (Frtl. El. B.) continues the melody from measure 4. The Vibraphone (Vib.) has a whole note B-flat in measure 5, a half note G-flat in measure 6, and a quarter note F in measure 7. In measure 8, it has a triplet of eighth notes (F, E, D) and a quarter note C.

8

Frtl. El. B.

Vib.

Measures 9-12 of the first system. The Fretless Electric Bass (Frtl. El. B.) continues the melody. The Vibraphone (Vib.) has a whole note B-flat in measure 9, a half note G-flat in measure 10, and a quarter note F in measure 11. In measure 12, it has a triplet of eighth notes (F, E, D) and a quarter note C.

11

Frtl. El. B.

Vib.

Measures 13-16 of the first system. The Fretless Electric Bass (Frtl. El. B.) continues the melody. The Vibraphone (Vib.) has a whole note B-flat in measure 13, a half note G-flat in measure 14, and a quarter note F in measure 15. In measure 16, it has a triplet of eighth notes (F, E, D) and a quarter note C.

14

Frtl. El. B.

Vib.

3

19

Frtl. El. B.

Vib.

3 3

22

Frtl. El. B.

Vib.

3 3

25

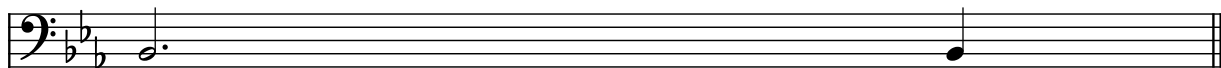
Frtl. El. B.

Vib.

3 3

28

Frtl. El. B.



Vib.

