

# Vivi in Alexandria

Composer: Nobuo Uematsu

Game: Final Fantasy 9

[pianogame.org](http://pianogame.org)

♩ = 180

7

12

17

22

27

32

2

37

37

43

43

48

48

53

53

59

59

66

66

73

A musical score for the song 'The Rose Tree'. The score is written for a piano, with a treble and bass staff. The key signature is one sharp (F#), and the time signature is 4/4. The melody is in the treble staff, consisting of a series of half notes: C4, D4, E4, F#4, G4, A4, B4, C5, D5, E5, F#5, G5, A5, B5, C6, D6, E6, F#6, G6, A6, B6, C7, D7, E7, F#7, G7, A7, B7, C8, D8, E8, F#8, G8, A8, B8, C9, D9, E9, F#9, G9, A9, B9, C10, D10, E10, F#10, G10, A10, B10, C11, D11, E11, F#11, G11, A11, B11, C12, D12, E12, F#12, G12, A12, B12, C13, D13, E13, F#13, G13, A13, B13, C14, D14, E14, F#14, G14, A14, B14, C15, D15, E15, F#15, G15, A15, B15, C16, D16, E16, F#16, G16, A16, B16, C17, D17, E17, F#17, G17, A17, B17, C18, D18, E18, F#18, G18, A18, B18, C19, D19, E19, F#19, G19, A19, B19, C20, D20, E20, F#20, G20, A20, B20, C21, D21, E21, F#21, G21, A21, B21, C22, D22, E22, F#22, G22, A22, B22, C23, D23, E23, F#23, G23, A23, B23, C24, D24, E24, F#24, G24, A24, B24, C25, D25, E25, F#25, G25, A25, B25, C26, D26, E26, F#26, G26, A26, B26, C27, D27, E27, F#27, G27, A27, B27, C28, D28, E28, F#28, G28, A28, B28, C29, D29, E29, F#29, G29, A29, B29, C30, D30, E30, F#30, G30, A30, B30, C31, D31, E31, F#31, G31, A31, B31, C32, D32, E32, F#32, G32, A32, B32, C33, D33, E33, F#33, G33, A33, B33, C34, D34, E34, F#34, G34, A34, B34, C35, D35, E35, F#35, G35, A35, B35, C36, D36, E36, F#36, G36, A36, B36, C37, D37, E37, F#37, G37, A37, B37, C38, D38, E38, F#38, G38, A38, B38, C39, D39, E39, F#39, G39, A39, B39, C40, D40, E40, F#40, G40, A40, B40, C41, D41, E41, F#41, G41, A41, B41, C42, D42, E42, F#42, G42, A42, B42, C43, D43, E43, F#43, G43, A43, B43, C44, D44, E44, F#44, G44, A44, B44, C45, D45, E45, F#45, G45, A45, B45, C46, D46, E46, F#46, G46, A46, B46, C47, D47, E47, F#47, G47, A47, B47, C48, D48, E48, F#48, G48, A48, B48, C49, D49, E49, F#49, G49, A49, B49, C50, D50, E50, F#50, G50, A50, B50, C51, D51, E51, F#51, G51, A51, B51, C52, D52, E52, F#52, G52, A52, B52, C53, D53, E53, F#53, G53, A53, B53, C54, D54, E54, F#54, G54, A54, B54, C55, D55, E55, F#55, G55, A55, B55, C56, D56, E56, F#56, G56, A56, B56, C57, D57, E57, F#57, G57, A57, B57, C58, D58, E58, F#58, G58, A58, B58, C59, D59, E59, F#59, G59, A59, B59, C60, D60, E60, F#60, G60, A60, B60, C61, D61, E61, F#61, G61, A61, B61, C62, D62, E62, F#62, G62, A62, B62, C63, D63, E63, F#63, G63, A63, B63, C64, D64, E64, F#64, G64, A64, B64, C65, D65, E65, F#65, G65, A65, B65, C66, D66, E66, F#66, G66, A66, B66, C67, D67, E67, F#67, G67, A67, B67, C68, D68, E68, F#68, G68, A68, B68, C69, D69, E69, F#69, G69, A69, B69, C70, D70, E70, F#70, G70, A70, B70, C71, D71, E71, F#71, G71, A71, B71, C72, D72, E72, F#72, G72, A72, B72, C73, D73, E73, F#73, G73, A73, B73, C74, D74, E74, F#74, G74, A74, B74, C75, D75, E75, F#75, G75, A75, B75, C76, D76, E76, F#76, G76, A76, B76, C77, D77, E77, F#77, G77, A77, B77, C78, D78, E78, F#78, G78, A78, B78, C79, D79, E79, F#79, G79, A79, B79, C80, D80, E80, F#80, G80, A80, B80, C81, D81, E81, F#81, G81, A81, B81, C82, D82, E82, F#82, G82, A82, B82, C83, D83, E83, F#83, G83, A83, B83, C84, D84, E84, F#84, G84, A84, B84, C85, D85, E85, F#85, G85, A85, B85, C86, D86, E86, F#86, G86, A86, B86, C87, D87, E87, F#87, G87, A87, B87, C88, D88, E88, F#88, G88, A88, B88, C89, D89, E89, F#89, G89, A89, B89, C90, D90, E90, F#90, G90, A90, B90, C91, D91, E91, F#91, G91, A91, B91, C92, D92, E92, F#92, G92, A92, B92, C93, D93, E93, F#93, G93, A93, B93, C94, D94, E94, F#94, G94, A94, B94, C95, D95, E95, F#95, G95, A95, B95, C96, D96, E96, F#96, G96, A96, B96, C97, D97, E97, F#97, G97, A97, B97, C98, D98, E98, F#98, G98, A98, B98, C99, D99, E99, F#99, G99, A99, B99, C100, D100, E100, F#100, G100, A100, B100, C101, D101, E101, F#101, G101, A101, B101, C102, D102, E102, F#102, G102, A102, B102, C103, D103, E103, F#103, G103, A103, B103, C104, D104, E104, F#104, G104, A104, B104, C105, D105, E105, F#105, G105, A105, B105, C106, D106, E106, F#106, G106, A106, B106, C107, D107, E107, F#107, G107, A107, B107, C108, D108, E108, F#108, G108, A108, B108, C109, D109, E109, F#109, G109, A109, B109, C110, D110, E110, F#110, G110, A110, B110, C111, D111, E111, F#111, G111, A111, B111, C112, D112, E112, F#112, G112, A112, B112, C113, D113, E113, F#113, G113, A113, B113, C114, D114, E114, F#114, G114, A114, B114, C115, D115, E115, F#115, G115, A115, B115, C116, D116, E116, F#116, G116, A116, B116, C117, D117, E117, F#117, G117, A117, B117, C118, D118, E118, F#118, G118, A118, B118, C119, D119, E119, F#119, G119, A119, B119, C120, D120, E120, F#120, G120, A120, B120, C121, D121, E121, F#121, G121, A121, B121, C122, D122, E122, F#122, G122, A122, B122, C123, D123, E123, F#123, G123, A123, B123, C124, D124, E124, F#124, G124, A124, B124, C125, D125, E125, F#125, G125, A125, B125, C126, D126, E126, F#126, G126, A126, B126, C127, D127, E127, F#127, G127, A127, B127, C128, D128, E128, F#128, G128, A128, B128, C129, D129, E129, F#129, G129, A129, B129, C130, D130, E130, F#130, G130, A130, B130, C131, D131, E131, F#131, G131, A131, B131, C132, D132, E132, F#132, G132, A132, B132, C133, D133, E133, F#133, G133, A133, B133, C134, D134, E134, F#134, G134, A134, B134, C135, D135, E135,

79

A musical score for the song 'The Rose Tree'. The score is written for a piano, with a treble and bass staff. The key signature is one sharp (F#), and the time signature is 4/4. The melody is in the treble staff, consisting of six measures of whole notes, each with a different note (D4, E4, F#4, G4, A4, B4). The bass staff provides a harmonic accompaniment, starting with a series of chords and then moving to a more rhythmic pattern of eighth and sixteenth notes. The score is labeled 'The Rose Tree' and 'J. S. G. 1850'.

85

53

Handwritten musical score for 'The Rose Tree'. The score is written on two staves, Treble and Bass clef, with a key signature of one sharp (F#). The melody is written in the Treble clef, consisting of a series of half notes: G4, A4, B4, C5, B4, A4, G4. The bass line is written in the Bass clef, consisting of a series of quarter notes: G3, A3, B3, C4, B3, A3, G3. The piece is marked 'Allegretto' and 'Moderato'.

92

32

Musical score for 'The Rose Tree'. The score is written for piano (p) and features a treble and bass staff. The key signature is one sharp (F#). The melody is in the treble staff, consisting of a series of whole notes. The bass staff provides a harmonic accompaniment with chords and moving lines. The score is divided into measures by bar lines.

99

A musical score for the song 'The Rose Tree'. The score is written for a piano, with a treble and bass staff. The key signature is one sharp (F#), and the time signature is 4/4. The melody is in the treble staff, featuring a series of half notes and quarter notes, with a final measure containing a triplet of eighth notes. The bass staff provides a harmonic accompaniment, primarily using chords of eighth and sixteenth notes. The score is divided into two systems, with a repeat sign at the beginning of the second system.

106

106

The musical score for measures 106-110 of 'The Swan' by Camille Saint-Saëns is written for piano. The key signature is one sharp (F#), and the time signature is 3/4. The score is presented in a single system with a repeat sign at the end of measure 110. The right hand (treble clef) plays a melody, and the left hand (bass clef) provides a harmonic accompaniment. The melody is marked with a 'p' (piano) dynamic. The score is presented in a single system with a repeat sign at the end of measure 110.

111

A musical score for the song 'The Rose Tree'. The score is written for a piano, with a treble and bass staff. The key signature is one sharp (F#), and the time signature is 4/4. The melody is in the treble staff, and the accompaniment is in the bass staff. The melody consists of a series of eighth and quarter notes, with some rests. The accompaniment consists of a steady eighth-note pattern in the left hand and a series of chords and single notes in the right hand. The score is divided into six measures, each containing a measure of the melody and a measure of the accompaniment. The first measure of the melody is a quarter rest, followed by a quarter note G4, a quarter note A4, and a quarter note B4. The second measure of the melody is a quarter rest, followed by a quarter note G4, a quarter note A4, and a quarter note B4. The third measure of the melody is a quarter rest, followed by a quarter note G4, a quarter note A4, and a quarter note B4. The fourth measure of the melody is a quarter rest, followed by a quarter note G4, a quarter note A4, and a quarter note B4. The fifth measure of the melody is a quarter rest, followed by a quarter note G4, a quarter note A4, and a quarter note B4. The sixth measure of the melody is a quarter rest, followed by a quarter note G4, a quarter note A4, and a quarter note B4. The accompaniment in the bass staff consists of a steady eighth-note pattern in the left hand and a series of chords and single notes in the right hand. The first measure of the accompaniment is a quarter rest, followed by a quarter note G4, a quarter note A4, and a quarter note B4. The second measure of the accompaniment is a quarter rest, followed by a quarter note G4, a quarter note A4, and a quarter note B4. The third measure of the accompaniment is a quarter rest, followed by a quarter note G4, a quarter note A4, and a quarter note B4. The fourth measure of the accompaniment is a quarter rest, followed by a quarter note G4, a quarter note A4, and a quarter note B4. The fifth measure of the accompaniment is a quarter rest, followed by a quarter note G4, a quarter note A4, and a quarter note B4. The sixth measure of the accompaniment is a quarter rest, followed by a quarter note G4, a quarter note A4, and a quarter note B4.

117

System 117-122: Treble and bass staves. Treble staff has a key signature of one sharp (F#) and a common time signature. It contains six measures of music with various chords and melodic lines. Bass staff has a key signature of one sharp (F#) and contains six measures of music, mostly chords. Above the treble staff, there are six measures of a separate musical line, possibly for a second instrument, with a key signature of one flat (Bb) and a common time signature.

123

System 123-127: Treble and bass staves. Treble staff has a key signature of one sharp (F#) and contains five measures of music. Bass staff has a key signature of one sharp (F#) and contains five measures of music, mostly chords. Above the treble staff, there are five measures of a separate musical line, possibly for a second instrument, with a key signature of one flat (Bb) and a common time signature.

128

System 128-132: Treble and bass staves. Treble staff has a key signature of one sharp (F#) and contains five measures of music. Bass staff has a key signature of one sharp (F#) and contains five measures of music, mostly chords. Above the treble staff, there are five measures of a separate musical line, possibly for a second instrument, with a key signature of one flat (Bb) and a common time signature.

133

System 133-138: Treble and bass staves. Treble staff has a key signature of one sharp (F#) and contains six measures of music. Bass staff has a key signature of one sharp (F#) and contains six measures of music, mostly chords. Above the treble staff, there are six measures of a separate musical line, possibly for a second instrument, with a key signature of one flat (Bb) and a common time signature.

139

System 139-144: Treble and bass staves. Treble staff has a key signature of one sharp (F#) and contains six measures of music. Bass staff has a key signature of one sharp (F#) and contains six measures of music, mostly chords. Above the treble staff, there are six measures of a separate musical line, possibly for a second instrument, with a key signature of one flat (Bb) and a common time signature.

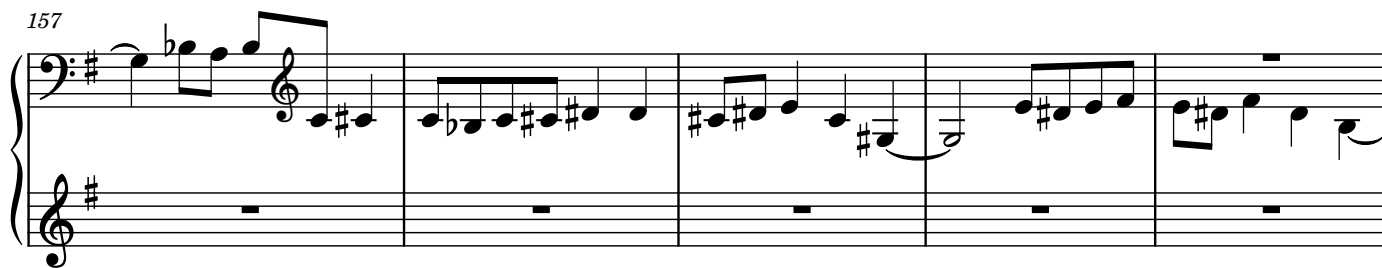
145

System 145-151: Treble and bass staves. Treble staff has a key signature of one sharp (F#) and contains seven measures of music. Bass staff has a key signature of one sharp (F#) and contains seven measures of music, mostly chords. Above the treble staff, there are seven measures of a separate musical line, possibly for a second instrument, with a key signature of one flat (Bb) and a common time signature.

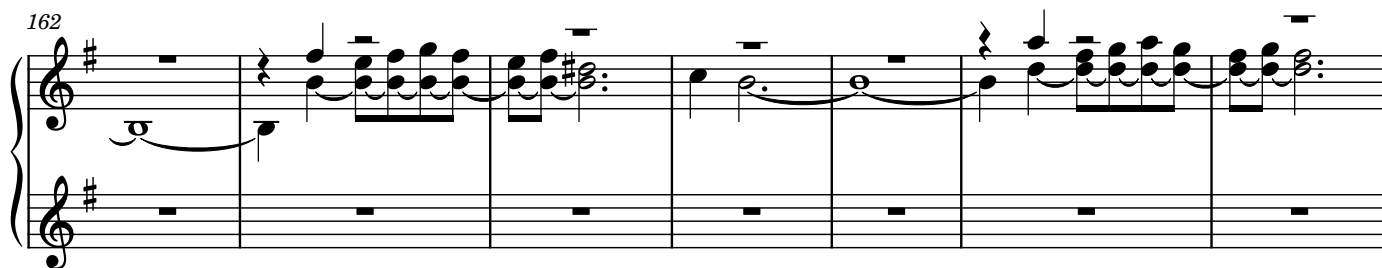
152

System 152-156: Treble and bass staves. Treble staff has a key signature of one sharp (F#) and contains five measures of music. Bass staff has a key signature of one sharp (F#) and contains five measures of music, mostly chords. Above the treble staff, there are five measures of a separate musical line, possibly for a second instrument, with a key signature of one flat (Bb) and a common time signature.

157



162



169

