

Sewer Stage

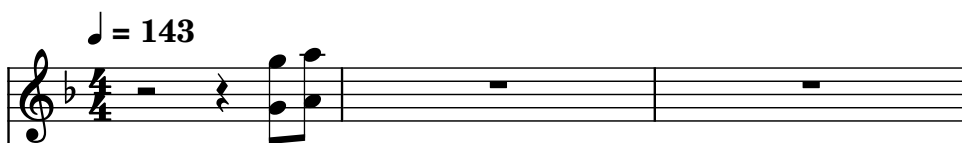
Composer: Mutsuhiko Izumi

Game: Teenage Mutant Ninja Turtles

pianogame.org

♩ = 143

Brass Synthesizer, Sampler



Bass Synthesizer, Electric Bass

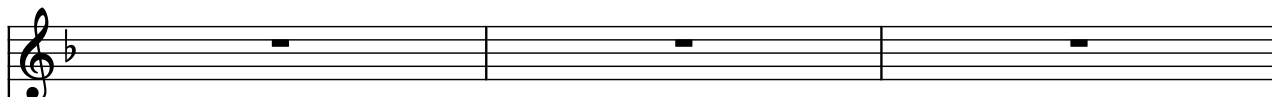


Contrabass, Acoustic Bass



4

Synth.



Synth.



Cb.



7

Synth.



Synth.



Cb.



10

Synth.



Synth.

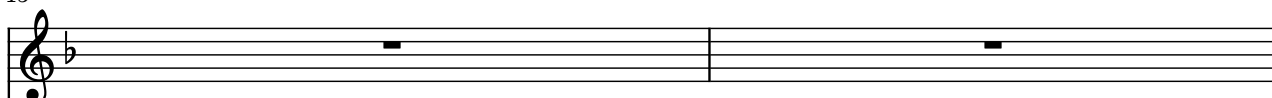


Cb.



13

Synth.



Synth.



Cb.



15

Synth.

Synth.

Cb.

This system contains measures 15 and 16. The top staff (Synth.) has a whole rest in measure 15 and a complex chordal melody in measure 16. The middle and bottom staves (Synth. and Cb.) play a rhythmic pattern of eighth notes with various accidentals.

17

Synth.

Synth.

Cb.

This system contains measures 17 and 18. The top staff (Synth.) has whole rests in both measures. The middle and bottom staves (Synth. and Cb.) continue the rhythmic eighth-note pattern.

19

Synth.

Synth.

Cb.

This system contains measures 19, 20, and 21. The top staff (Synth.) has a complex chordal melody in measures 19 and 20, followed by a whole rest in measure 21. The middle and bottom staves (Synth. and Cb.) continue the rhythmic eighth-note pattern.

22

Synth.

Synth.

Cb.

This system contains measures 22, 23, and 24. The top staff (Synth.) has a whole rest in measure 22, followed by a complex chordal melody in measure 23, and a whole rest in measure 24. The middle and bottom staves (Synth. and Cb.) continue the rhythmic eighth-note pattern.

25

Synth.

Synth.

Cb.

This system contains measures 25 and 26. The top staff (Synth.) has a complex chordal melody in measure 25 and a whole rest in measure 26. The middle and bottom staves (Synth. and Cb.) continue the rhythmic eighth-note pattern.

27

Synth.

Synth.

Cb.

30

Synth.

Synth.

Cb.

33

Synth.

Synth.

Cb.

36

Synth.

Synth.

Cb.

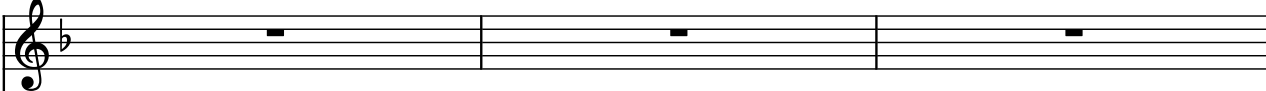


39



Synth.


Synth.

Cb.

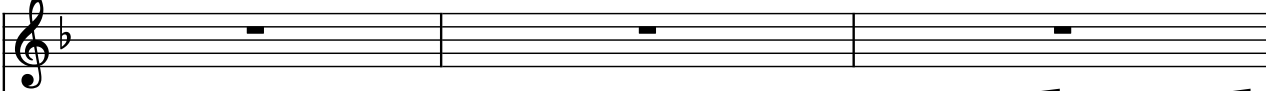


42



Synth.   


Synth.  

Cb. 

45

Synth.   

Synth.  

Cb. 

48

Synth.   

Synth.  

Cb. 

50

Synth.   

Synth.  

Cb. 

52

Synth.   

Synth.  

Cb. 

55

Synth.

Synth.

Cb.

58

Synth.

Synth.

Cb.

60

Synth.

Synth.

Cb.

63

Synth.

Synth.

Cb.

66

Synth.

Synth.

Cb.