

Starlight Zone (8)

Composer: Masato Nakamura

Game: Sonic the Hedgehog

pianogame.org

♩ = 140

Electric Piano, Sequenced by BlueFoxVerse and MaliceX

Bass Synthesizer, (C) 2002 BFVMX Midi's/Team Chaos

Tuned Klaxon Horns, (C) 1991-2003 SEGA Enterprises pty, ltd.

Electric Piano (4/4): Two staves, both containing whole rests for the first two measures.

Bass Synthesizer (4/4): One staff, containing whole rests for the first two measures.

Tuned Klaxon Horns (4/4): One staff, containing whole rests for the first two measures, followed by a melodic sequence in the third measure: a quarter rest, a quarter note G, a quarter note F, a quarter note E, and a quarter note D.

3

El. Pno. (4/4): Treble and bass staves. Treble staff has a triplet of eighth notes (F, G, A) in measure 3, followed by a quarter note B, a quarter note A, and a quarter note G. Bass staff has a triplet of eighth notes (B, A, G) in measure 3, followed by a quarter note F, a quarter note E, and a quarter note D.

Synth. (4/4): Bass staff. Treble staff has a triplet of eighth notes (F, G, A) in measure 3, followed by a quarter note B, a quarter note A, and a quarter note G. Bass staff has a triplet of eighth notes (B, A, G) in measure 3, followed by a quarter note F, a quarter note E, and a quarter note D.

Tn. Klx. Hns. (4/4): Treble staff. Treble staff has a quarter rest in measure 3, followed by a quarter note G, a quarter note F, a quarter note E, and a quarter note D. Bass staff has a quarter rest in measure 3, followed by a quarter note G, a quarter note F, a quarter note E, and a quarter note D.

6

El. Pno. (4/4): Treble and bass staves. Treble staff has a triplet of eighth notes (F, G, A) in measure 6, followed by a quarter note B, a quarter note A, and a quarter note G. Bass staff has a triplet of eighth notes (B, A, G) in measure 6, followed by a quarter note F, a quarter note E, and a quarter note D.

Synth. (4/4): Bass staff. Treble staff has a triplet of eighth notes (F, G, A) in measure 6, followed by a quarter note B, a quarter note A, and a quarter note G. Bass staff has a triplet of eighth notes (B, A, G) in measure 6, followed by a quarter note F, a quarter note E, and a quarter note D.

Tn. Klx. Hns. (4/4): Treble staff. Treble staff has a quarter rest in measure 6, followed by a quarter note G, a quarter note F, a quarter note E, and a quarter note D. Bass staff has a quarter rest in measure 6, followed by a quarter note G, a quarter note F, a quarter note E, and a quarter note D.

9

El. Pno.

Synth.

Tn. Klx. Hns.

12

El. Pno.

Synth.

Tn. Klx. Hns.

15

El. Pno.

Synth.

Tn. Klx. Hns.

18

El. Pno.

Synth.

Tn. Klx. Hns.

Measure 18: El. Pno. has a treble clef with a dotted quarter note, an eighth rest, a quarter note, an eighth rest, and a dotted quarter note. Synth. has a bass clef with a dotted quarter note, an eighth rest, a quarter note, an eighth rest, and a dotted quarter note. Tn. Klx. Hns. has a treble clef with a whole rest.

Measure 19: El. Pno. has a whole rest. Synth. has a whole rest. Tn. Klx. Hns. has a whole rest.

Measure 20: El. Pno. has a whole rest. Synth. has a whole rest. Tn. Klx. Hns. has a whole rest.

21

El. Pno.

Synth.

Tn. Klx. Hns.

Measure 21: El. Pno. has a whole rest. Synth. has a bass clef with a dotted quarter note, an eighth rest, a quarter note, an eighth rest, and a dotted quarter note. Tn. Klx. Hns. has a treble clef with a whole rest.

Measure 22: El. Pno. has a whole rest. Synth. has a whole rest. Tn. Klx. Hns. has a whole rest.

Measure 23: El. Pno. has a whole rest. Synth. has a whole rest. Tn. Klx. Hns. has a whole rest.

24

El. Pno.

Synth.

Tn. Klx. Hns.

Measure 24: El. Pno. has a whole rest. Synth. has a bass clef with a dotted quarter note, an eighth rest, a quarter note, an eighth rest, and a dotted quarter note. Tn. Klx. Hns. has a treble clef with a whole rest.

Measure 25: El. Pno. has a whole rest. Synth. has a whole rest. Tn. Klx. Hns. has a whole rest.

Measure 26: El. Pno. has a whole rest. Synth. has a whole rest. Tn. Klx. Hns. has a whole rest.

27

El. Pno.

Synth.

Tn. Klx. Hns.

30

El. Pno.

Synth.

Tn. Klx. Hns.

33

El. Pno.

Synth.

Tn. Klx. Hns.

36

El. Pno.

Synth.

Tn. Klx. Hns.

39

El. Pno.

Synth.

Tn. Klx. Hns.

42

El. Pno.

Synth.

Tn. Klx. Hns.

45

El. Pno.

Synth.

Tn. Klx. Hns.

Measures 45-47: El. Pno. (rests), Synth. (continuous eighth-note pattern with triplets), Tn. Klx. Hns. (rests).

48

El. Pno.

Synth.

Tn. Klx. Hns.

Measures 48-50: El. Pno. (rests), Synth. (continuous eighth-note pattern with triplets), Tn. Klx. Hns. (rests).

51

El. Pno.

Synth.

Tn. Klx. Hns.

Measures 51-53: El. Pno. (eighth-note patterns with triplets), Synth. (continuous eighth-note pattern with triplets), Tn. Klx. Hns. (half-note pattern with triplets).

54

El. Pno.

Synth.

Tn. Klx. Hns.

55

56

57

El. Pno.

Synth.

Tn. Klx. Hns.

58

59

60

El. Pno.

Synth.

Tn. Klx. Hns.

61

62

63

El. Pno.

Synth.

Tn. Klx. Hns.

Measures 63-65: El. Pno. and Synth. play a rhythmic pattern of eighth and sixteenth notes with grace notes. Tn. Klx. Hns. plays a melodic line.

66

El. Pno.

Synth.

Tn. Klx. Hns.

Measures 66-68: El. Pno. and Synth. continue their rhythmic patterns. Tn. Klx. Hns. is silent.

69

El. Pno.

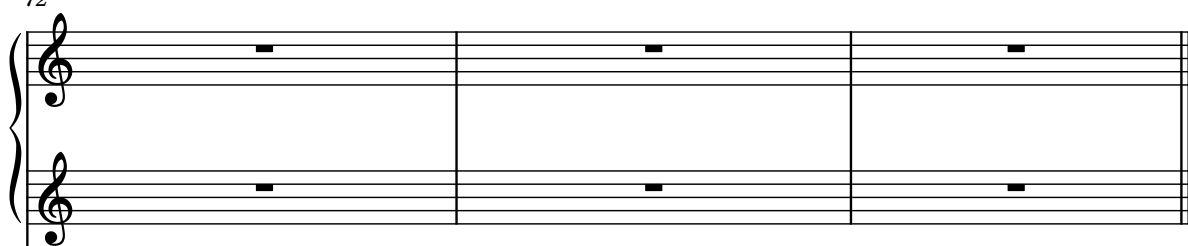
Synth.

Tn. Klx. Hns.

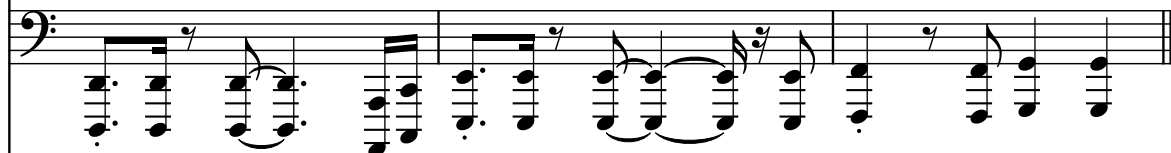
Measures 69-71: El. Pno. is silent. Synth. continues its rhythmic pattern. Tn. Klx. Hns. is silent.

72

El. Pno.



Synth.



Tn. Klx. Hns.

