

Slide Show (Part 2) (2)

Composer: Nobuo Uematsu

Game: Final Fantasy 8

pianogame.org

$\text{♩} = 120$

3

5

7

9

11

13

15

Measures 15 and 16 of a musical score. The key signature is three sharps (F#, C#, G#). Measure 15 features a complex texture with multiple accidentals and a fermata. Measure 16 continues the complex texture with various accidentals and a fermata.

17

Measures 17 and 18 of a musical score. The key signature is three sharps (F#, C#, G#). Measure 17 features a complex texture with multiple accidentals and a fermata. Measure 18 continues the complex texture with various accidentals and a fermata.

19

Measures 19, 20, and 21 of a musical score. The key signature is three sharps (F#, C#, G#). Measure 19 features a complex texture with multiple accidentals and a fermata. Measure 20 continues the complex texture with various accidentals and a fermata. Measure 21 features a complex texture with multiple accidentals and a fermata.

22

Measures 22 and 23 of a musical score. The key signature is three sharps (F#, C#, G#). Measure 22 features a complex texture with multiple accidentals and a fermata. Measure 23 continues the complex texture with various accidentals and a fermata.

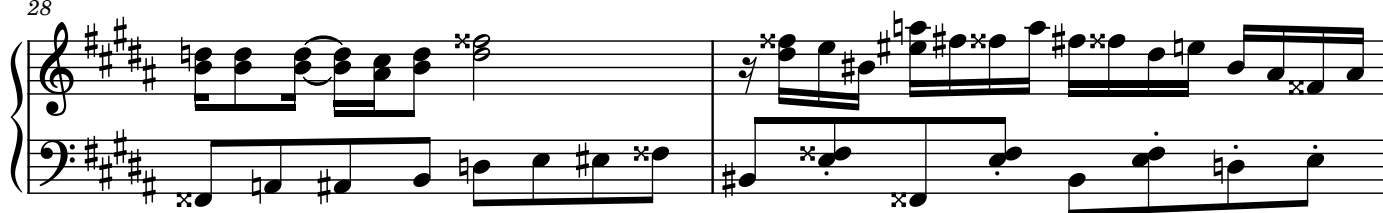
24

Measures 24 and 25 of a musical score. The key signature is three sharps (F#, C#, G#). Measure 24 features a complex texture with multiple accidentals and a fermata. Measure 25 continues the complex texture with various accidentals and a fermata.

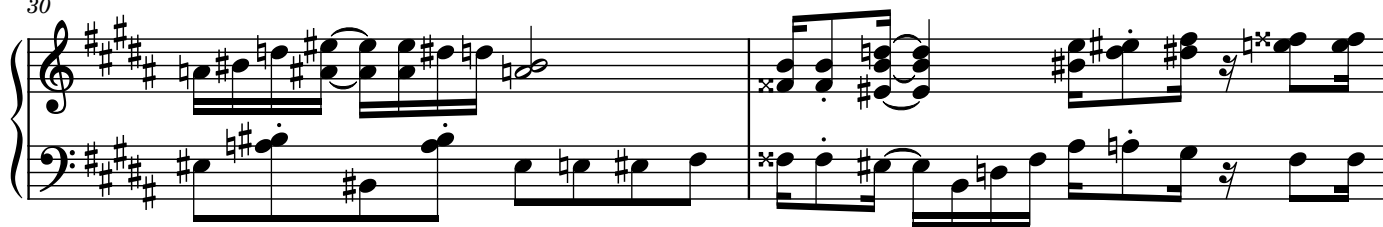
26

Measures 26 and 27 of a musical score. The key signature is three sharps (F#, C#, G#). Measure 26 features a complex texture with multiple accidentals and a fermata. Measure 27 continues the complex texture with various accidentals and a fermata.

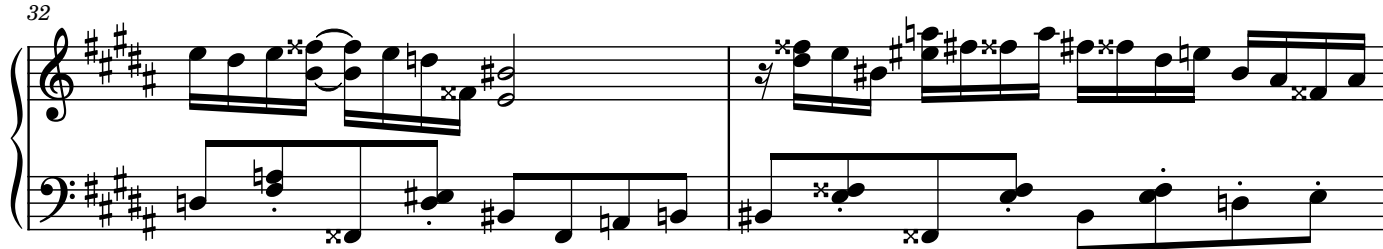
28



30



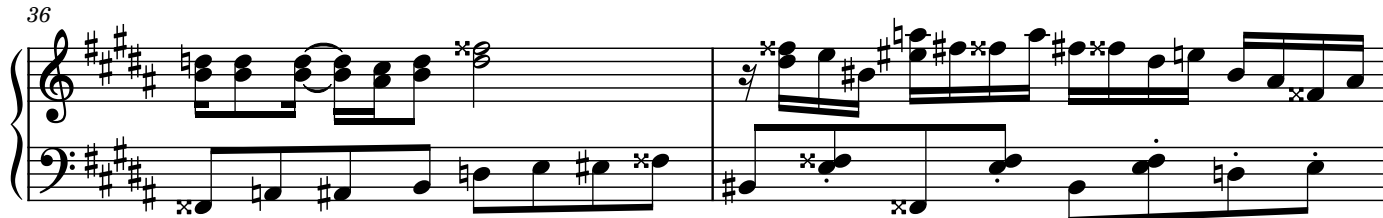
32



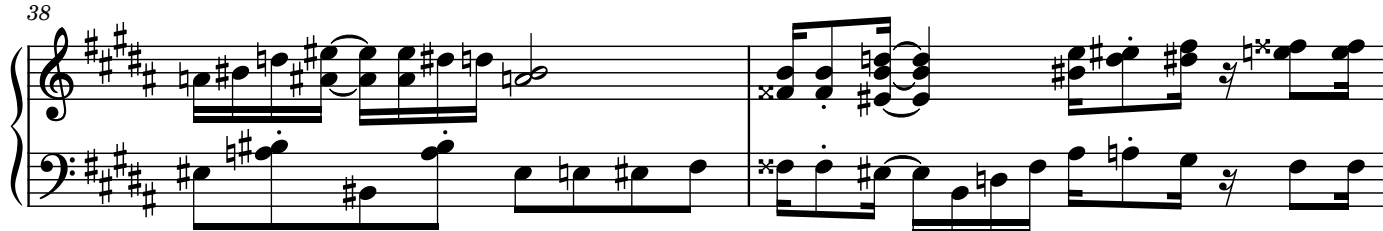
34



36



38



40



42

Measures 42-44 of a musical score in E major (three sharps). The system consists of two staves. The right staff features a melodic line with eighth-note patterns and rests. The left staff provides a harmonic accompaniment with chords and moving lines, including some notes marked with an 'x'.

45

Measures 45-47 of the musical score. The right staff continues the melodic development with eighth-note runs. The left staff maintains the accompaniment with sustained chords and moving bass lines.

48

Measures 48-50 of the musical score. The right staff shows more complex melodic figures with some accidentals. The left staff continues the accompaniment, with some notes marked with an 'x'.

50

Measures 50-52 of the musical score. The right staff features melodic lines with various accidentals. The left staff continues the accompaniment with chords and moving lines.

52

Measures 52-54 of the musical score. The right staff concludes with sustained chords and a final chord marked with an 'x'. The left staff provides a concluding accompaniment line. The system ends with a double bar line.