

# Theme Of Hyuga - "Tiger's Edge"

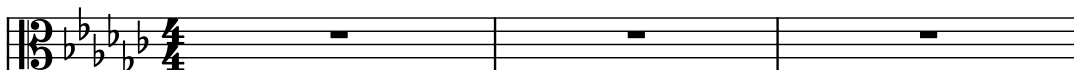
Composer: Keiji Yamagishi

Game: Captain Tsubasa Volume 1 (Japan)

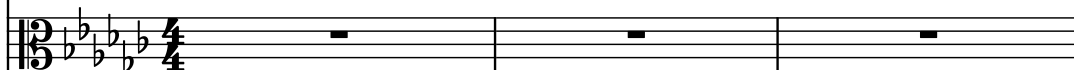
[pianogame.org](http://pianogame.org)

♩ = 175

Viola, Melody



Viola, Melody Echo

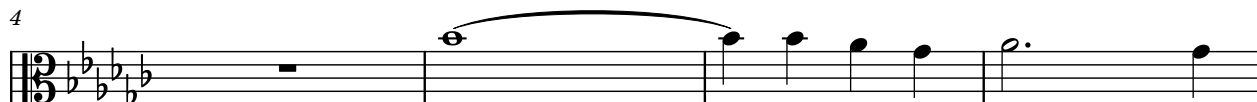


Bass Guitar, Tsu Bass

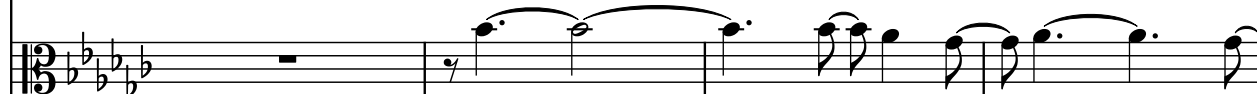


4

Vla.



Vla.

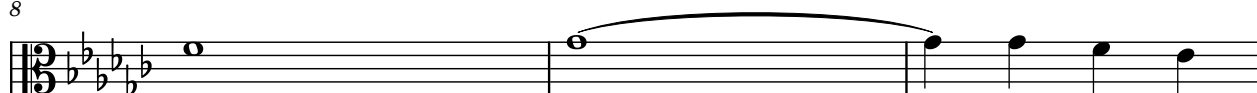


B. Guit.



8

Vla.



Vla.

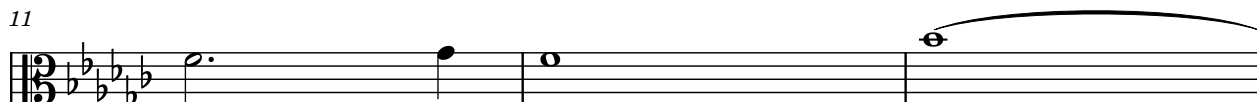


B. Guit.



11

Vla.



Vla.

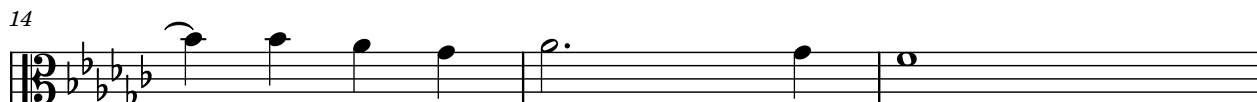


B. Guit.

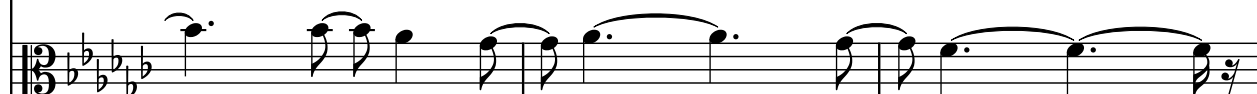


14

Vla.



Vla.




B. Guit.



17

Vla. 

Vla. 

B. Guit. 

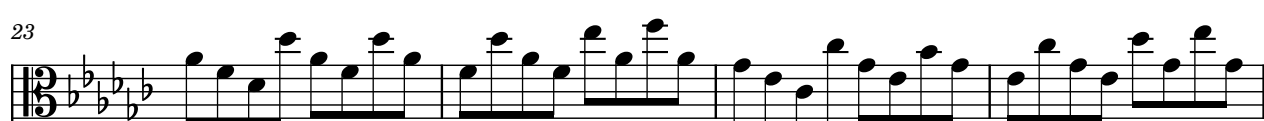
20

Vla. 

Vla. 

B. Guit. 

23

Vla. 

Vla. 

B. Guit. 

27

Vla. 

Vla. 

B. Guit. 

31

Vla. 

Vla. 

B. Guit. 

35

Vla.  **35** **36** **37** **38**

Vla.  **35** **36** **37** **38**

B. Guit.  **35** **36** **37** **38**

Detailed description: This block contains three staves of musical notation for measures 35 through 38. The top staff is for Violin I (Vla.), the middle for Violin II (Vla.), and the bottom for Bass Guitar (B. Guit.). All three staves are in the key of B-flat major (two flats) and 3/8 time. Measures 35 and 36 feature eighth-note patterns in the Violin parts and a steady eighth-note bass line in the guitar. Measures 37 and 38 show a continuation of these patterns, with the Violin parts ending on a half-note chord in measure 38 and the guitar continuing its bass line.