

Stage 5 - "Heart of Fire" (Metal Remix)

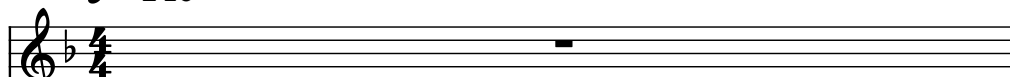
Composer: Kinuyo Yamashita

Game: Castlevania

pianogame.org

♩ = 140

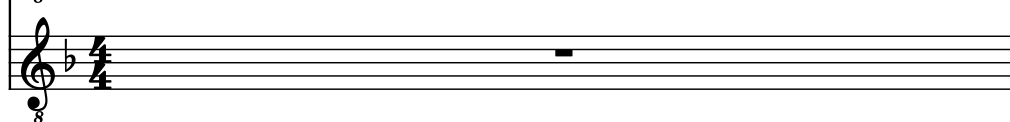
Electric Guitar, MIDI Ch. 1



Electric Guitar, MIDI Ch. 2

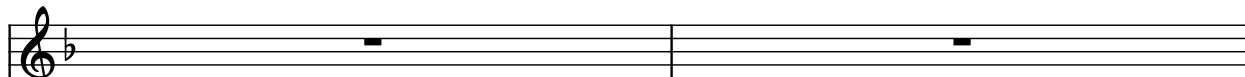


Electric Guitar, MIDI Ch. 3



2

El. Guit.



El. Guit.

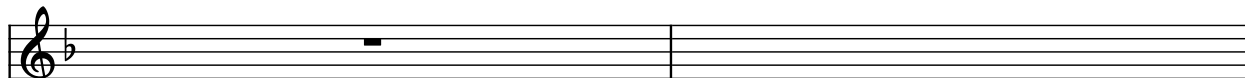


El. Guit.

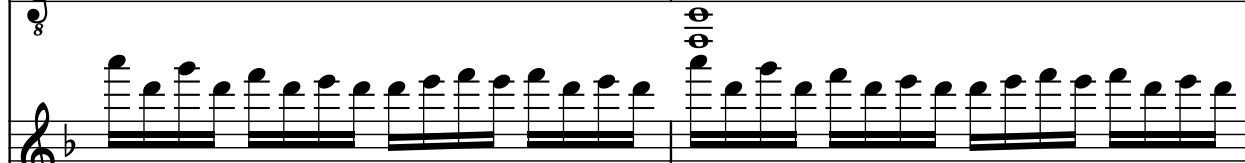


4

El. Guit.



El. Guit.

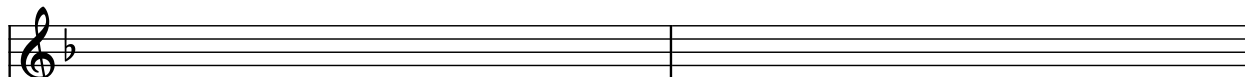


El. Guit.



6

El. Guit.



El. Guit.



El. Guit.



8

El. Guit.

El. Guit.

El. Guit.

10

El. Guit.

El. Guit.

El. Guit.

12

El. Guit.

El. Guit.

El. Guit.

15

El. Guit.

El. Guit.

El. Guit.

19

El. Guit.

28

El. Guit.

El. Guit.

El. Guit.

Detailed description: This system contains measures 28 and 29. The first staff (top) has a continuous eighth-note chordal pattern in measure 28, followed by a triplet of eighth notes in measure 29. The second staff (middle) has a melodic line in measure 28, rests in measure 29, and a triplet of eighth notes in measure 30. The third staff (bottom) has rests in measure 28, followed by a melodic line in measure 29, and rests in measure 30.

30

El. Guit.

El. Guit.

El. Guit.

Detailed description: This system contains measures 30 and 31. The first staff (top) has a continuous eighth-note chordal pattern in measure 30, followed by a melodic line in measure 31. The second staff (middle) has a melodic line in measure 30, followed by a melodic line in measure 31. The third staff (bottom) has a melodic line in measure 30, followed by a melodic line in measure 31.

33

El. Guit.

El. Guit.

El. Guit.

Detailed description: This system contains measures 33 and 34. The first staff (top) has a continuous eighth-note chordal pattern in measure 33, followed by a melodic line in measure 34. The second staff (middle) has rests in measure 33, followed by a melodic line in measure 34, and rests in measure 35. The third staff (bottom) has a melodic line in measure 33, followed by a melodic line in measure 34, and rests in measure 35.

36

El. Guit.

El. Guit.

El. Guit.

41

El. Guit.

El. Guit.

El. Guit.

44

El. Guit.

El. Guit.

El. Guit.

47

El. Guit.

El. Guit.

El. Guit.

52

El. Guit.

El. Guit.

El. Guit.

62

El. Guit.

El. Guit.

El. Guit.

71

El. Guit.

El. Guit.

El. Guit.

80

El. Guit.

El. Guit.

El. Guit.