

Go To Blazes! (Orch-Rock Remix)

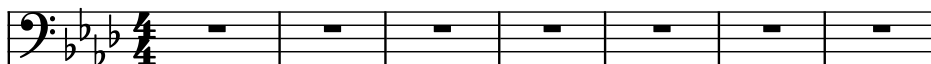
Composer: Akira Sato

Game: Raiden

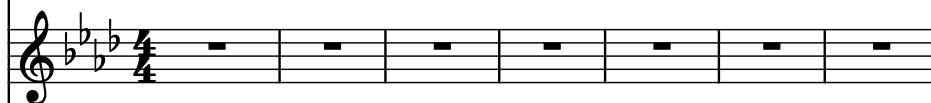
pianogame.org

♩ = 105

Contrabass, Contrabass/Bass



Saw Synthesizer, Saw Wave Lead



Violins (section), Strings

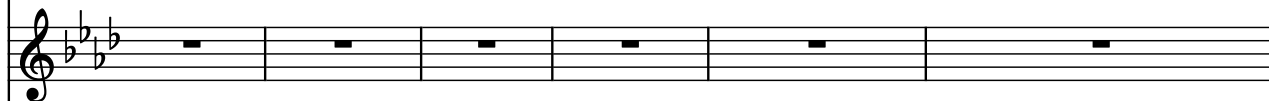


8

Cb.



Synth.



Vlns.

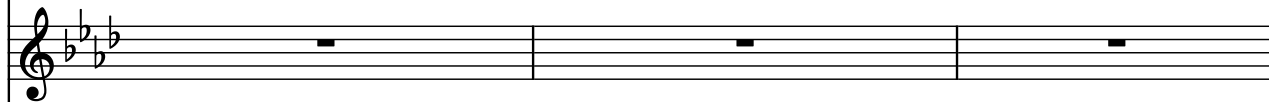


14

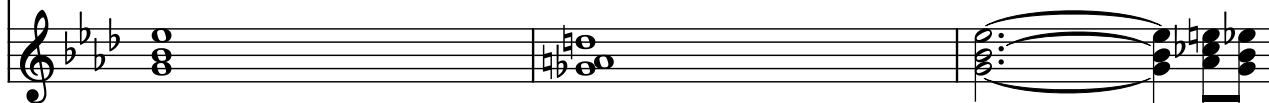
Cb.



Synth.



Vlns.



24

24

Cb.

Synth.

Vlns.

25

26

27

27

Cb.

Synth.

Vlns.

28

29

30

30

Cb.

Synth.

Vlns.

31

32

33

33

Cb.

Synth.

Vlns.

34

35

36

36

Cb.

Synth.

Vlns.

37

38

38

Cb. 

Synth. 

Vlns. 

40

Cb. 

Synth. 

Vlns. 

42

Cb. 

Synth. 

Vlns. 

44

Cb. 

Synth. 

Vlns. 

46

46

Cb.

Synth.

Vlns.

Measure 46: Cb. (Bass clef, key signature of three flats) has a melodic line starting on G2, moving up with eighth and sixteenth notes. Synth. (Treble clef) has a complex texture of chords and moving lines. Vlns. (Treble clef) has a whole rest.

Measure 47: Cb. continues the melodic line. Synth. continues with a similar texture. Vlns. has a half note chord consisting of G4, Bb4, and D5.

48

48

Cb.

Synth.

Vlns.

Measure 48: Cb. continues the melodic line. Synth. continues with a similar texture. Vlns. has a half note chord consisting of G4, Bb4, and D5.

Measure 49: Cb. continues the melodic line. Synth. continues with a similar texture. Vlns. has a half note chord consisting of G4, Bb4, and D5.

50

50

Cb.

Synth.

Vlns.

Measure 50: Cb. has a melodic line that ends with a whole note chord. Synth. has a complex texture of chords and moving lines. Vlns. has a half note chord consisting of G4, Bb4, and D5.

Measure 51: Cb. has a whole rest. Synth. has a whole rest. Vlns. has a whole rest.

Measure 52: Cb. has a whole rest. Synth. has a whole rest. Vlns. has a whole rest.

53

53

Cb.

Synth.

Vlns.

Measure 53: Cb. has a continuous sixteenth-note pattern. Synth. has a whole rest. Vlns. has a whole rest.

Measure 54: Cb. continues the sixteenth-note pattern. Synth. has a whole rest. Vlns. has a whole rest.

55

55

Cb.

Synth.

Vlns.

Measures 55-56. The Cb. part has a continuous eighth-note pattern. Synth. and Vlns. are silent until measure 56, where they play a chord.

57

57

Cb.

Synth.

Vlns.

Measures 57-58. The Cb. part continues with eighth notes. Synth. and Vlns. play a complex chordal pattern.

59

59

Cb.

Synth.

Vlns.

Measures 59-60. The Cb. part continues with eighth notes. Synth. and Vlns. play a complex chordal pattern.

61

61

Cb.

Synth.

Vlns.

Measures 61-62. The Cb. part continues with eighth notes. Synth. and Vlns. play a complex chordal pattern.

63

63

Cb.

Synth.

Vlns.

Measures 63-64. The Cb. part continues with eighth notes. Synth. and Vlns. play a complex chordal pattern.

65

Cb.

Synth.

Vlns.

67

Cb.

Synth.

Vlns.

69

Cb.

Synth.

Vlns.

71

Cb.

Synth.

Vlns.

73


Cb.

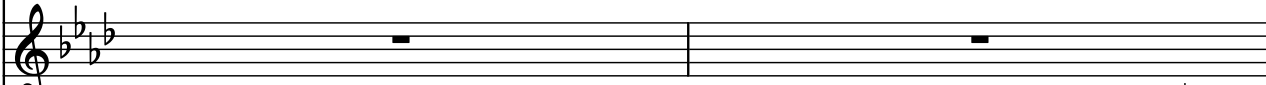
Synth.


Vlns.

75

75


Cb. 

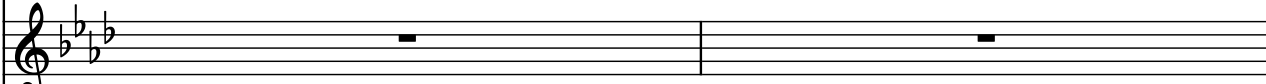
Synth. 

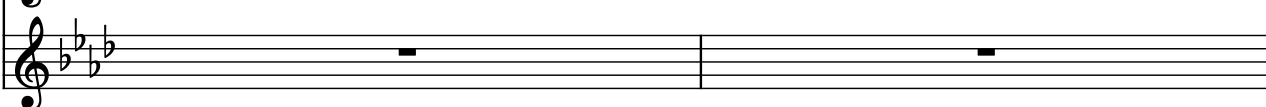
Vlns. 

77

77

Cb. 

Synth. 

Vlns. 

79

79

Cb. 

Synth. 

Vlns. 

81

81

Cb. 

Synth. 

Vlns. 

83

83

Cb. 

Synth. 

Vlns. 

85

Cb.

Synth.

Vlns.

87

Cb.

Synth.

Vlns.

89

Cb.

Synth.

Vlns.

91

Cb.

Synth.

Vlns.

93

Cb.

Synth.

Vlns.

96

96

Cb.

Synth.

Vlns.

Measures 96-98: Cb. (Bass Clef, 3 flats) plays a complex melodic line with many accidentals. Synth. (Treble Clef, 3 flats) and Vlns. (Treble Clef, 3 flats) are silent.

99

99

Cb.

Synth.

Vlns.

Measures 99-101: Cb. (Bass Clef, 3 flats) continues with a complex melodic line. Synth. (Treble Clef, 3 flats) and Vlns. (Treble Clef, 3 flats) are silent.

102

102

Cb.

Synth.

Vlns.

Measures 102-104: Cb. (Bass Clef, 3 flats) continues with a complex melodic line. Synth. (Treble Clef, 3 flats) and Vlns. (Treble Clef, 3 flats) are silent.

105

105

Cb.

Synth.

Vlns.

Measures 105-107: Cb. (Bass Clef, 3 flats) continues with a complex melodic line. Synth. (Treble Clef, 3 flats) and Vlns. (Treble Clef, 3 flats) are silent.

108

108

Cb.

Synth.

Vlns.

Measures 108-110: Cb. (Bass Clef, 3 flats) continues with a complex melodic line. Synth. (Treble Clef, 3 flats) and Vlns. (Treble Clef, 3 flats) are silent.

111

111

Cb.   

Synth.   

Vlins.   

114

114

Cb.   

Synth.   

Vlins.   

117

117

Cb.   

Synth.   

Vlins.   

120

120

Cb.   



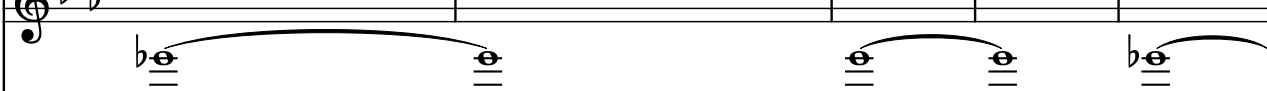
Synth.   



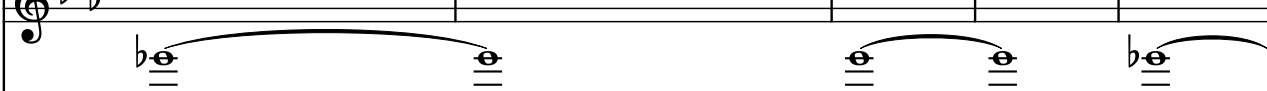
Vlins.   



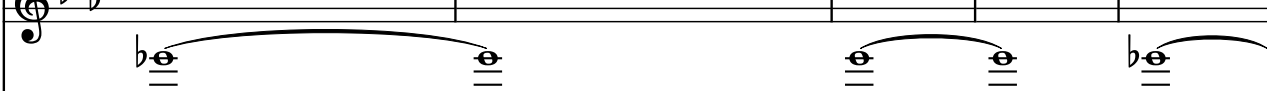
123

123

$\text{♩} = 100$

Cb.   

Synth.   

Vlins.   

128

♩ = 55

Music score for three staves: Cb., Synth., and Vlins. The key signature is three flats (B-flat, E-flat, A-flat). The tempo is marked as ♩ = 55.

Cb. (Contrabass): The staff begins with a bass clef and three flats. It contains a half note G2 (two ledger lines below the staff) in the first measure, which is tied to a half note G2 in the second measure.

Synth. (Synthesizer): The staff begins with a treble clef and three flats. It contains two whole rests, one in the first measure and one in the second measure.

Vlins. (Violins): The staff begins with a treble clef and three flats. It contains a half note G4 (first line of the staff) in the first measure, which is tied to a half note G4 in the second measure.