

Password Screen (4)

Composer: Yuko Takehara

Game: Mega Man X

pianogame.org

♩ = 104

Roto-Toms

Percussive Organ, Harmonica

Contrabass, Acoustic Bass

3

Roto

Perc. Org.

Cb.

5

Roto

Perc. Org.

Cb.

7

Roto

Perc. Org.

Cb.

Measures 7 and 8 of the musical score. The Roto part (treble clef) has a whole rest in measure 7 and a half note G4 in measure 8. The Perc. Org. part (treble clef) has a half note G4 in measure 7, followed by a triplet of eighth notes (A4, B4, C5) in measure 8, and a half note G4 in measure 9. The Cb. part (bass clef) has a half note G2 in measure 7, followed by a half note A2 in measure 8, and a half note B2 in measure 9. The key signature is B-flat major (two flats).

9

Roto

Perc. Org.

Cb.

Measures 9 and 10 of the musical score. The Roto part (treble clef) has a whole rest in measure 9 and a half note G4 in measure 10. The Perc. Org. part (treble clef) has a half note G4 in measure 9, followed by a triplet of eighth notes (A4, B4, C5) in measure 10, and a half note G4 in measure 11. The Cb. part (bass clef) has a half note G2 in measure 9, followed by a half note A2 in measure 10, and a half note B2 in measure 11. The key signature is B-flat major (two flats).

11

Roto

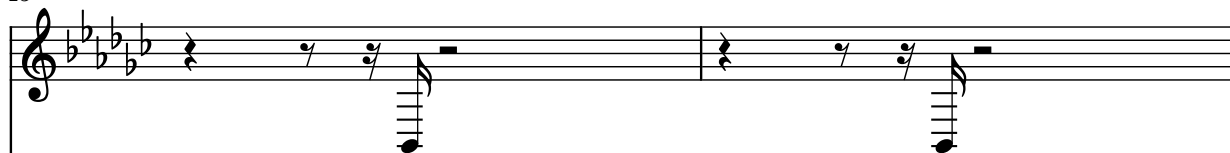
Perc. Org.

Cb.

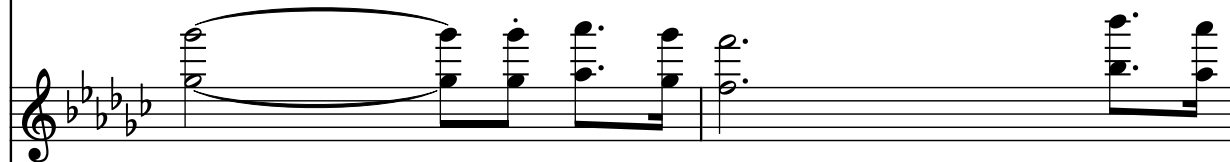
Measures 11 and 12 of the musical score. The Roto part (treble clef) has a whole rest in measure 11 and a half note G4 in measure 12. The Perc. Org. part (treble clef) has a half note G4 in measure 11, followed by a triplet of eighth notes (A4, B4, C5) in measure 12, and a half note G4 in measure 13. The Cb. part (bass clef) has a half note G2 in measure 11, followed by a half note A2 in measure 12, and a half note B2 in measure 13. The key signature is B-flat major (two flats).

13

Roto



Perc. Org.

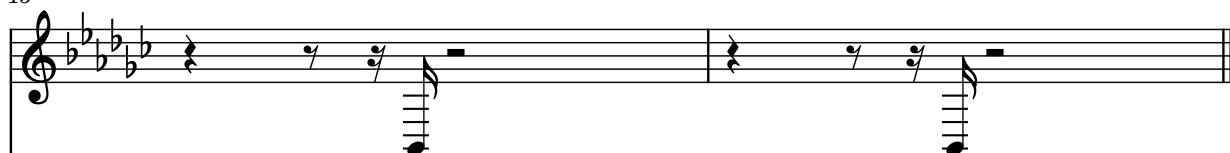


Cb.



15

Roto



Perc. Org.



Cb.

