

Music A (Evil Circus Remix)

Composer: Hirokazu Tanaka

Game: Tetris

pianogame.org

Example 6-10


Musical notation for Example 6-10: A single staff in 4/4 time with tempo marking ♩ = 120. The melody consists of eighth notes and rests.

[illegible]

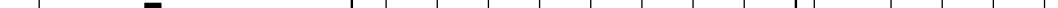
13

The musical notation consists of a single staff with a key signature of one flat (B-flat). The piece begins with a double bar line followed by two measures of whole notes (G2, A2), each with a fermata. This is followed by four measures of half notes (A2, Bb2, C3, D3) with a fermata over the first measure. Then, there are four measures of quarter notes (D3, E3, F3, G3) with a fermata over the first measure. Next are four measures of eighth notes (G3, A3, Bb3, C4) with a fermata over the first measure. Finally, there are four measures of sixteenth notes (C4, D4, E4, F4) with a fermata over the first measure. The piece ends with a double bar line.

16



19




The musical notation for Example 19 consists of a single staff. It begins with a double bar line. The first measure contains a quarter note, followed by a half note, and then a quarter note. The second measure contains a half note, followed by a quarter note, and then a half note. The third measure contains a quarter note, followed by a half note, and then a quarter note. The fourth measure contains a half note, followed by a quarter note, and then a half note. The fifth measure contains a quarter note, followed by a half note, and then a quarter note. The sixth measure contains a half note, followed by a quarter note, and then a half note. The seventh measure contains a quarter note, followed by a half note, and then a quarter note. The eighth measure contains a half note, followed by a quarter note, and then a half note. The ninth measure contains a quarter note, followed by a half note, and then a quarter note. The tenth measure contains a half note, followed by a quarter note, and then a half note. The eleventh measure contains a quarter note, followed by a half note, and then a quarter note. The twelfth measure contains a half note, followed by a quarter note, and then a half note. The thirteenth measure contains a quarter note, followed by a half note, and then a quarter note. The fourteenth measure contains a half note, followed by a quarter note, and then a half note. The fifteenth measure contains a quarter note, followed by a half note, and then a quarter note. The sixteenth measure contains a half note, followed by a quarter note, and then a half note. The seventeenth measure contains a quarter note, followed by a half note, and then a quarter note. The eighteenth measure contains a half note, followed by a quarter note, and then a half note. The nineteenth measure contains a quarter note, followed by a half note, and then a quarter note. The twentieth measure contains a half note, followed by a quarter note, and then a half note. The notation ends with a double bar line.

22

25

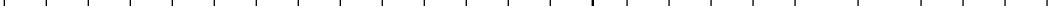
27



29

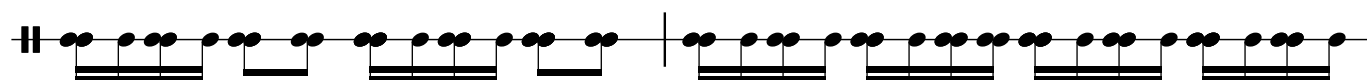
[illegible][illegible][illegible][illegible]

40

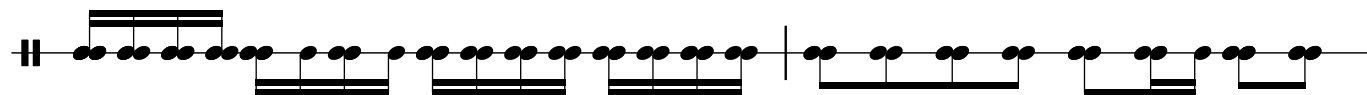


2

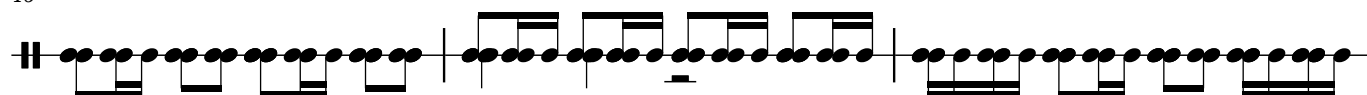
42



44



46



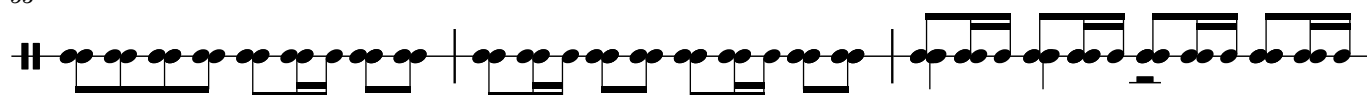
49



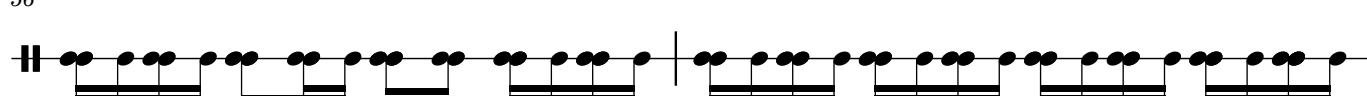
51



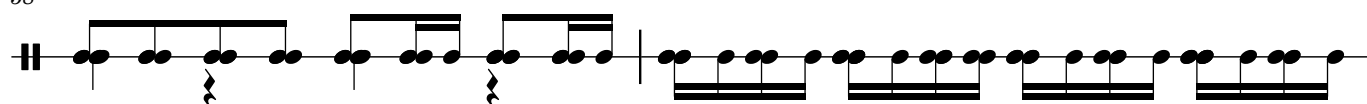
53



56



58



60

