

Hydro City Zone: Act 2 (XG)

Composer: Jun Senoue

Game: Sonic the Hedgehog 3

pianogame.org

♩ = 130

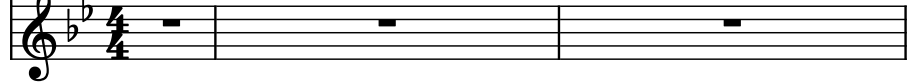
Bass Synthesizer, Hammer Bass



Mallet Synthesizer, Sine Bass Assist



Effect Synthesizer, Soft Wurl (Main)

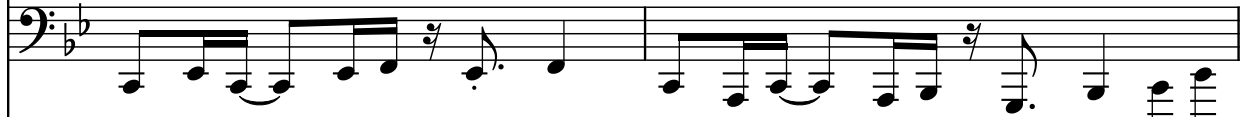


3

Synth.



Mal. Syn.

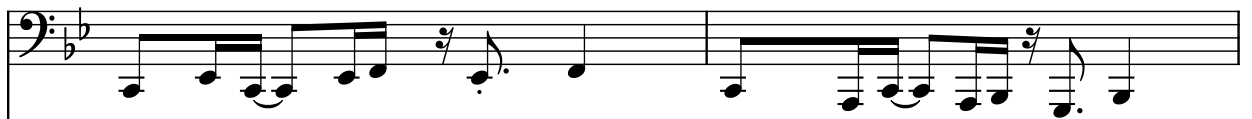


Synth.



5

Synth.



Mal. Syn.



Synth.



7

Synth.



Mal. Syn.



Synth.



9

Synth.

Mal. Syn.

Synth.

11

Synth.

Mal. Syn.

Synth.

13

Synth.

Mal. Syn.

Synth.

16

Synth.

Mal. Syn.

Synth.

19

Synth.

Mal. Syn.

Synth.

21

Synth.

Mal. Syn.

Synth.

23

Synth.

Mal. Syn.

Synth.

25

Synth.

Mal. Syn.

Synth.

27

Synth.

Mal. Syn.

Synth.

27

30

Synth.

Mal. Syn.

Synth.

30

33

Synth.

Mal. Syn.

Synth.

33

35

Synth.

Mal. Syn.

Synth.

35

37

Synth.

Mal. Syn.

Synth.

39

Synth.

Mal. Syn.

Synth.

41

Synth.

Mal. Syn.

Synth.

44

Synth.

Mal. Syn.

Synth.

47

Synth.

Mal. Syn.

Synth.

49

Synth.

Mal. Syn.

Synth.

51

Synth.

Mal. Syn.

Synth.

53

Synth.

Mal. Syn.

Synth.

The musical score for 'The Sound of Silence' is presented in three staves. The top staff, labeled 'Synth.', is in bass clef and contains the main melody. The middle staff, labeled 'Mal. Syn.', is also in bass clef and provides a harmonic accompaniment. The bottom staff, labeled 'Synth.', is in treble clef and features a rhythmic pattern. The key signature is one flat (B-flat), and the time signature is 4/4. The score includes various musical notations such as notes, rests, and bar lines.

58

Synth.
 Mal. Syn.
 Synth.

The image shows a musical score for three parts: Synth., Mal. Syn., and Synth. The first two parts are in bass clef with a key signature of one flat (B-flat). The third part is in treble clef with the same key signature. The first two parts play a complex, syncopated melody with many beamed sixteenth and thirty-second notes, and frequent rests. The third part is mostly silent, with a few notes appearing at the end of the third measure.

61

The image displays a musical score for the song "The Sound of Silence" by Simon & Garfunkel. It features three staves. The top two staves are labeled "Synth." and "Mal. Syn." (Mallet Synthesizer) and both use a bass clef with a key signature of one flat (B-flat). The bottom staff is labeled "Synth." and uses a treble clef with the same key signature. The music is in 4/4 time. The top two staves play a melodic line with eighth and sixteenth notes, while the bottom staff provides a complex accompaniment with chords, arpeggios, and sixteenth-note patterns. The score is presented in a clean, black-and-white format with standard musical notation.

63

The musical score for 'The Sound of Silence' is presented in three staves. The top two staves are in bass clef with a key signature of one flat (B-flat). The bottom staff is in treble clef with the same key signature. The top staff, labeled 'Synth.', contains a melodic line with eighth and sixteenth notes, including a triplet. The middle staff, labeled 'Mal. Syn.', provides a harmonic accompaniment with similar rhythmic patterns. The bottom staff, labeled 'Synth.', features a complex, multi-layered texture with many beamed notes, suggesting a dense electronic sound. The score concludes with a final chord in the bottom staff.

65

Synth.

Mal. Syn.

Synth.

67

Synth.

Mal. Syn.

Synth.

69

Synth.

Mal. Syn.

Synth.

72

Synth.

Mal. Syn.

Synth.

75

Synth.

Mal. Syn.

Synth.

77

Synth.

Mal. Syn.

Synth.

79

Synth.

Mal. Syn.

Synth.

81

Synth.

Mal. Syn.

Synth.

83

Synth.

Mal. Syn.

Synth.

86

Synth.

Mal. Syn.

Synth.

89

Synth.

Mal. Syn.

Synth.

91

Synth.

Mal. Syn.

Synth.

93

Synth.

Mal. Syn.

Synth.

95

Synth.

Mal. Syn.

Synth.

97

Synth.

Mal. Syn.

Synth.

100

Synth.

Mal. Syn.

Synth.

103

Synth.

Mal. Syn.

Synth.

105

Synth.

Mal. Syn.

Synth.

107

Synth.

Mal. Syn.

Synth.

109

Synth.

Mal. Syn.

Synth.

111

Synth.

Mal. Syn.

Synth.

111

114

Synth.

Mal. Syn.

Synth.

114