

Red Light

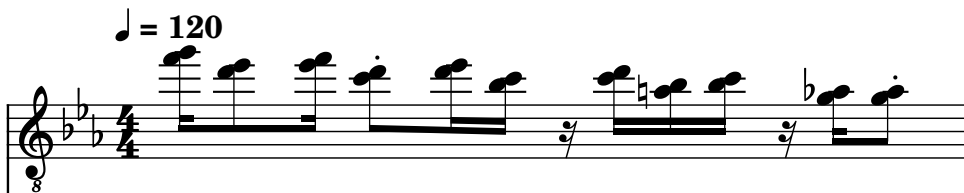
Composer: Chris Granner

Game: High Speed 2

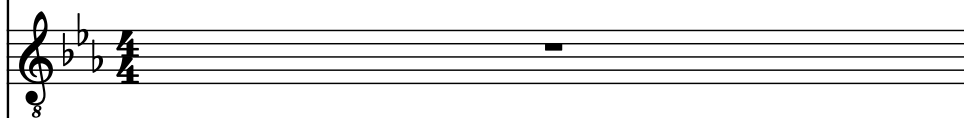
pianogame.org

♩ = 120

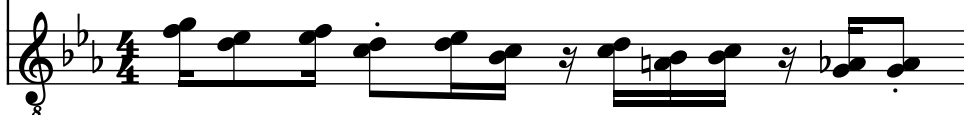
Electric Guitar, Electric Guitar



Electric Guitar, Electric Guitar



Electric Guitar, Electric Guitar



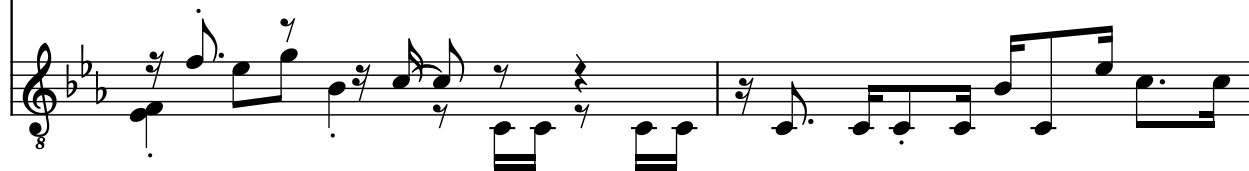
El. Guit.



El. Guit.



El. Guit.



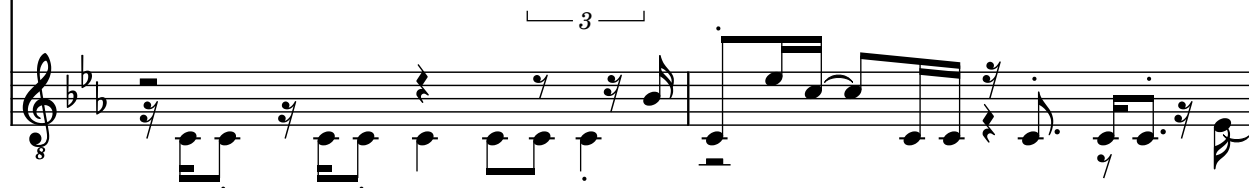
El. Guit.



El. Guit.



El. Guit.



6

El. Guit.

El. Guit.

El. Guit.

8

El. Guit.

El. Guit.

El. Guit.

10

El. Guit.

El. Guit.

El. Guit.

12

El. Guit.

Three staves of musical notation for measures 12 and 13. The key signature has two flats (B-flat and E-flat). The first staff (labeled 'El. Guit.') contains a complex melodic line with many beamed sixteenth and thirty-second notes. The second and third staves contain more melodic lines with some triplets indicated by a '3' over a bracket. The first staff has a measure rest in measure 13.

14

El. Guit.

Three staves of musical notation for measures 14 and 15. The key signature has two flats. The first staff has a measure rest in measure 14. The second and third staves contain melodic lines with triplets indicated by a '3' over a bracket. The first staff has a measure rest in measure 15.

16

El. Guit.

Three staves of musical notation for measures 16 and 17. The key signature has two flats. The first staff has a measure rest in measure 16. The second and third staves contain melodic lines with triplets indicated by a '3' over a bracket. The first staff has a measure rest in measure 17.

18

El. Guit.

El. Guit.

El. Guit.

21

El. Guit.

El. Guit.

El. Guit.

23

El. Guit.

El. Guit.

El. Guit.

25

El. Guit.

8

El. Guit.

8

El. Guit.

8

The image shows three staves of electric guitar notation, each labeled 'El. Guit.' and starting with a measure number '8'. The music is in B-flat major (two flats) and 4/4 time. The first staff (measure 25) features a melodic line with eighth and sixteenth notes, including triplets and slurs. The second staff (measure 26) continues the melodic line with eighth notes and slurs. The third staff (measure 27) features a bass line with eighth and sixteenth notes, including triplets and slurs. The notation includes various guitar-specific symbols like slurs, triplets, and slanted lines indicating bends or vibrato.