

The Centennial Festival for Magical Girls

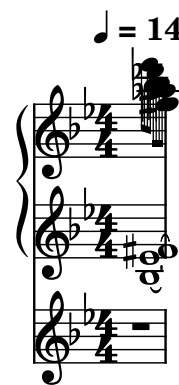
Composer: ZUN

Game: Touhou 6: Embodiment of Scarlet Devil

pianogame.org

♩ = 149

Piano, Touhou 6: Embodiment of Scarlet Devil - The Centennial Festival for Magical Girls



Xylomarimba, Touhou 6: Embodiment of Scarlet Devil - The Centennial Festival for Magical Girls

2

Pno.

XMrm.

6

Pno.

XMrm.

10

Pno.

XMrm.

14

Pno.

XMrm.

Musical notation for Piano and Xylomarimba, Touhou 6: Embodiment of Scarlet Devil - The Centennial Festival for Magical Girls. The notation is arranged in four systems, each with two staves. The top staff is for Piano (Pno.) and the bottom staff is for Xylomarimba (XMrm.). The Piano part features a complex melodic line in the treble clef and a supporting bass line in the bass clef. The Xylomarimba part is mostly silent, indicated by a series of horizontal lines. The notation includes a 4/4 time signature, a key signature of two flats (B-flat and E-flat), and a tempo of 149 beats per minute. The notation is numbered 2, 6, 10, and 14, indicating measures.

$\text{♩} = 142$

19

Pno.

XMrm.

Measures 19-20. The piano part (Pno.) features a complex melodic line in the treble staff and a single half note in the bass staff. The XMrm. part consists of a single treble staff with a whole rest.

21

Pno.

XMrm.

Measures 21-24. The piano part (Pno.) features a melodic line in the treble staff and a half note in the bass staff, tied across measures. The XMrm. part consists of a treble staff with a complex rhythmic pattern.

25

Pno.

XMrm.

Measures 25-28. The piano part (Pno.) features a melodic line in the treble staff and a half note in the bass staff, tied across measures. The XMrm. part consists of a treble staff with a complex rhythmic pattern.

29

Pno.

XMrm.

Measures 29-32. The piano part (Pno.) features a melodic line in the treble staff and a whole rest in the bass staff. The XMrm. part consists of a single treble staff with a whole rest.

33 $\text{♩} = 144$

Pno.

XMrm.

Measures 33-36. The piano part features a continuous eighth-note triplet pattern in the right hand and a bass line in the left hand. The XMrm. part is a single staff with rests.

37 $\text{♩} = 149$

Pno.

XMrm.

Measures 37-39. The piano part continues with eighth-note triplets, with a more complex rhythmic pattern in measure 39. The XMrm. part has rests in measures 37-38 and a single note in measure 39.

40

Pno.

XMrm.

Measures 40-43. The piano part features a continuous eighth-note triplet pattern in the right hand and a bass line in the left hand. The XMrm. part is a single staff with rests.

44

Pno.

XMrm.

Measures 44-47. The piano part continues with eighth-note triplets. The XMrm. part has rests in measures 44-46 and a single note in measure 47.

48

Pno.

XMrm.

Measures 48-51. The piano part features a complex melodic line in the right hand with many accidentals and a sustained bass line in the left hand. The XMrm. part is a single staff with whole rests.

52

Pno.

XMrm.

Measures 52-57. The piano part continues with a complex melodic line in the right hand and a sustained bass line in the left hand. The XMrm. part is a single staff with whole rests.

58

$\text{♩} = 145$

Pno.

XMrm.

Measures 58-60. The piano part features a complex melodic line in the right hand and a sustained bass line in the left hand. The XMrm. part is a single staff with whole rests.

61

$\text{♩} = 142$

3

Pno.

XMrm.

Measures 61-65. The piano part features a complex melodic line in the right hand and a sustained bass line in the left hand. The XMrm. part is a single staff with whole rests.

66

Pno.

XMrm.

3

70

Pno.

XMrm.

3

3

3

75

Pno.

XMrm.

3

3

80

Pno.

XMrm.

3

84

Pno.

XMrm.

3

3

3

3

89

Pno.

XMrm.

3

3

3

3