

Story Dialog - "Theme of Super Metroid" (3)

Composer: Kenji Yamamoto

Game: Super Metroid

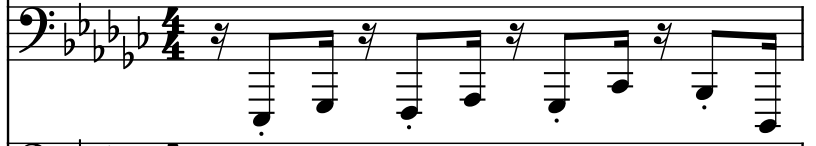
pianogame.org

♩ = 112

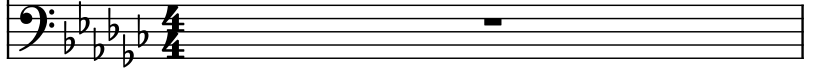
Bass Synthesizer, Theme of Super Metroid



Bass Synthesizer, from Super Metroid SNES



Contrabasses (section), sequenced by:



2

Synth.



Synth.



Cbs.

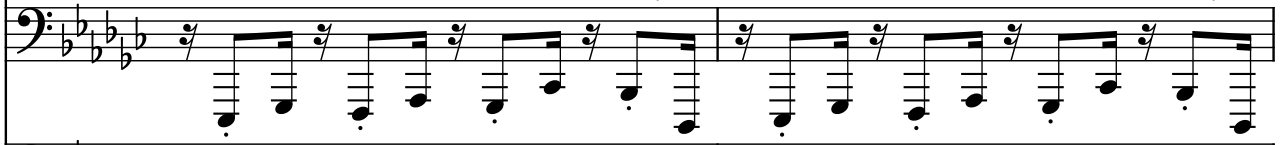


4

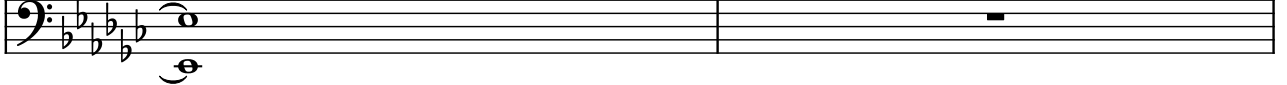
Synth.



Synth.



Cbs.



6

Synth.




Synth.




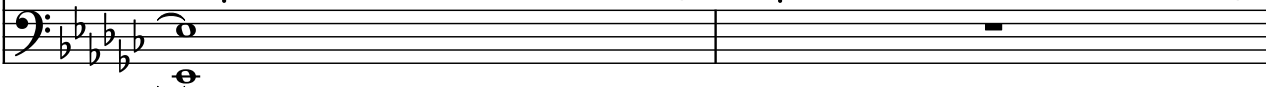
Cbs.



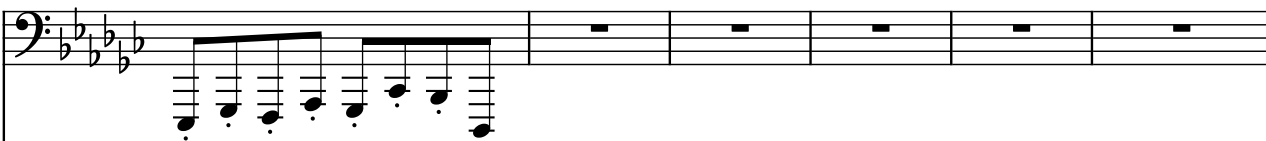
8

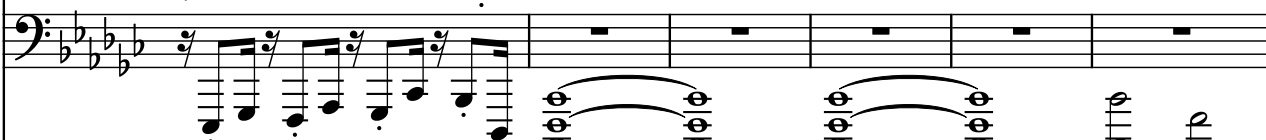
Synth. 


Synth. 

Cbs. 

10

Synth. 

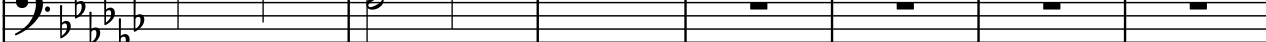
Synth. 

Cbs. 


16


Synth. 

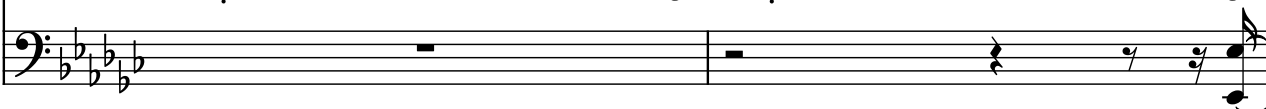
Synth. 

Cbs. 


23


Synth. 


Synth. 

Cbs. 


25


Synth. 

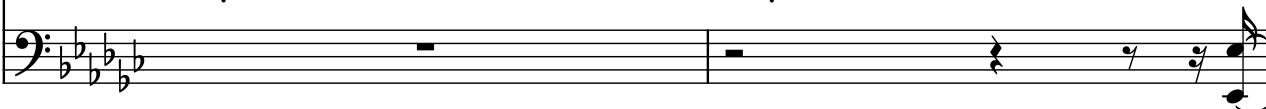
Synth. 

Cbs. 

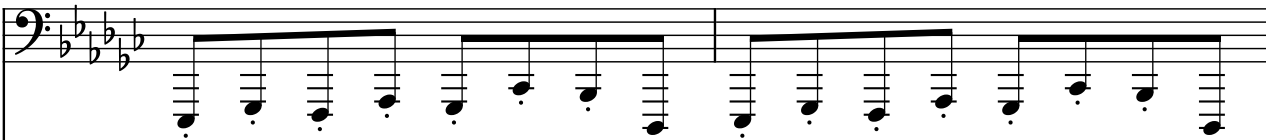
27


Synth. 

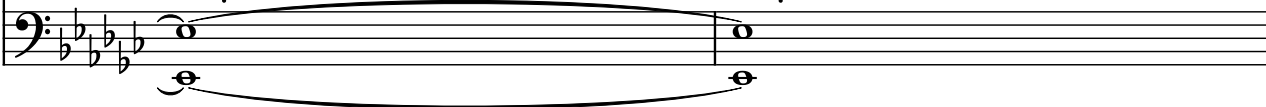
Synth. 

Cbs. 


29


Synth. 

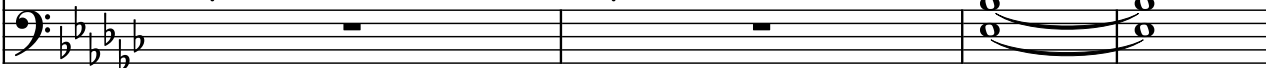
Synth. 

Cbs. 

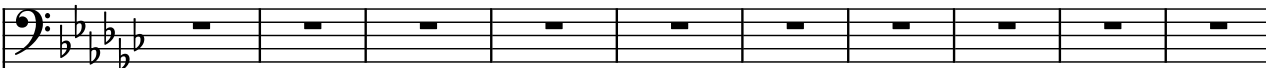
31

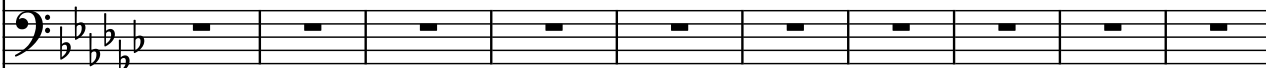
Synth. 

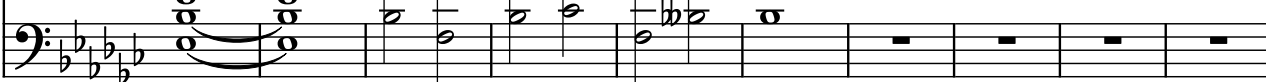
Synth. 

Cbs. 

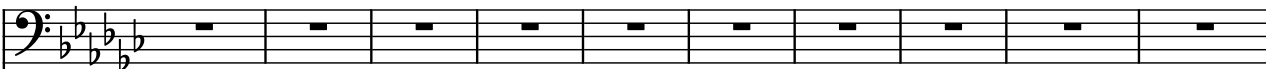
35

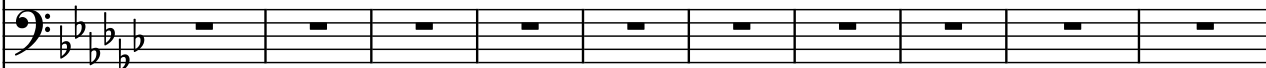
Synth. 


Synth. 

Cbs. 

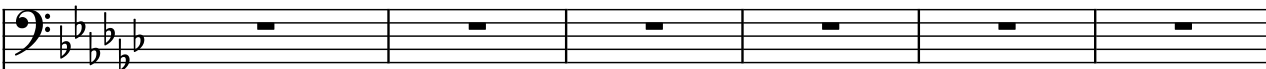
45

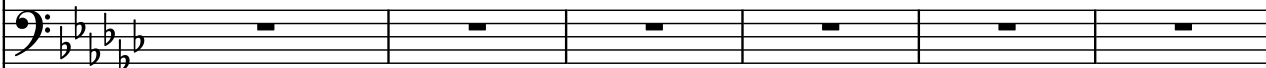
Synth. 


Synth. 

Cbs. 


55


Synth. 

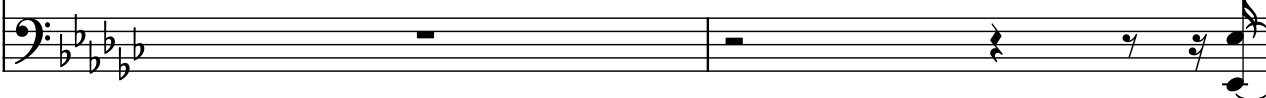
Synth. 

Cbs. 

61

Synth. 

Synth. 

Cbs. 

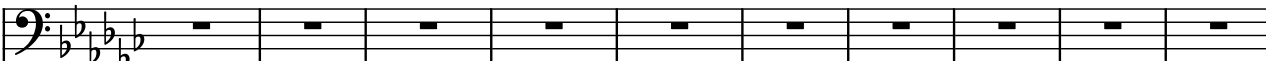
65

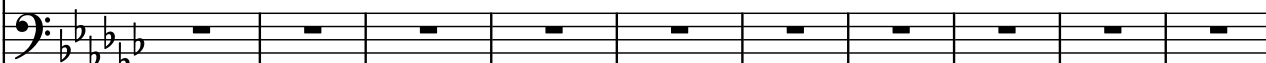
67


69

The image shows a musical score for the song "The Sound of Silence" by Simon & Garfunkel. The score is written for two parts: Synth (Synthesizer) and Cbs. (Cello). The key signature is B-flat major (two flats) and the time signature is 4/4. The Synth part consists of a melody line and a bass line. The Cbs. part consists of a single line. The score is divided into three measures. The first measure shows the Synth melody and bass line, and the Cbs. line. The second measure shows the Synth melody and bass line, and the Cbs. line. The third measure shows the Synth melody and bass line, and the Cbs. line. The Synth part is written in a grand staff (treble and bass clefs), and the Cbs. part is written in a single bass clef staff.


73

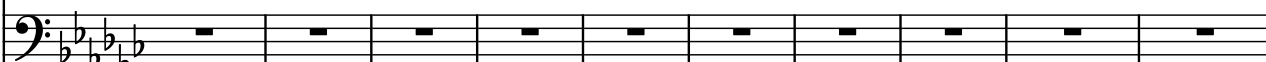
Synth. 

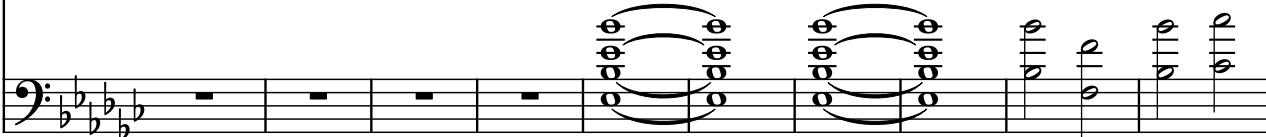
Synth. 

Cbs. 

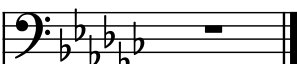
83

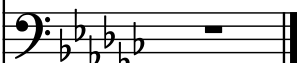
Synth. 

Synth. 

Cbs. 

93

Synth. 

Synth. 

Cbs. 