

Silence (5)

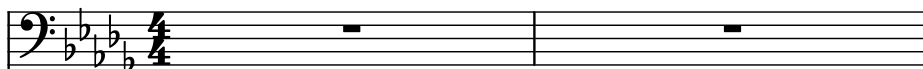
Composer: Yumiko Kanki

Game: F-Zero

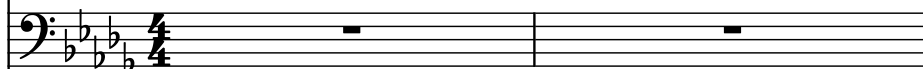
pianogame.org

♩ = 160

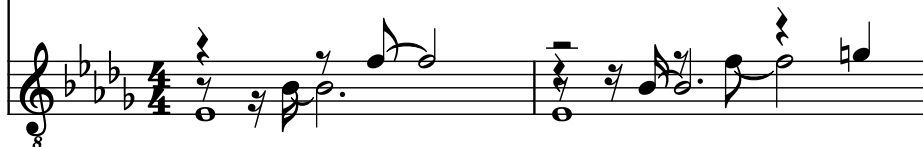
5-str. Electric Bass, Fingered Bass



Bass Guitar, Picked Bass

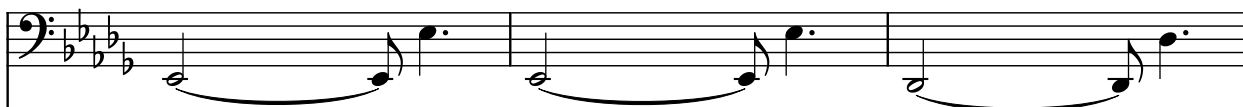


Electric Guitar, Distortion Guitar

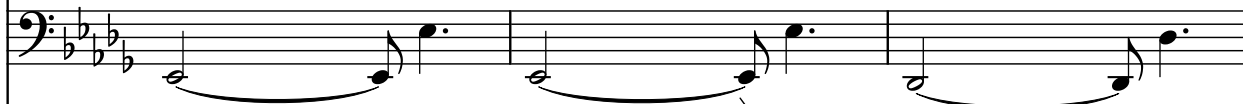


3

El. B.



B. Guit.

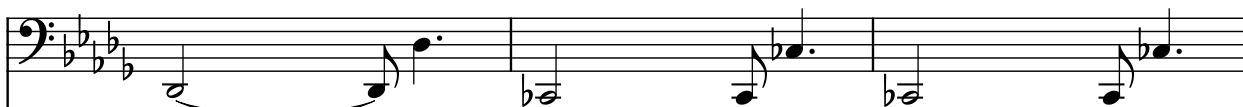


El. Guit.

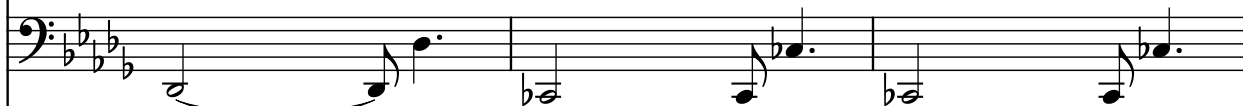


6

El. B.



B. Guit.

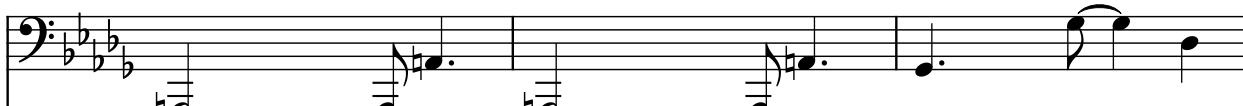


El. Guit.



9

El. B.



B. Guit.



El. Guit.



12

El. B.

B. Guit.

El. Guit.

Measures 12-14. El. B. and B. Guit. play a descending eighth-note line. El. Guit. plays a complex pattern with eighth notes and rests.

15

El. B.

B. Guit.

El. Guit.

Measures 15-17. El. B. and B. Guit. play a descending eighth-note line. El. Guit. plays a complex pattern with eighth notes and rests.

18

El. B.

B. Guit.

El. Guit.

Measures 18-20. El. B. and B. Guit. play a descending eighth-note line. El. Guit. plays a complex pattern with eighth notes and rests.

21

El. B.

B. Guit.

El. Guit.

Measures 21-23. El. B. and B. Guit. play a descending eighth-note line. El. Guit. plays a complex pattern with eighth notes and rests.

24

El. B.

B. Guit.

El. Guit.

Measures 24-26. El. B. and B. Guit. play a descending eighth-note line. El. Guit. plays a complex pattern with eighth notes and rests.

27

El. B.

B. Guit.

El. Guit.

30

El. B.

B. Guit.

El. Guit.

33

El. B.

B. Guit.

El. Guit.

36

El. B.

B. Guit.

El. Guit.

39

El. B.

B. Guit.

El. Guit.

8

42

El. B.

B. Guit.

El. Guit.

8

45

El. B.

B. Guit.

El. Guit.

8

48

El. B.

B. Guit.

El. Guit.

8

51

El. B.

B. Guit.

El. Guit.

8

54

El. B.

B. Guit.

El. Guit.

This musical system covers measures 54, 55, and 56. It features three staves: El. B. (Electric Bass), B. Guit. (Bass Guitar), and El. Guit. (Electric Guitar). The key signature is three flats (B-flat, E-flat, A-flat). The El. B. and B. Guit. staves are in bass clef and play a melodic line with eighth notes and dotted eighth notes, connected by slurs. The El. Guit. staff is in treble clef and plays a rhythmic accompaniment with eighth notes, quarter notes, and rests, featuring a 'chicken pickin'' style. A '8' is written below the first staff of the system.

57

El. B.

B. Guit.

El. Guit.

This musical system covers measures 57, 58, and 59. It features the same three staves as the previous system. The key signature remains three flats. The El. B. and B. Guit. staves continue the melodic line, ending with a double bar line in measure 59. The El. Guit. staff continues the rhythmic accompaniment, also ending with a double bar line in measure 59.