

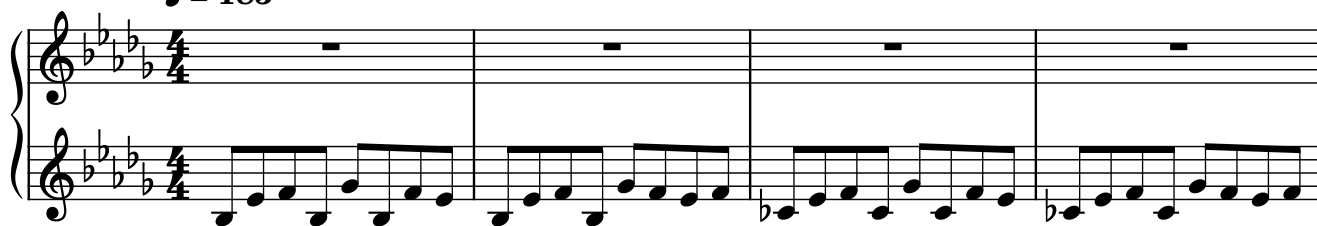
Music - Level 3

Composer: Matthew Simmonds

Game: Logical

pianogame.org

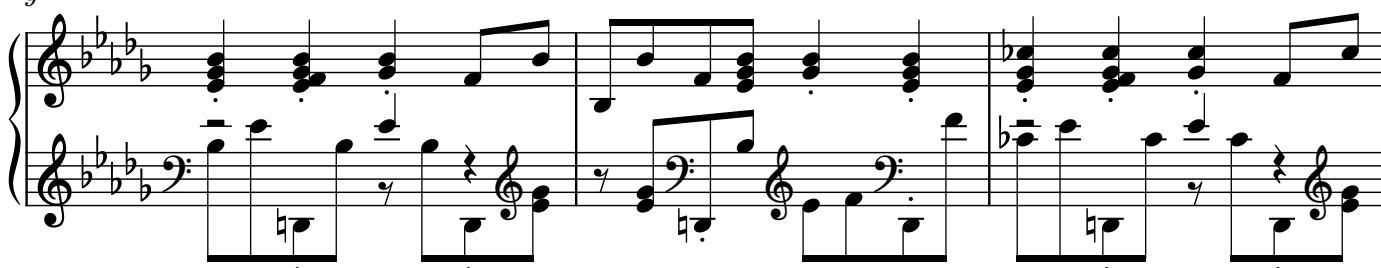
♩ = 185



5



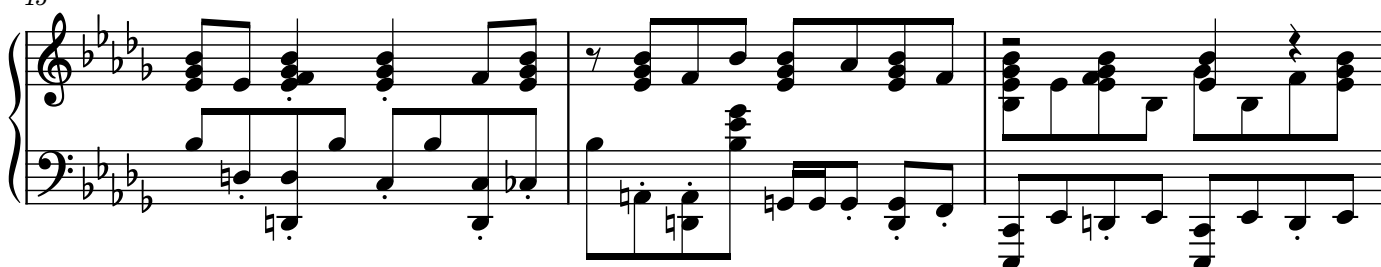
9



12



15



18



21

Measures 21-24 of a musical score in E-flat major (three flats). The score is written for piano with a grand staff (treble and bass clefs). The melody in the right hand features a series of chords and eighth notes, while the left hand provides a steady accompaniment of eighth notes.

25

Measures 25-26 of the musical score. Measure 25 continues the previous texture, while measure 26 introduces a new melodic line in the right hand, featuring a half note and a quarter note, with a corresponding change in the left hand accompaniment.

27

Measures 27-29 of the musical score. Measure 27 shows a continuation of the melodic and harmonic development. Measures 28 and 29 feature more complex chordal structures and melodic movement in both hands, with the left hand playing a more active role.

30

Measures 30-32 of the musical score. Measure 30 continues the melodic line in the right hand. Measures 31 and 32 show a final development of the themes, with the right hand playing a series of chords and the left hand providing a rhythmic foundation.

33

Measures 33 and 34 of a musical score. The key signature has three flats (B-flat, E-flat, A-flat). The score is written for piano with two staves. Measure 33 features a complex texture with multiple chords and moving lines in both staves. Measure 34 continues this texture with some notes marked with a 'z' (possibly indicating a grace note or a specific articulation).

35

Measures 35 and 36 of a musical score. Measure 35 shows a continuation of the complex texture. Measure 36 features a large, sustained chord in the right hand, while the left hand has a more active line. A 'z' mark is present above the first note of the right-hand chord.

37

Measures 37 and 38 of a musical score. Measure 37 shows a continuation of the complex texture. Measure 38 features a large, sustained chord in the right hand, while the left hand has a more active line. A 'z' mark is present above the first note of the right-hand chord.

39

Measures 39 and 40 of a musical score. Measure 39 shows a continuation of the complex texture. Measure 40 features a large, sustained chord in the right hand, while the left hand has a more active line. A 'z' mark is present above the first note of the right-hand chord.

41

Measures 41 and 42 of a musical score. The key signature has three flats (B-flat, E-flat, A-flat). The score is written for piano with a grand staff (treble and bass clefs). Measure 41 features a complex texture with multiple chords and moving lines in both hands. Measure 42 continues this texture with some rests and sustained notes.

43

Measures 43 and 44 of a musical score. The key signature remains three flats. Measure 43 shows a continuation of the complex harmonic texture with some changes in the bass line. Measure 44 features a more active bass line with eighth notes and a sustained treble line.

45

Measures 45, 46, and 47 of a musical score. The key signature remains three flats. Measure 45 has a complex texture with many notes. Measure 46 features a more active bass line with eighth notes and a sustained treble line. Measure 47 continues the complex texture with some rests and sustained notes.

48

Measures 48, 49, and 50 of a musical score. The key signature remains three flats. Measure 48 features a complex texture with many notes. Measure 49 has a more active bass line with eighth notes and a sustained treble line. Measure 50 continues the complex texture with some rests and sustained notes.

51

Measures 51 and 52 of a musical score. The key signature has four flats (B-flat, E-flat, A-flat, D-flat). The score is written for piano with a grand staff (treble and bass clefs). Measure 51 features a complex texture with multiple chords and moving lines in both hands. Measure 52 continues this texture with some rests and sustained notes.

53

Measures 53 and 54 of a musical score. The key signature remains four flats. Measure 53 shows a continuation of the complex harmonic texture. Measure 54 features a more active melodic line in the right hand, with some notes beamed together, while the left hand provides a steady accompaniment.

55

Measures 55 and 56 of a musical score. The key signature remains four flats. Measure 55 continues the complex texture. Measure 56 features a more active melodic line in the right hand, with some notes beamed together, while the left hand provides a steady accompaniment.

57

Measures 57 and 58 of a musical score. The key signature remains four flats. Measure 57 continues the complex texture. Measure 58 features a more active melodic line in the right hand, with some notes beamed together, while the left hand provides a steady accompaniment.

59

System 1 (Measures 59-61): The score is in 3/4 time with a key signature of three flats (B-flat, E-flat, A-flat). The right hand features a melodic line with eighth and sixteenth notes, often beamed together, and includes some grace notes. The left hand provides a harmonic accompaniment with chords and moving lines. Measure 59 starts with a grace note on the right hand. Measure 61 ends with a repeat sign.

62

System 2 (Measures 62-64): Continues the musical piece. The right hand has more complex rhythmic patterns, including triplets and sixteenth notes. The left hand maintains a steady accompaniment. Measure 64 ends with a repeat sign.

65

System 3 (Measures 65-66): Measures 65 and 66. The right hand continues with melodic fragments and rests. The left hand has a more active role with eighth-note patterns. Measure 66 ends with a repeat sign.

67

System 4 (Measures 67-68): Measures 67 and 68. Measure 67 features a grace note in the right hand. Measure 68 includes a large, complex chord in the right hand, indicated by a box, and a long melodic line. The system concludes with a repeat sign.

69

Measures 69-70 of a musical score in E-flat major (three flats). The piece is in 4/4 time. Measure 69 features a complex texture with multiple sixteenth-note runs in both staves, including triplets. Measure 70 continues with similar rhythmic patterns, featuring a prominent triplet in the right hand.

71

Measures 71-72 of the musical score. Measure 71 shows a continuation of the sixteenth-note patterns, with a triplet in the right hand. Measure 72 features a more active right hand with sixteenth-note runs and a steady bass line.

73

Measures 73-74 of the musical score. Measure 73 has a right hand with a triplet and a bass line with eighth notes. Measure 74 continues the bass line with eighth notes and a right hand with a triplet.

75

Measures 75-76 of the musical score. Measure 75 features a right hand with a triplet and a bass line with eighth notes. Measure 76 continues the bass line with eighth notes and a right hand with a triplet.

77

Measures 77-78 of a musical score in B-flat major (three flats). The system consists of two staves. The upper staff features a treble clef and contains a series of chords and single notes, including a triplet of eighth notes in measure 78. The lower staff features a bass clef and contains a series of chords and single notes, including a triplet of eighth notes in measure 78. The key signature is B-flat major (three flats).

79

Measures 79-81 of a musical score in B-flat major (three flats). The system consists of two staves. The upper staff features a treble clef and contains a series of chords and single notes, including a triplet of eighth notes in measure 81. The lower staff features a bass clef and contains a series of chords and single notes, including a triplet of eighth notes in measure 81. The key signature is B-flat major (three flats).

82

Measures 82-83 of a musical score in B-flat major (three flats). The system consists of two staves. The upper staff features a treble clef and contains a series of chords and single notes, including a triplet of eighth notes in measure 83. The lower staff features a bass clef and contains a series of chords and single notes, including a triplet of eighth notes in measure 83. The key signature is B-flat major (three flats).

84

Measures 84-85 of a musical score in B-flat major (three flats). The system consists of two staves. The upper staff features a treble clef and contains a series of chords and single notes, including a triplet of eighth notes in measure 85. The lower staff features a bass clef and contains a series of chords and single notes, including a triplet of eighth notes in measure 85. The key signature is B-flat major (three flats).

86

Measures 86 and 87 of a musical score. The key signature is three flats (B-flat, E-flat, A-flat). The time signature is 4/4. The score is written for piano with a grand staff (treble and bass clefs). Measure 86 features a complex texture with multiple chords and moving lines in both hands. Measure 87 continues the texture with some rests and sustained notes.

88

Measures 88 and 89 of a musical score. The key signature is three flats. Measure 88 shows a continuation of the complex texture with some changes in the bass line. Measure 89 features a more active bass line with eighth notes and a sustained treble line.

90

Measures 90 and 91 of a musical score. The key signature is three flats. Measure 90 has a more active treble line with eighth notes and a sustained bass line. Measure 91 features a complex texture with multiple chords and moving lines in both hands.

92

Measures 92 through 95 of a musical score. The key signature is three flats. Measure 92 features a complex texture with multiple chords and moving lines in both hands. Measure 93 continues the texture with some rests and sustained notes. Measure 94 features a more active bass line with eighth notes and a sustained treble line. Measure 95 features a complex texture with multiple chords and moving lines in both hands.

95

Measures 95-97 of a musical score in 3/4 time, key of B-flat major. The score is written for piano with a grand staff (treble and bass clefs). Measure 95 features a treble staff with a half note G4, a quarter note F#4, and a half note E4, with a bass staff accompaniment of eighth notes. Measure 96 continues the treble staff melody with a half note D5, a quarter note C#5, and a half note B4, while the bass staff has a half note G3 and a quarter note F#3. Measure 97 shows a treble staff with a half note A4, a quarter note G#4, and a half note F#4, with a bass staff accompaniment of eighth notes. The key signature has two flats (B-flat and E-flat).

98

Measures 98-100 of a musical score in 3/4 time, key of B-flat major. Measure 98 features a treble staff with a half note E4, a quarter note D#4, and a half note C#4, with a bass staff accompaniment of eighth notes. Measure 99 continues the treble staff melody with a half note B3, a quarter note A#3, and a half note G#3, while the bass staff has a half note F#3 and a quarter note E#3. Measure 100 shows a treble staff with a half note F#4, a quarter note E#4, and a half note D#4, with a bass staff accompaniment of eighth notes. The key signature has two flats (B-flat and E-flat).

100

Measures 100-102 of a musical score in 3/4 time, key of B-flat major. Measure 100 features a treble staff with a half note C#5, a quarter note B#4, and a half note A#4, with a bass staff accompaniment of eighth notes. Measure 101 continues the treble staff melody with a half note G#4, a quarter note F#4, and a half note E#4, while the bass staff has a half note D#4 and a quarter note C#4. Measure 102 shows a treble staff with a half note D#5, a quarter note C#5, and a half note B#4, with a bass staff accompaniment of eighth notes. The key signature has two flats (B-flat and E-flat).

102

Measures 102-104 of a musical score in 3/4 time, key of B-flat major. Measure 102 features a treble staff with a half note A#4, a quarter note G#4, and a half note F#4, with a bass staff accompaniment of eighth notes. Measure 103 continues the treble staff melody with a half note E#4, a quarter note D#4, and a half note C#4, while the bass staff has a half note B#3 and a quarter note A#3. Measure 104 shows a treble staff with a half note B#4, a quarter note A#4, and a half note G#4, with a bass staff accompaniment of eighth notes. The key signature has two flats (B-flat and E-flat).

104

Measures 104-106 of a musical score in E-flat major (three flats). The piece is in 4/4 time. Measure 104 features a complex piano introduction with multiple chords and a melodic line in the right hand. Measures 105 and 106 show a more straightforward melody in the right hand with block chords in the left hand.

107

Measures 107-110. The melody continues in the right hand, often with eighth-note patterns, while the left hand provides harmonic support with block chords. Measure 109 includes a triplet of eighth notes in the right hand.

111

Measures 111-114. The right hand features more intricate melodic lines, including a triplet in measure 111. The left hand continues with block chords, some of which are beamed together across measures.

115

Measures 115-117. The musical texture remains consistent with the previous system, featuring a melodic line in the right hand and block chords in the left hand. Measure 116 has a triplet of eighth notes in the right hand.

118

Measures 118-121, the final system on the page. The right hand has a melodic line with some grace notes. The left hand features block chords, with a final double bar line at the end of measure 121.