

# **Area F - "Wonder Panorama" (3)**

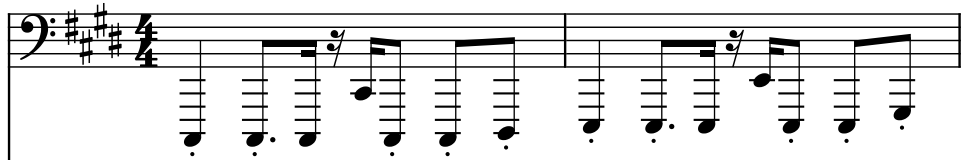
Composer: Ippo Yamada

Game: Mega Man ZX

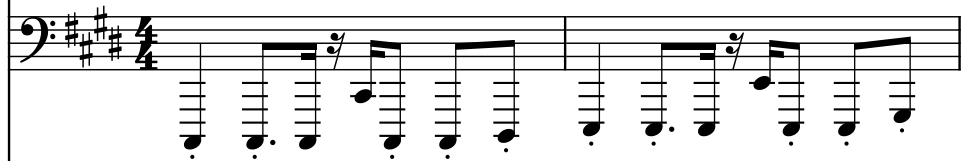
[pianogame.org](http://pianogame.org)

♩ = 125

Bass Synthesizer, Synth Bass 2



Bass Synthesizer, Synth Bass 2



Effect Synthesizer, Bass & Lead



3

Synth.



Synth.



Synth.



6

Synth.



Synth.



Synth.



9

Synth. Synth. Synth.

This system contains measures 9, 10, and 11. It features three staves, each labeled 'Synth.'. The top two staves are in bass clef with a key signature of three sharps (F#, C#, G#). The bottom staff is in treble clef with the same key signature. The music consists of a repeating rhythmic pattern of eighth and sixteenth notes, with some measures containing rests indicated by a slash and a dot.

12

Synth. Synth. Synth.


This system contains measures 12, 13, and 14. It features three staves, each labeled 'Synth.'. The top two staves are in bass clef with a key signature of three sharps (F#, C#, G#). The bottom staff is in treble clef with the same key signature. The music continues the repeating rhythmic pattern from the previous system.


15


Synth. Synth. Synth.

This system contains measures 15, 16, and 17. It features three staves, each labeled 'Synth.'. The top two staves are in bass clef with a key signature of three sharps (F#, C#, G#). The bottom staff is in treble clef with the same key signature. The music continues the repeating rhythmic pattern from the previous system.


18

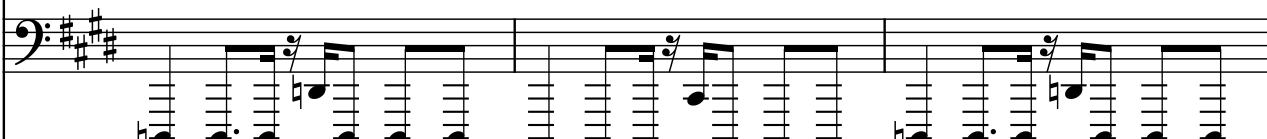
Synth. 


Synth. 

Synth. 


21


Synth. 


Synth. 

Synth. 

24

Synth. 

Synth. 

Synth. 

27

Synth.

Synth.

Synth.

Measures 27-29. The top two staves (bass clef) play a rhythmic pattern of eighth and sixteenth notes. The bottom staff (treble clef) plays a similar pattern, with a whole rest in measure 29.

30

Synth.

Synth.

Synth.

Measures 30-32. The top two staves (bass clef) play a rhythmic pattern of eighth and sixteenth notes. The bottom staff (treble clef) has a whole rest in measures 30 and 31.

33

Synth.

Synth.

Synth.

Measures 33-35. The top two staves (bass clef) play a rhythmic pattern of eighth and sixteenth notes. The bottom staff (treble clef) has a whole rest in measures 33 and 34.

36

Synth.

Synth.

Synth.

Measures 36-38. The top two staves (bass clef) play a rhythmic pattern of eighth and sixteenth notes. The bottom staff (treble clef) has a whole rest in measures 36 and 37.

39

Synth.

Synth.

Synth.

42

Synth.

Synth.

Synth.

45

Synth.

Synth.

Synth.

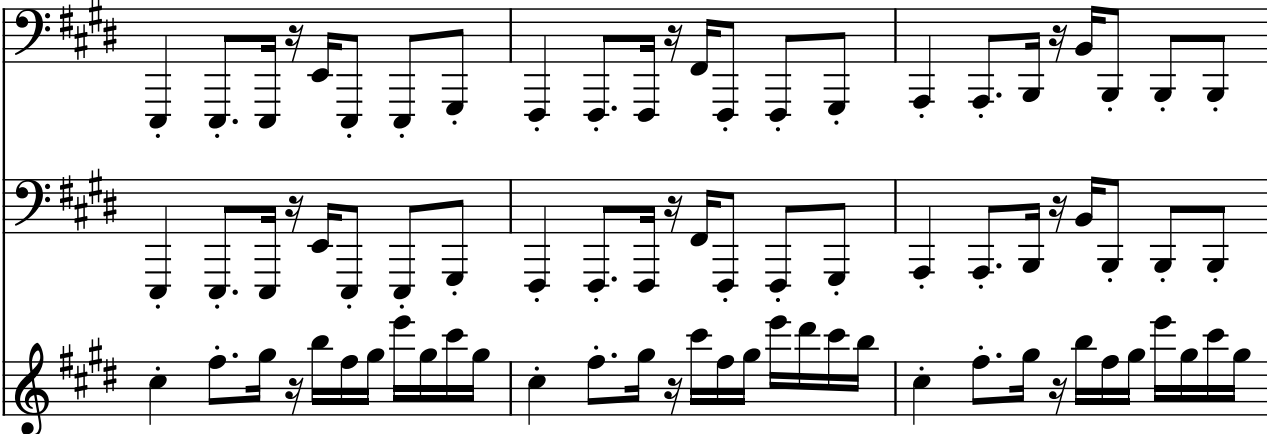
48

Synth.


Synth.

Synth.


51

Synth. 

54

Synth. 

57

Synth. 

60

Synth.

Synth.

Synth.

This system contains measures 60, 61, and 62. It features three staves of synthesizer parts. The top two staves are in bass clef with a key signature of three sharps (F#, C#, G#). The bottom staff is in treble clef with the same key signature. The music consists of a steady eighth-note accompaniment in the lower staves and a melodic line in the top staff that includes occasional sixteenth-note runs.

63

Synth.

Synth.

Synth.

This system contains measures 63, 64, and 65. The notation continues from the previous system, maintaining the same three-staff synthesizer arrangement in A major. The rhythmic and melodic patterns are consistent with the preceding measures.

66

Synth.

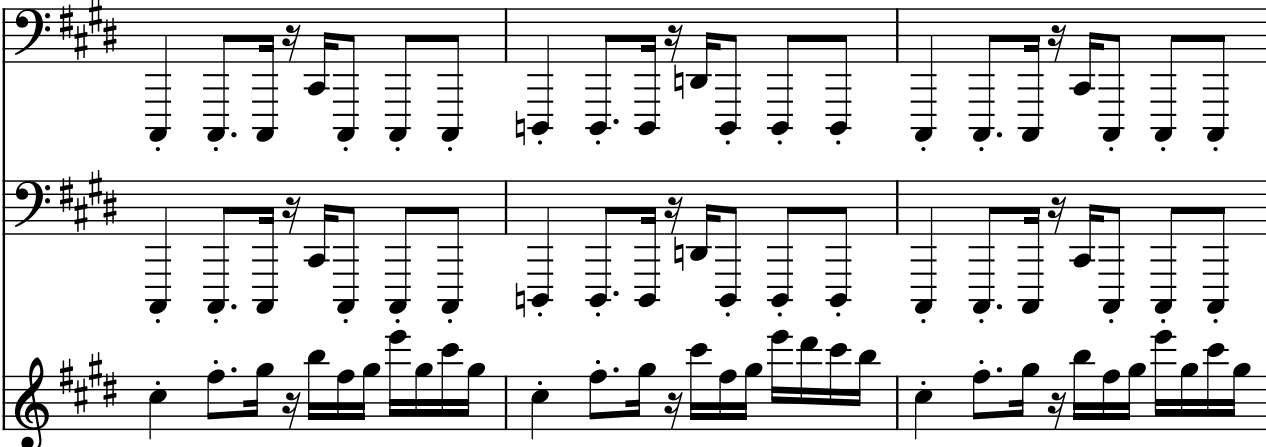
Synth.

Synth.

This system contains measures 66, 67, and 68. The musical notation continues across the three staves. In measure 67, the top two staves introduce some notes with natural signs (F natural and C natural), indicating a temporary modulation or chromatic movement from the key of A major.



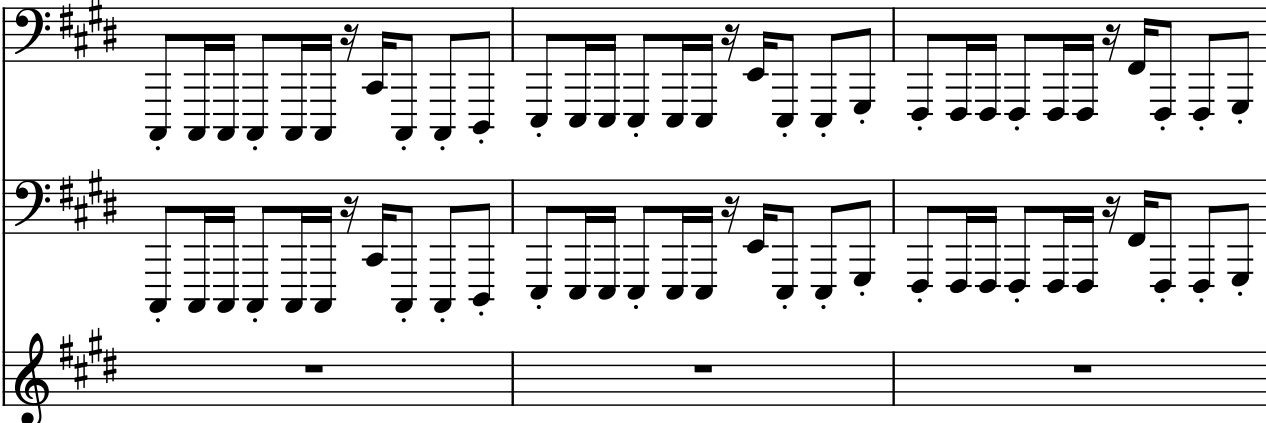
69

Synth.  This system contains measures 69, 70, and 71. It consists of three staves, each labeled 'Synth.'. The top two staves are in bass clef with a key signature of three sharps (F#, C#, G#). The bottom staff is in treble clef with the same key signature. All staves feature a repeating rhythmic pattern of eighth and sixteenth notes, with some measures containing rests.

72

Synth.  This system contains measures 72, 73, and 74. It consists of three staves, each labeled 'Synth.'. The top two staves are in bass clef with a key signature of three sharps. The bottom staff is in treble clef with the same key signature. The musical notation continues with the same rhythmic patterns as the previous system, ending with rests in the final measure of each staff.

75

Synth.  This system contains measures 75, 76, and 77. It consists of three staves, each labeled 'Synth.'. The top two staves are in bass clef with a key signature of three sharps. The bottom staff is in treble clef with the same key signature. Measures 75 and 76 show active musical notation, while measure 77 shows rests on all three staves.

78

Synth.

81

Synth.

84

Synth.

87

Synth.

90

Synth.

Synth.

Synth.

The image shows three staves of musical notation, each labeled 'Synth.' on the left. The top two staves are in bass clef and the bottom staff is in treble clef. All three staves share a key signature of three sharps (F#, C#, G#). The music is written in a sequence of notes and rests, with a double bar line and repeat dots at the end of each staff. The top two staves have a similar melodic line, while the bottom staff has a different melodic line.