

# Still Alive (XG)

Composer: Jonathan Coulton

Game: Portal

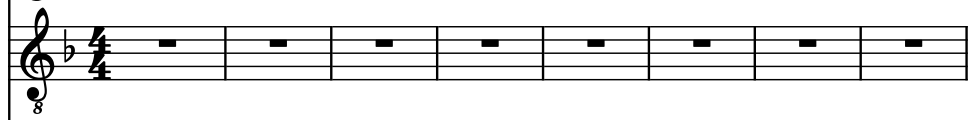
[pianogame.org](http://pianogame.org)

♩ = 120

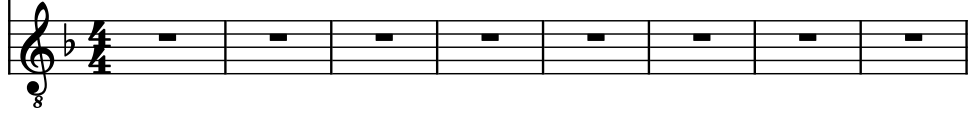
Mallet Synthesizer, sine lead



Contra Guitar, mute Guitar

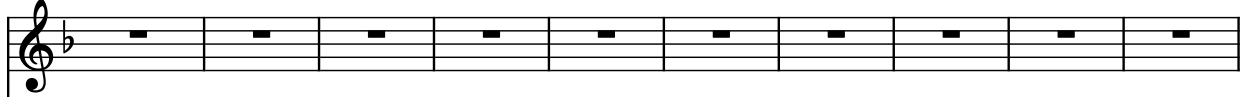


Acoustic Guitar, Strum Guitar?



9

Mal. Syn.



C. Guit.



Guit.



19

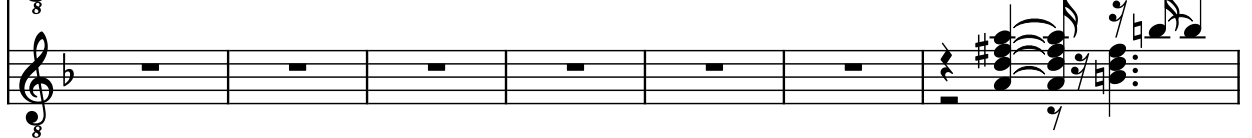
Mal. Syn.



C. Guit.



Guit.

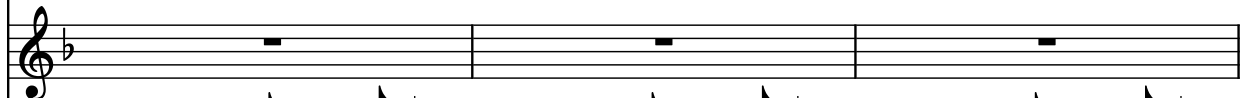


26

Mal. Syn.



C. Guit.

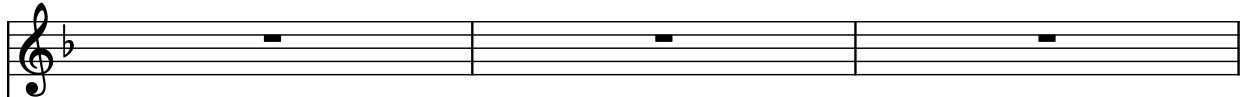


Guit.

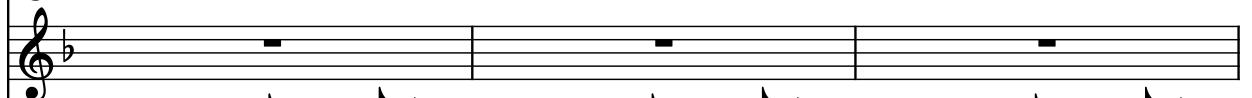


29

Mal. Syn.



C. Guit.



Guit.



32

Mal. Syn.

C. Guit.

Guit.

3

3

36

Mal. Syn.

C. Guit.

Guit.

3

3

39

Mal. Syn.

C. Guit.

Guit.

3

3

43

Mal. Syn.

C. Guit.

Guit.

3

47

Mal. Syn.

C. Guit.

Guit.

Measures 47-52: Mal. Syn. plays a melodic line. C. Guit. and Guit. have whole rests.

53

Mal. Syn.

C. Guit.

Guit.

Measures 53-62: All instruments have whole rests.

63

Mal. Syn.

C. Guit.

Guit.

Measures 63-65: Mal. Syn. and C. Guit. have whole rests. Guit. has a complex rhythmic pattern.

66

Mal. Syn.

C. Guit.

Guit.

Measures 66-69: Mal. Syn. has whole rests. C. Guit. has a complex rhythmic pattern. Guit. has a complex rhythmic pattern.

70

Mal. Syn.

C. Guit.

Guit.

Mal. Syn. measures 70-73: A melodic line in G major, starting on G4, moving up stepwise to D5, then down to G4, and finally to E4.

C. Guit. measures 70-73: A rhythmic pattern of eighth notes, starting on G4, moving up stepwise to D5, then down to G4, and finally to E4.

Guit. measures 70-73: A sustained bass line on G3.

74

Mal. Syn.

C. Guit.

Guit.

Mal. Syn. measures 74-77: A melodic line in G major, starting on G4, moving up stepwise to D5, then down to G4, and finally to E4.

C. Guit. measures 74-77: A sustained bass line on G3.

Guit. measures 74-77: A sustained bass line on G3.

81

Mal. Syn.

C. Guit.

Guit.

Mal. Syn. measures 81-83: A sustained bass line on G3.

C. Guit. measures 81-83: A sustained bass line on G3.

Guit. measures 81-83: A complex rhythmic pattern of eighth notes, starting on G4, moving up stepwise to D5, then down to G4, and finally to E4.

84

Mal. Syn.

C. Guit.

Guit.

Mal. Syn. measures 84-86: A sustained bass line on G3.

C. Guit. measures 84-86: A sustained bass line on G3.

Guit. measures 84-86: A complex rhythmic pattern of eighth notes, starting on G4, moving up stepwise to D5, then down to G4, and finally to E4.

87

Mal. Syn.

C. Guit.

Guit.

This musical score block contains three staves for measures 87 and 88. The top staff, labeled 'Mal. Syn.', is in treble clef with a key signature of one flat and contains whole rests for both measures. The middle staff, labeled 'C. Guit.', is also in treble clef with a key signature of one flat and contains whole rests for both measures. The bottom staff, labeled 'Guit.', is in treble clef with a key signature of one flat. Measure 87 begins with a whole rest, followed by a quarter note chord (F#4, A4, C5) with a slur, then a quarter note chord (F#4, A4, C5) with a slur and a 'y' mark below it. Measure 88 begins with a quarter note chord (F#4, A4, C5) with a slur, followed by a quarter note chord (F#4, A4, C5) with a slur and a 'y' mark below it. The score ends with a double bar line at the end of measure 88.