

# **Maze Game (SMS3 Remix)**

Composer: Yuzo Koshiro

Game: Master System BIOS

[pianogame.org](http://pianogame.org)

Sheet music for a piano piece, featuring a series of ascending and descending melodic lines with specific frequency values (Hz) indicated above the notes.

The first system shows a series of ascending notes with the following frequency values (Hz): 120, 119, 117, 115, 112, 110, 107, 103, 100, 98, 95, 93, 90, 86, 83, 82, 79, 77, 74, 70, 67, 65, 62, 60, and 20.

The second system shows a series of descending notes with the following frequency values (Hz): 90, 78, 59, 47, 30, 40, 56, 66, 82, 92, 107, and 119.

The third system shows a series of notes with the following frequency values (Hz): 109, 120, 109, 107, 105, 103, 101, 99, 97, 95, 93, 91, 89, 87, 85, 83, 81, 79, 77, 75, 73, 71, 69, 67, 65, 63, 61, 59, 57, 55, 53, 51, 49, 47, 45, 43, 41, 39, 37, 35, 33, 31, 29, 27, 25, 23, 21, 19, 17, 15, 13, 11, 9, 7, 5, 3, 1, 0.

The fourth system shows a series of notes with the following frequency values (Hz): 109, 120, 109, 107, 105, 103, 101, 99, 97, 95, 93, 91, 89, 87, 85, 83, 81, 79, 77, 75, 73, 71, 69, 67, 65, 63, 61, 59, 57, 55, 53, 51, 49, 47, 45, 43, 41, 39, 37, 35, 33, 31, 29, 27, 25, 23, 21, 19, 17, 15, 13, 11, 9, 7, 5, 3, 1, 0.

The fifth system shows a series of notes with the following frequency values (Hz): 109, 120, 109, 107, 105, 103, 101, 99, 97, 95, 93, 91, 89, 87, 85, 83, 81, 79, 77, 75, 73, 71, 69, 67, 65, 63, 61, 59, 57, 55, 53, 51, 49, 47, 45, 43, 41, 39, 37, 35, 33, 31, 29, 27, 25, 23, 21, 19, 17, 15, 13, 11, 9, 7, 5, 3, 1, 0.

The sixth system shows a series of notes with the following frequency values (Hz): 109, 120, 109, 107, 105, 103, 101, 99, 97, 95, 93, 91, 89, 87, 85, 83, 81, 79, 77, 75, 73, 71, 69, 67, 65, 63, 61, 59, 57, 55, 53, 51, 49, 47, 45, 43, 41, 39, 37, 35, 33, 31, 29, 27, 25, 23, 21, 19, 17, 15, 13, 11, 9, 7, 5, 3, 1, 0.

The seventh system shows a series of notes with the following frequency values (Hz): 109, 120, 109, 107, 105, 103, 101, 99, 97, 95, 93, 91, 89, 87, 85, 83, 81, 79, 77, 75, 73, 71, 69, 67, 65, 63, 61, 59, 57, 55, 53, 51, 49, 47, 45, 43, 41, 39, 37, 35, 33, 31, 29, 27, 25, 23, 21, 19, 17, 15, 13, 11, 9, 7, 5, 3, 1, 0.

The eighth system shows a series of notes with the following frequency values (Hz): 109, 120, 109, 107, 105, 103, 101, 99, 97, 95, 93, 91, 89, 87, 85, 83, 81, 79, 77, 75, 73, 71, 69, 67, 65, 63, 61, 59, 57, 55, 53, 51, 49, 47, 45, 43, 41, 39, 37, 35, 33, 31, 29, 27, 25, 23, 21, 19, 17, 15, 13, 11, 9, 7, 5, 3, 1, 0.

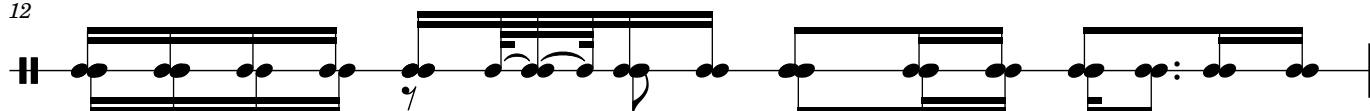
The ninth system shows a series of notes with the following frequency values (Hz): 109, 120, 109, 107, 105, 103, 101, 99, 97, 95, 93, 91, 89, 87, 85, 83, 81, 79, 77, 75, 73, 71, 69, 67, 65, 63, 61, 59, 57, 55, 53, 51, 49, 47, 45, 43, 41, 39, 37, 35, 33, 31, 29, 27, 25, 23, 21, 19, 17, 15, 13, 11, 9, 7, 5, 3, 1, 0.

The tenth system shows a series of notes with the following frequency values (Hz): 109, 120, 109, 107, 105, 103, 101, 99, 97, 95, 93, 91, 89, 87, 85, 83, 81, 79, 77, 75, 73, 71, 69, 67, 65, 63, 61, 59, 57, 55, 53, 51, 49, 47, 45, 43, 41, 39, 37, 35, 33, 31, 29, 27, 25, 23, 21, 19, 17, 15, 13, 11, 9, 7, 5, 3, 1, 0.

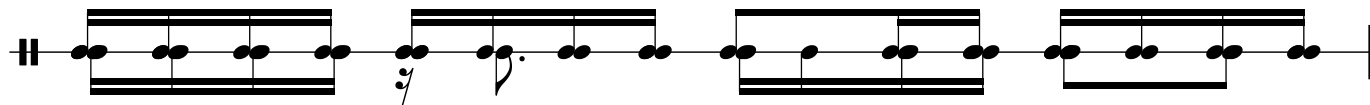
The eleventh system shows a series of notes with the following frequency values (Hz): 109, 120, 109, 107, 105, 103, 101, 99, 97, 95, 93, 91, 89, 87, 85, 83, 81, 79, 77, 75, 73, 71, 69, 67, 65, 63, 61, 59, 57, 55, 53, 51, 49, 47, 45, 43, 41, 39, 37, 35, 33, 31, 29, 27, 25, 23, 21, 19, 17, 15, 13, 11, 9, 7, 5, 3, 1, 0.

2

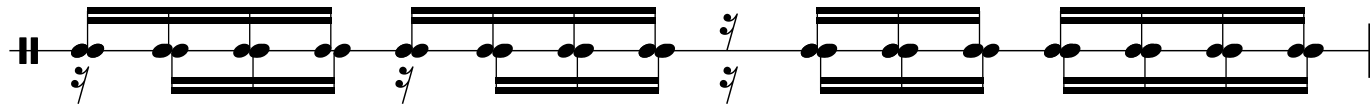
12



13



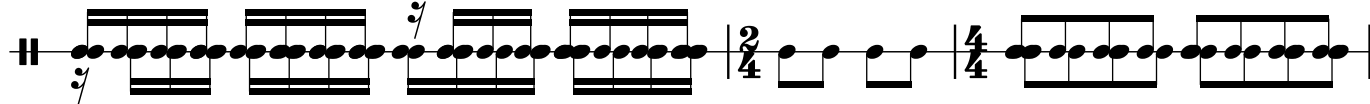
14



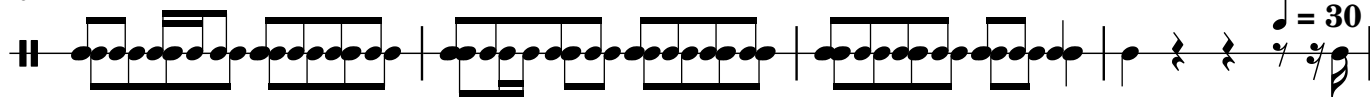
15



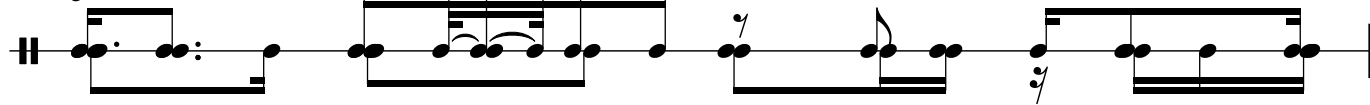
16



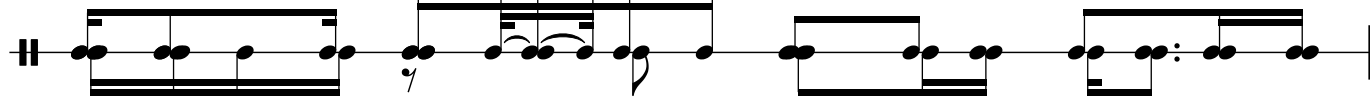
19



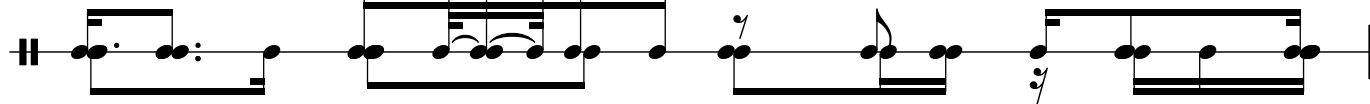
23 ♩ = 120



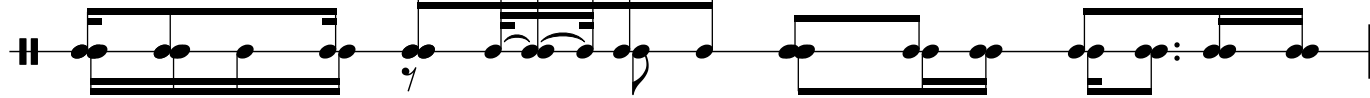
24



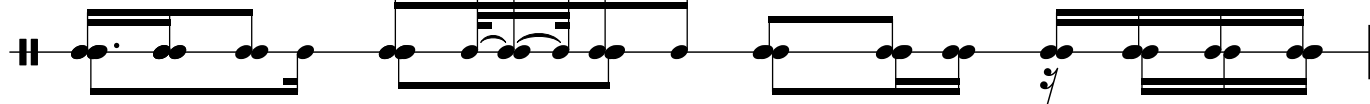
25



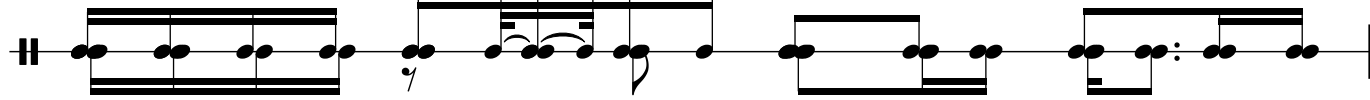
26



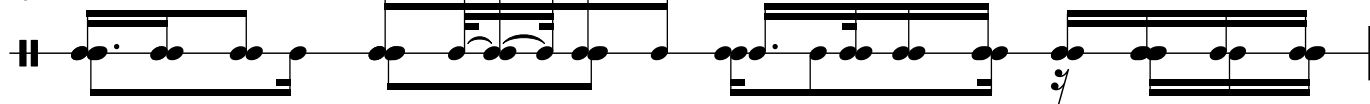
27

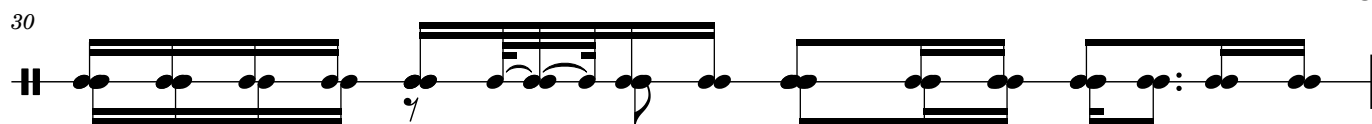



28

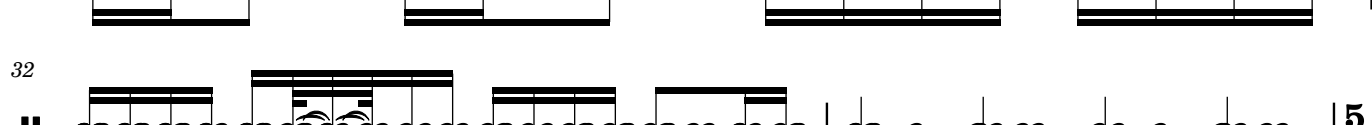


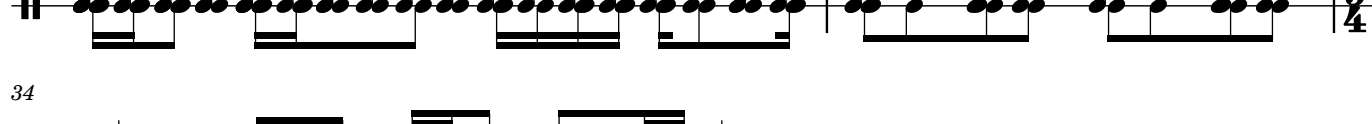
29




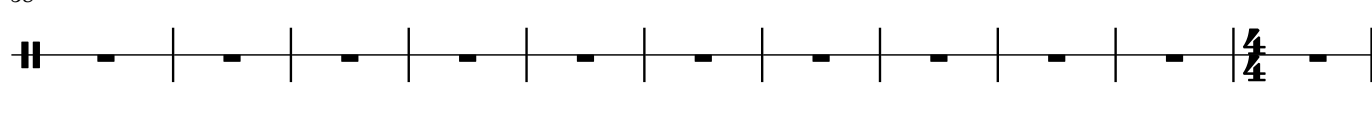
30 

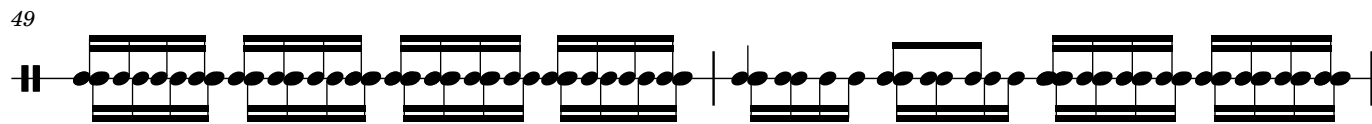
31 

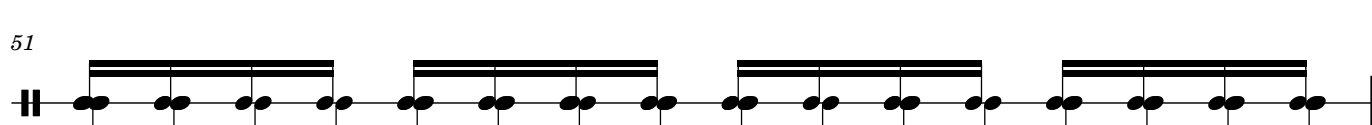
32 

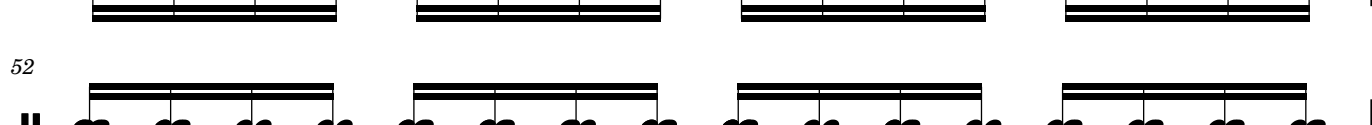
34 

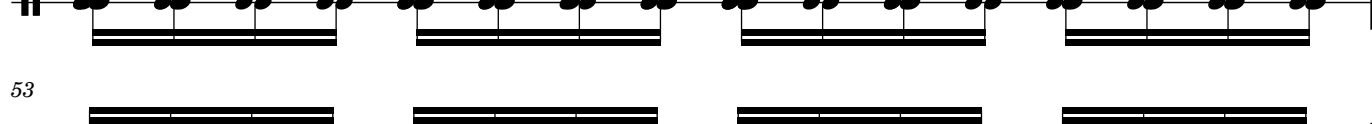
38 

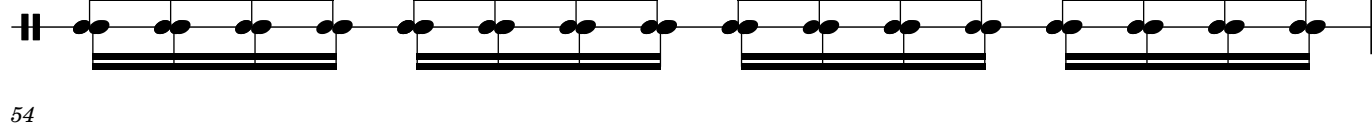
49 

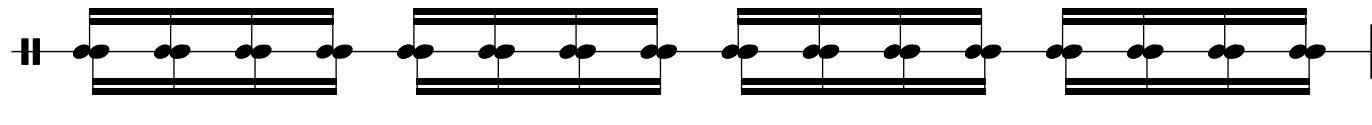
51 

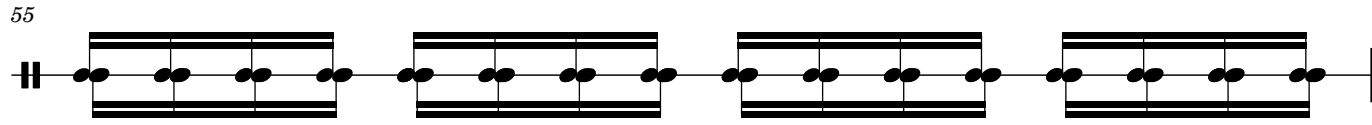
52 

53 

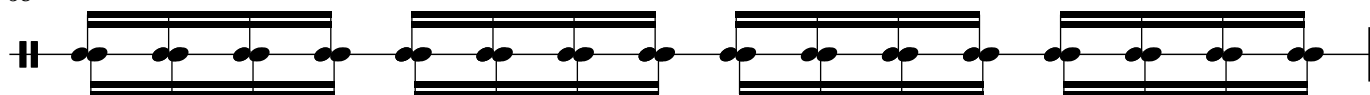
54 

55 

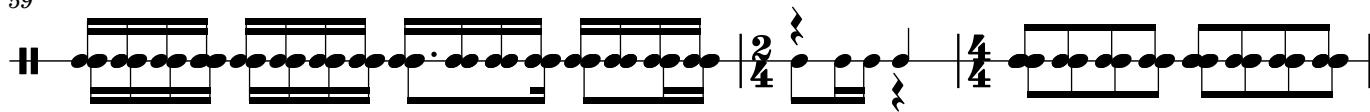
56 

57 

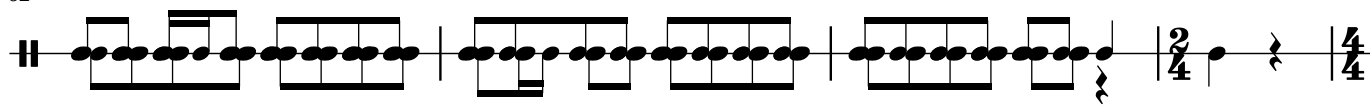
4  
58



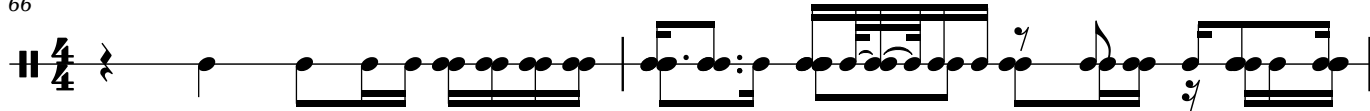
59



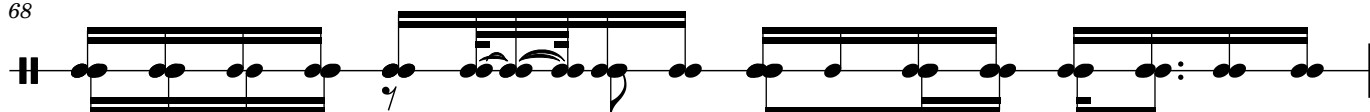
62



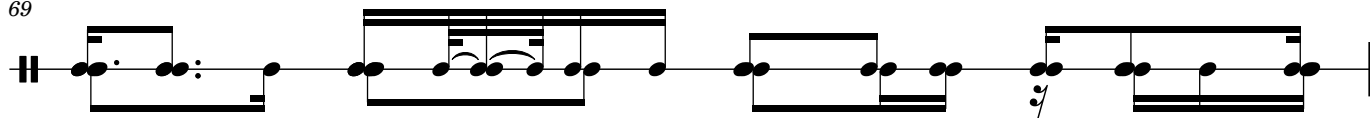
66



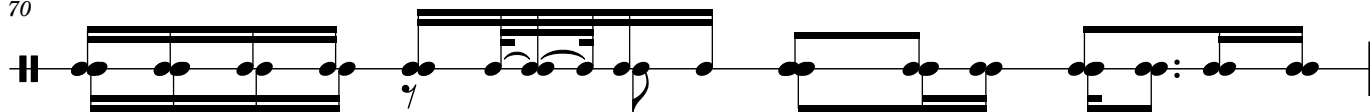
68



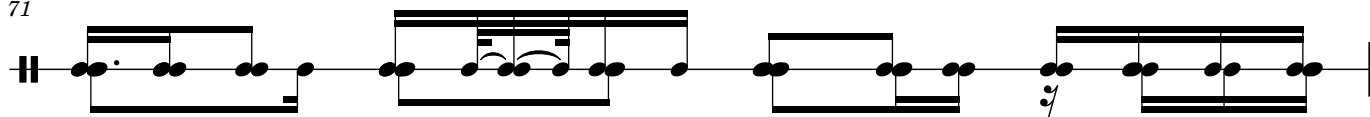
69



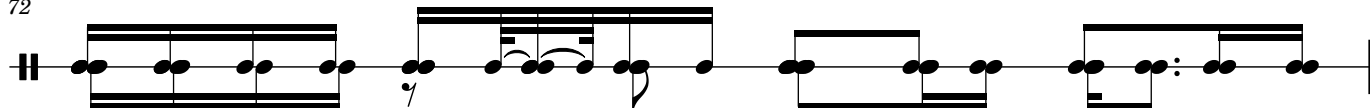
70



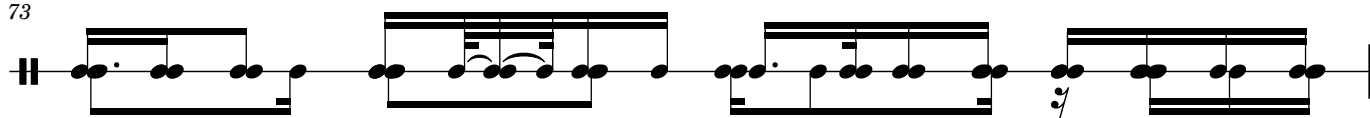
71



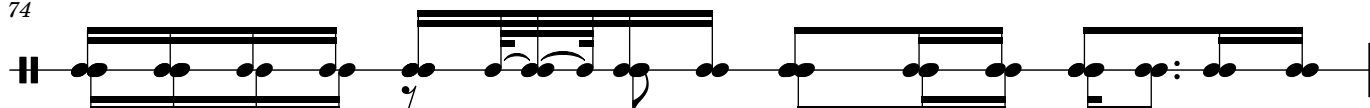
72



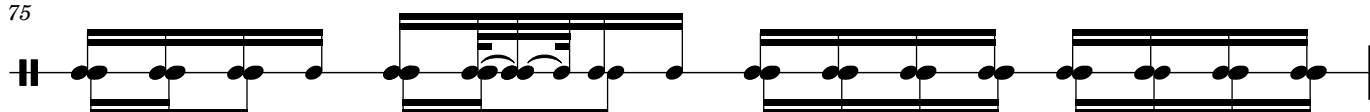
73



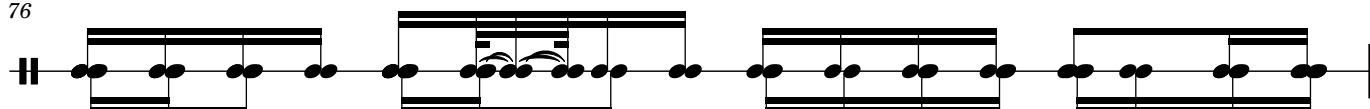
74



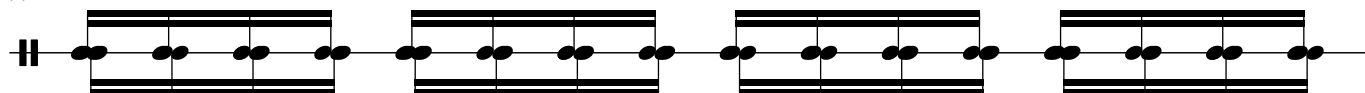
75



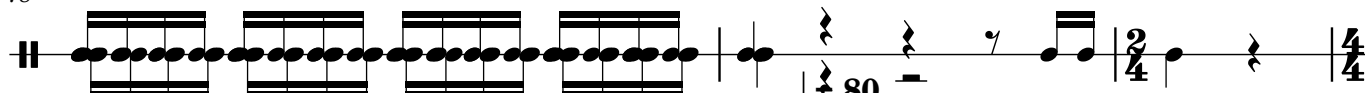
76



77



78



♩ = 60

♩ = 62

♩ = 65

♩ = 67

♩ = 69

♩ = 73

♩ = 76

♩ = 78

♩ = 81

♩ = 83

♩ = 85

♩ = 89

♩ = 92

♩ = 94

♩ = 97

♩ = 99

♩ = 101

♩ = 105

♩ = 108

♩ = 110

♩ = 113

♩ = 115

♩ = 117

81 ♩ = 119

