

Opening Title - "Angels' Fear" (XG)

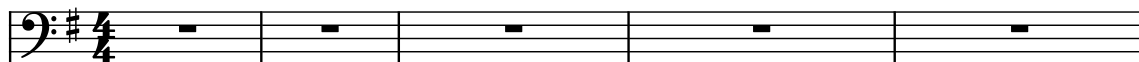
Composer: Hiroki Kikuta

Game: Secret of Mana

pianogame.org

$\text{♩} = 74$

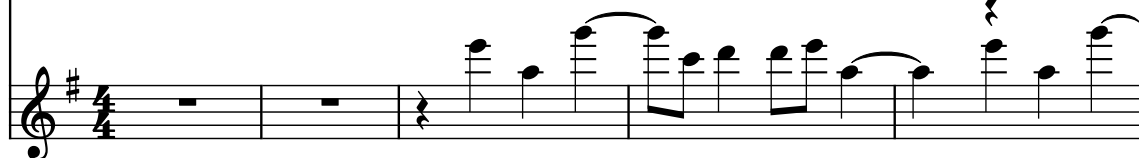
Bass Synthesizer



Violas (section)

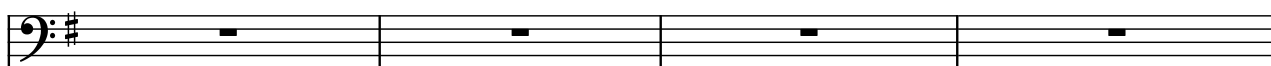


Piano

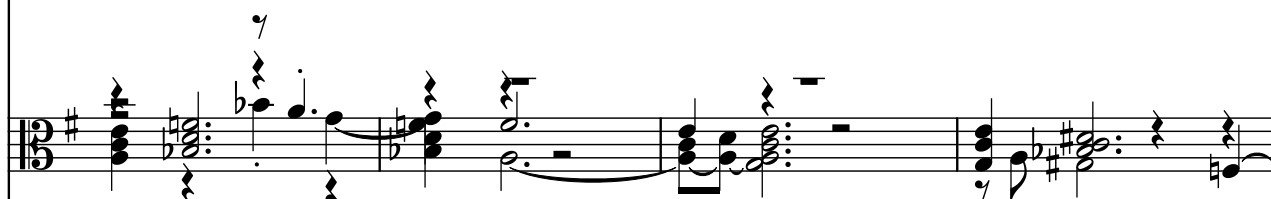


6

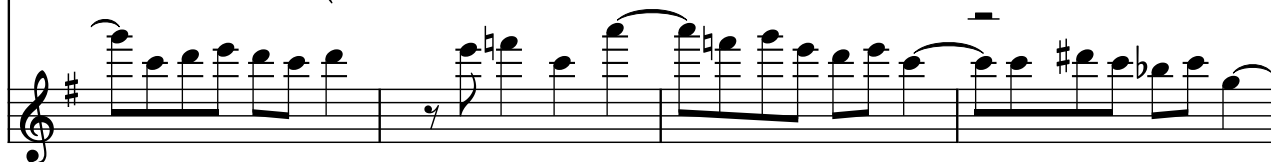
Synth.



Vlas.



Pno.

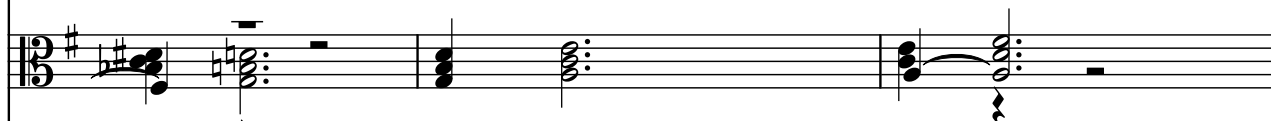


10

Synth.



Vlas.



Pno.



13

Synth.

Vlas.

Pno.

Measures 13-15. Synth. (Bass) has a melodic line with eighth and sixteenth notes. Vlas. (Bass) has a chordal accompaniment with some grace notes. Pno. (Treble) has a steady eighth-note accompaniment.

16

Synth.

Vlas.

Pno.

Measures 16-17. Synth. (Bass) has a melodic line with eighth and sixteenth notes. Vlas. (Bass) has a chordal accompaniment with some grace notes. Pno. (Treble) has a steady eighth-note accompaniment.

18

Synth.

Vlas.

Pno.

Measures 18-20. Synth. (Bass) has a melodic line with eighth and sixteenth notes. Vlas. (Bass) has a chordal accompaniment with some grace notes. Pno. (Treble) has a steady eighth-note accompaniment.

3 3 3 3 3

20

Synth. Vlas. Pno.

3 3 3 3 3 3 3 3

22

Synth. Vlas. Pno.

3 3 3 3 3 3 3 3

24

Synth. Vlas. Pno.

3 3 3 3 3 3 3 3

26

Synth.

Vlas.

Pno.

3 3 3 3 3

30

Synth.

Vlas.

Pno.