

# Crush Crawfish (3)

Composer: Kinuyo Yamashita

Game: Mega Man X3

[pianogame.org](http://pianogame.org)

♩ = 198

Fretless Electric Bass, Fretless Bass

Bass Guitar, Electric Bass (Pick)

Electric Guitar, Electric Guitar (Jazz)

2

Frtl. El. B.

B. Guit.

El. Guit.

4

Frtl. El. B.

B. Guit.

El. Guit.

6

Frtl. El. B.

B. Guit.

El. Guit.

8

Frtl. El. B.

B. Guit.

El. Guit.

3 3 3 3

13

Frtrl. El. B.

B. Guit.

El. Guit.



17

Frtrl. El. B.

B. Guit.

El. Guit.



21

Frtrl. El. B.

B. Guit.

El. Guit.



25

Frtrl. El. B.

B. Guit.

El. Guit.



29

Frtrl. El. B.

B. Guit.

El. Guit.



32

Frtrl. El. B.

B. Guit.

El. Guit.

Measures 32-35: Frtrl. El. B. and El. Guit. are silent. B. Guit. plays a bass line in E-flat major. The line consists of eighth and quarter notes, with a key signature of three flats (E-flat major).

36

Frtrl. El. B.

B. Guit.

El. Guit.

Measures 36-39: Frtrl. El. B. and El. Guit. are silent. B. Guit. continues the bass line in E-flat major, featuring eighth and quarter notes.

40

Frtrl. El. B.

B. Guit.

El. Guit.

Measures 40-43: Frtrl. El. B. and El. Guit. are silent. B. Guit. continues the bass line in E-flat major, featuring eighth and quarter notes.

44

Frtrl. El. B.

B. Guit.

El. Guit.

Measures 44-47: Frtrl. El. B. and El. Guit. are silent. B. Guit. continues the bass line in E-flat major, featuring eighth and quarter notes.

48

Frtrl. El. B.

B. Guit.

El. Guit.

Measures 48-51: Frtrl. El. B. and El. Guit. are silent. B. Guit. continues the bass line in E-flat major, featuring eighth and quarter notes.

52

Frtrl. El. B.

B. Guit.

El. Guit.

8

55

Frtrl. El. B.

B. Guit.

El. Guit.

8

59

Frtrl. El. B.

B. Guit.

El. Guit.

8

63

Frtrl. El. B.

B. Guit.

El. Guit.

8

67

Frtrl. El. B.

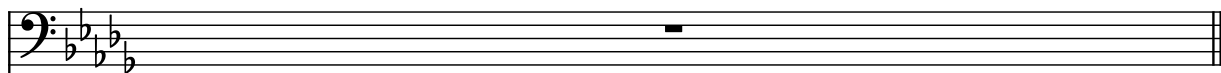
B. Guit.

El. Guit.

8

70

Frtl. El. B.



B. Guit.

