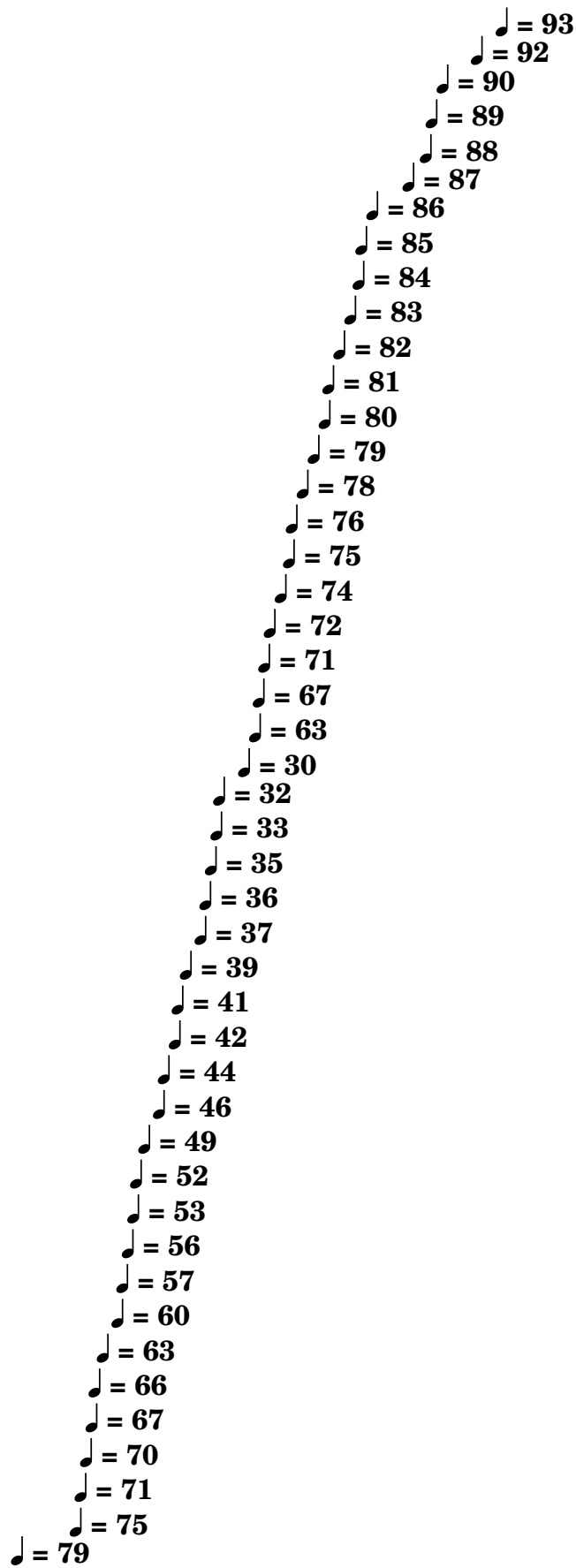


Epilogue

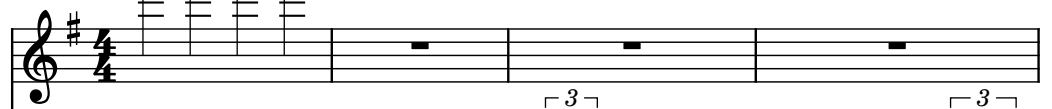
Composer: Hitoshi Sakimoto

Game: Final Fantasy Tactics

pianogame.org



Violins (section), strings 1



Violins (section), strings 2



Violas (section), strings 3



The image displays a musical score for three staves: Violins (Vlins.), Violins (Vlins.), and Viola (Vlas.). The key signature is one sharp (F#). The score begins with a measure number '5' above the first staff. The first two staves (Vlins.) contain a melodic line, while the third staff (Vlas.) contains a harmonic line. The melodic line is composed of 33 numbered notes, starting from measure 5 and continuing through measure 38. The notes are numbered 5 through 38, with the first note in measure 5 being a half note G4 (F#4), and the last note in measure 38 being a half note G5 (F#5). The notes are written in a sequence that follows a specific interval pattern, with some notes being beamed together. The Viola part consists of a series of chords and single notes that support the melodic line. The first staff (Vlins.) has a treble clef and a key signature of one sharp. The second staff (Vlins.) also has a treble clef and a key signature of one sharp. The third staff (Vlas.) has an alto clef and a key signature of one sharp. The notes are numbered 5 through 38, with the first note in measure 5 being a half note G4 (F#4), and the last note in measure 38 being a half note G5 (F#5). The notes are written in a sequence that follows a specific interval pattern, with some notes being beamed together. The Viola part consists of a series of chords and single notes that support the melodic line.

5

Vlins.

Vlins.

Vlas.

Notes (from measure 5):

- 5 = 82
- 6 = 81
- 7 = 80
- 8 = 79
- 9 = 76
- 10 = 75
- 11 = 74
- 12 = 72
- 13 = 70
- 14 = 60
- 15 = 61
- 16 = 62
- 17 = 63
- 18 = 65
- 19 = 66
- 20 = 67
- 21 = 68
- 22 = 70
- 23 = 72
- 24 = 74
- 25 = 75
- 26 = 76
- 27 = 78
- 28 = 79
- 29 = 80
- 30 = 81
- 31 = 83
- 32 = 84
- 33 = 85
- 34 = 86
- 35 = 87
- 36 = 88
- 37 = 89
- 38 = 90
- 39 = 91
- 40 = 92

10 $\text{♩} = 86$ $\text{♩} = 85$ $\text{♩} = 87$

Vlns.

Vlns.

Vlas.

$\text{♩} = 49$
 $\text{♩} = 53$
 $\text{♩} = 56$
 $\text{♩} = 61$
 $\text{♩} = 63$
 $\text{♩} = 68$
 $\text{♩} = 73$
 $\text{♩} = 76$
 $\text{♩} = 78$
 $\text{♩} = 81$
 $\text{♩} = 82$
 $\text{♩} = 85$
 $\text{♩} = 88$

$\text{♩} = 72$
 $\text{♩} = 70$
 $\text{♩} = 68$
 $\text{♩} = 67$
 $\text{♩} = 66$
 $\text{♩} = 64$
 $\text{♩} = 62$
 $\text{♩} = 60$
 $\text{♩} = 59$

$\text{♩} = 63$
 $\text{♩} = 62$
 $\text{♩} = 63$
 $\text{♩} = 64$
 $\text{♩} = 65$
 $\text{♩} = 66$
 $\text{♩} = 67$
 $\text{♩} = 68$
 $\text{♩} = 69$
 $\text{♩} = 70$
 $\text{♩} = 71$

14

Vlns.

Vlns.

Vlas.

19 $\text{♩} = 64$ $\text{♩} = 65$ $\text{♩} = 66$ $\text{♩} = 67$

Vlns.

Vlns.

Vlas.

22

Vlns.

Vlns.

Vlas.

3 3 3 3 3 3 3 3 3 3 3 3

25

Vlns.

Vlns.

Vlas.

3 3 3 3 3 3 3 3 3 3 3 3

28

Vlns.

Vlns.

Vlas.

3 3 3 3 3 3 3 3

Musical score for Violins (Vlins.) and Violas (Vlas.) starting at measure 32. The score is written in treble clef for Vlins. and bass clef for Vlas., with a key signature of one sharp (F#). The tempo is marked as 65 beats per minute. The score includes a series of measures with notes and rests, and a final measure with a double bar line.

The tempo markings are:

- ♩ = 65
- ♩ = 68
- ♩ = 73
- ♩ = 76
- ♩ = 79
- ♩ = 82
- ♩ = 84
- ♩ = 86
- ♩ = 90
- ♩ = 93
- ♩ = 95
- ♩ = 99
- ♩ = 101
- ♩ = 103
- ♩ = 107
- ♩ = 110
- ♩ = 112
- ♩ = 115
- ♩ = 117
- ♩ = 119
- ♩ = 124
- ♩ = 125
- ♩ = 126
- ♩ = 127
- ♩ = 128
- ♩ = 129
- ♩ = 130
- ♩ = 131
- ♩ = 132
- ♩ = 133
- ♩ = 134
- ♩ = 135
- ♩ = 136
- ♩ = 137
- ♩ = 138
- ♩ = 139
- ♩ = 140
- ♩ = 141
- ♩ = 142
- ♩ = 143
- ♩ = 144
- ♩ = 145
- ♩ = 146
- ♩ = 147
- ♩ = 148
- ♩ = 149

The score is divided into three staves: Vlins. (Violins), Vlins. (Violins), and Vlas. (Violas). The first staff (Vlins.) shows a series of notes and rests, with a final measure containing a double bar line. The second staff (Vlins.) shows a series of notes and rests, with a final measure containing a double bar line. The third staff (Vlas.) shows a series of notes and rests, with a final measure containing a double bar line.