

Stage 4: Block 4-1 (2)

Composer: Masanori Adachi

Game: Super Castlevania IV

pianogame.org

$\text{♩} = 191$

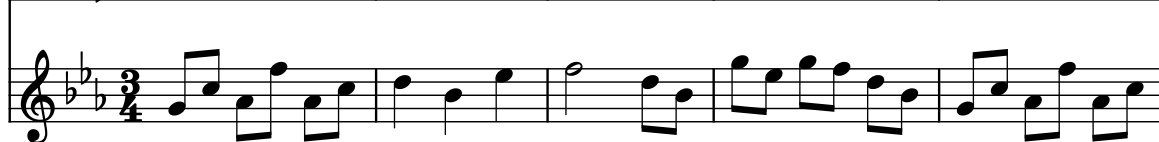
Bass Guitar, 1.



Bass Guitar, 2.

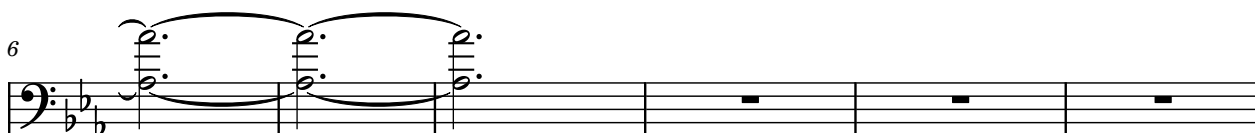


Grand Piano, 3.

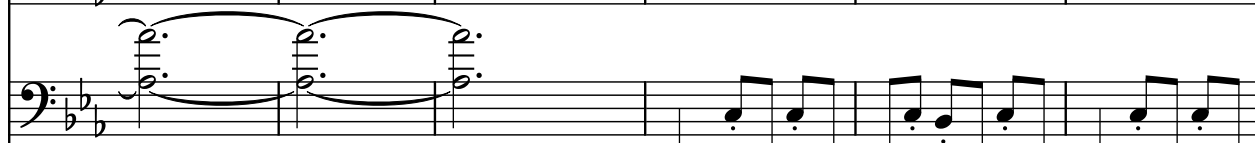


6

B. Guit.



B. Guit.

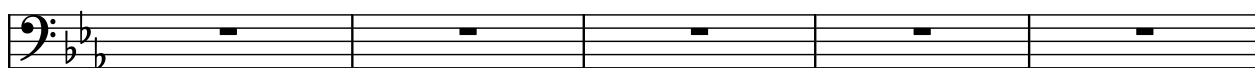


Pno.



12

B. Guit.



B. Guit.

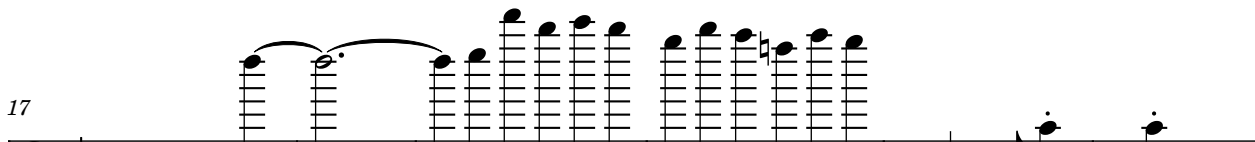


Pno.

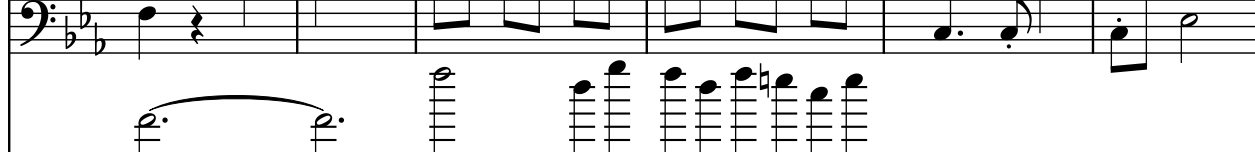


17

B. Guit.




B. Guit.




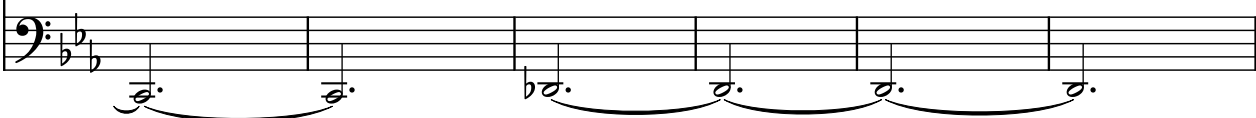
Pno.




23


B. Guit. 

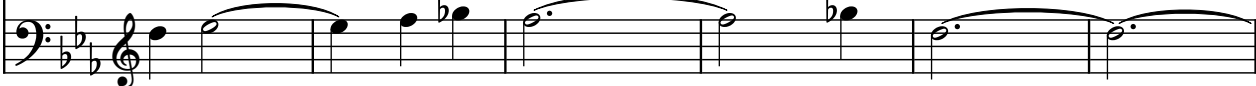
B. Guit. 

Pno. 


29


B. Guit. 

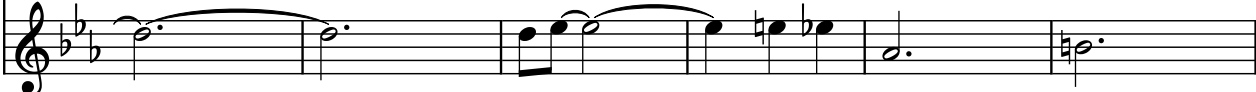
B. Guit. 

Pno. 


35


B. Guit. 

B. Guit. 

Pno. 

41

B. Guit. 

B. Guit. 

Pno. 


47


B. Guit. 

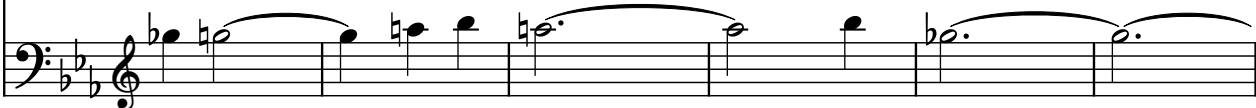
B. Guit. 

Pno. 

53

B. Guit. 

B. Guit. 

Pno. 

59

B. Guit. 

B. Guit. 

Pno. 

65

B. Guit. 

B. Guit. 

Pno. 

71

B. Guit. 

B. Guit. 

Pno. 

76

B. Guit. 

B. Guit. 

Pno. 

86

91

96

101

The image shows a musical score for the song "The Sound of Silence" by Simon & Garfunkel. It features two staves: "B. Guit." (Bass Guitar) and "Pno." (Piano). The key signature is B-flat major (two flats) and the time signature is 4/4. The B. Guit. staff has five measures of whole rests. The Pno. staff contains the following notes across five measures:

- Measure 1: F2, C3, F2, C3
- Measure 2: F2, C3, F2, C3
- Measure 3: F2, C3, F2, C3
- Measure 4: F2, C3, F2, C3
- Measure 5: F2, C3, F2, C3

106

B. Guit.

B. Guit.

Pno.

111

B. Guit.

B. Guit.

Pno.

117

B. Guit.

B. Guit.

Pno.

122

B. Guit.

B. Guit.

Pno.

128

B. Guit.

B. Guit.

Pno.

Two bass guitars and piano. The piano part has a melodic line in the right hand and a sustained bass line in the left hand.

134

B. Guit.

B. Guit.

Pno.

Two bass guitars and piano. The piano part continues the melodic line in the right hand and the sustained bass line in the left hand.

140

B. Guit.

B. Guit.

Pno.

Two bass guitars and piano. The piano part continues the melodic line in the right hand and the sustained bass line in the left hand.

146



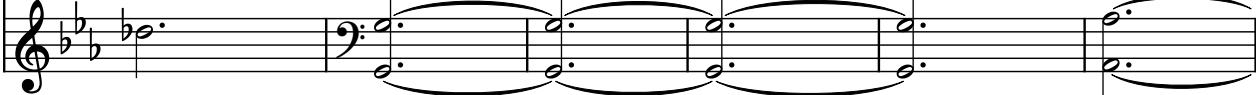
B. Guit.


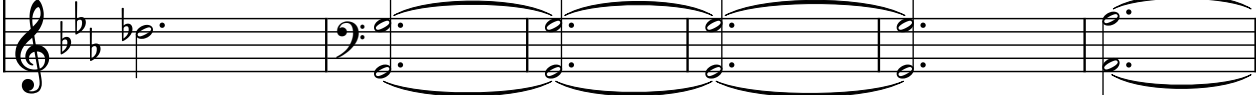
B. Guit.

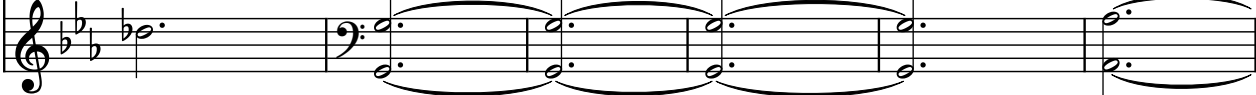
Pno.

Two bass guitars and piano. The piano part continues the melodic line in the right hand and the sustained bass line in the left hand.

152

B. Guit.   

B. Guit.  

Pno. 

158


B. Guit.   


B. Guit.  

Pno. 



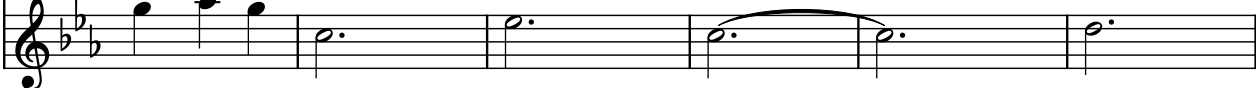
164


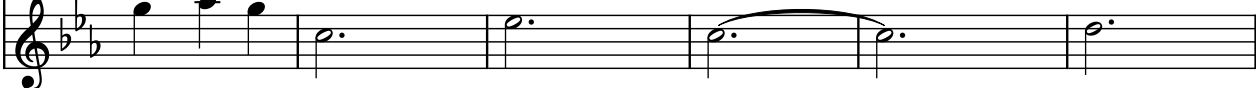
B. Guit.   

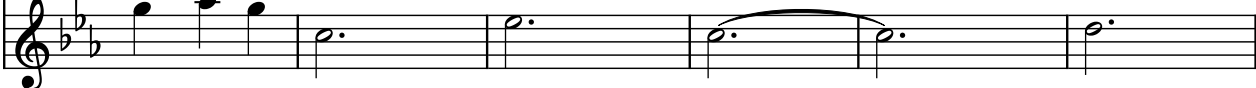
B. Guit.  

Pno. 

170

B. Guit.   

B. Guit.  

Pno. 

176

B. Guit.   

B. Guit.  

Pno. 

186

191

196

201

The image shows a musical score for the song "The Sound of Silence" by Simon & Garfunkel. It features two staves: "B. Guit." (Bass Guitar) and "Pno." (Piano). The key signature is B-flat major (two flats) and the time signature is 4/4. The B. Guit. staff has five measures of whole rests. The Pno. staff has five measures of music. The first measure of the Pno. staff has a treble clef, while the subsequent measures have a bass clef. The piano part consists of chords in the right hand and single notes in the left hand. A slur is present over the fourth measure of the piano part.

206

B. Guit. 

B. Guit. 

Pno. 

211

B. Guit. 

B. Guit. 

Pno. 

216

B. Guit. 

B. Guit. 

Pno. 

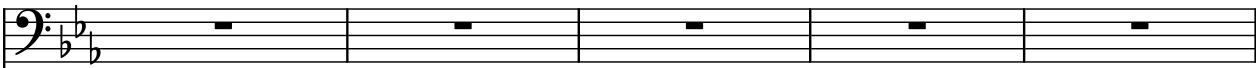
222


B. Guit. 

B. Guit. 

Pno. 

228

B. Guit. 

B. Guit. 

Pno. 


233


B. Guit. 

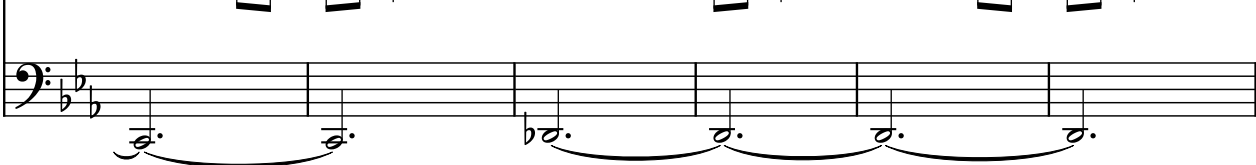
B. Guit. 

Pno. 


239


B. Guit. 

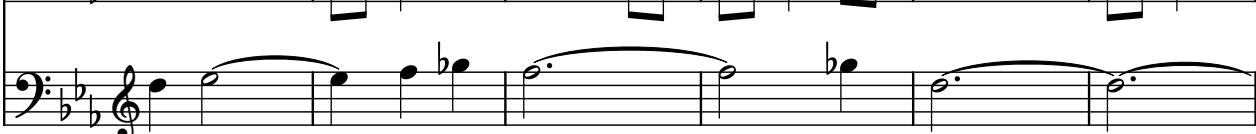
B. Guit. 

Pno. 


245


B. Guit. 


B. Guit. 

Pno. 


251


B. Guit. 

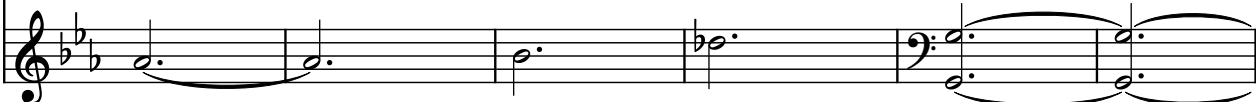
B. Guit. 

Pno. 

257

B. Guit. 

B. Guit. 

Pno. 


263

B. Guit. 

B. Guit. 

Pno. 

269

B. Guit. 

B. Guit. 

Pno. 

275

B. Guit. 

B. Guit. 

Pno. 

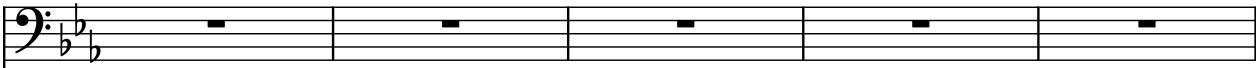
281


B. Guit. 


B. Guit. 

Pno. 

287

B. Guit. 

B. Guit. 

Pno. 

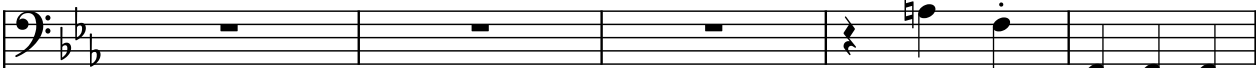
292


B. Guit. 


B. Guit. 

Pno. 

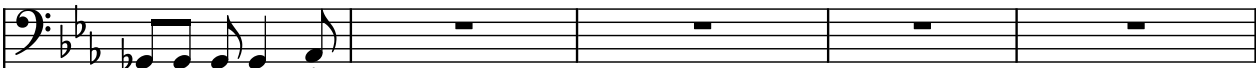
297


B. Guit. 


B. Guit. 

Pno. 

302


B. Guit. 


B. Guit. 

Pno. 

307

B. Guit. 

B. Guit. 

Pno. 

312

B. Guit. 

B. Guit. 

Pno. 

317

B. Guit. 

B. Guit. 

Pno. 

322

B. Guit. 

B. Guit. 

Pno. 