

# Katamari Stars (3)

Composer: Yuu Miyake

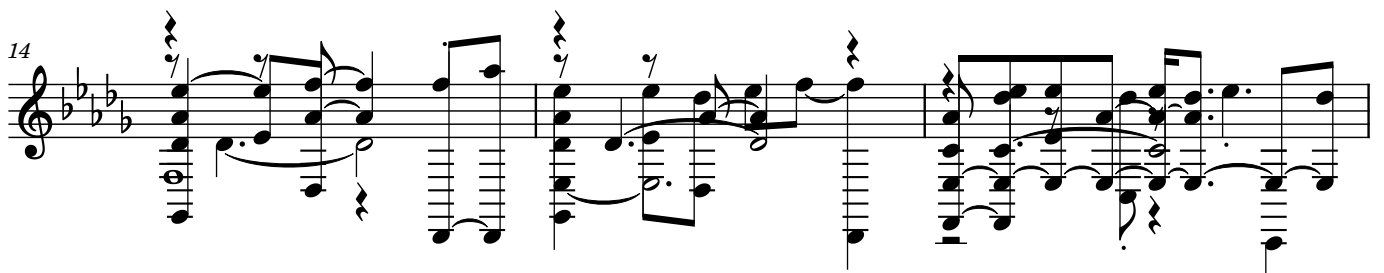
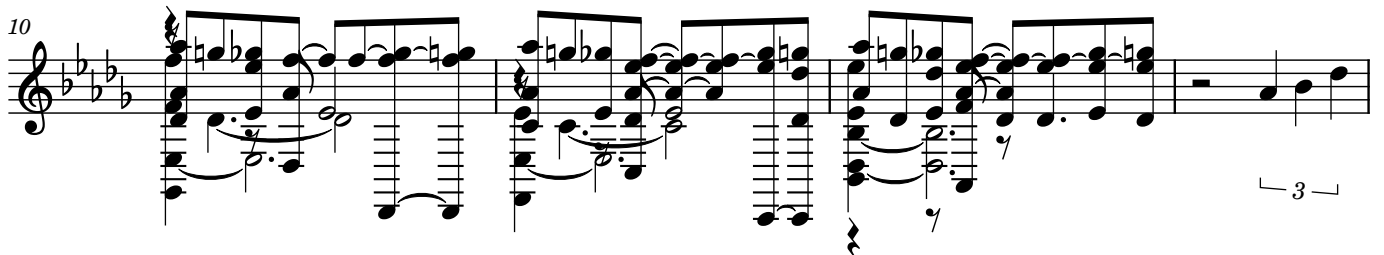
Game: Katamari Damacy

[pianogame.org](http://pianogame.org)

♩ = 120



♩ = 83



23

Measures 23-25 of a musical score in E-flat major (three flats). Measure 23 features a treble clef and a complex melody with many beamed sixteenth notes. Measure 24 continues this melody. Measure 25 shows a triplet of eighth notes in the treble and a triplet of eighth notes in the bass, both marked with a '3' and a bracket.

26

Measures 26-28 of the musical score. Measure 26 has a treble clef and a melody with many beamed sixteenth notes. Measure 27 continues the melody. Measure 28 features a triplet of eighth notes in the treble and a triplet of eighth notes in the bass, both marked with a '3' and a bracket.

29

Measures 29-31 of the musical score. Measure 29 has a treble clef and a melody with many beamed sixteenth notes. Measure 30 continues the melody. Measure 31 features a triplet of eighth notes in the treble and a triplet of eighth notes in the bass, both marked with a '3' and a bracket.

32

Measures 32-34 of the musical score. Measure 32 has a treble clef and a melody with many beamed sixteenth notes. Measure 33 continues the melody. Measure 34 features a triplet of eighth notes in the treble and a triplet of eighth notes in the bass, both marked with a '3' and a bracket. A tempo marking  $\text{♩} = 166$  is present.

35

Measures 35-37 of the musical score. Measure 35 has a bass clef and a melody with many beamed sixteenth notes. Measure 36 continues the melody. Measure 37 features a triplet of eighth notes in the treble and a triplet of eighth notes in the bass, both marked with a '3' and a bracket. A tempo marking  $\text{♩} = 83\%$  is present.

38

Measures 38-40 of the musical score. Measure 38 has a treble clef and a melody with many beamed sixteenth notes. Measure 39 continues the melody. Measure 40 features a triplet of eighth notes in the treble and a triplet of eighth notes in the bass, both marked with a '3' and a bracket.

41

Measures 41-43 of a musical score in G major (one sharp). The music is written for a grand staff (treble and bass clefs). Measure 41 features a complex texture with many beamed sixteenth notes in both hands. Measure 42 continues this texture. Measure 43 shows a change in the bass line with more sustained notes and some grace notes.

44

Measures 44-46 of the musical score. Measure 44 has a similar complex texture to the previous measures. Measure 45 shows a continuation of the fast-moving lines. Measure 46 features a more active bass line with many beamed notes and a grace note.

47

Measures 47-49 of the musical score. Measure 47 continues the complex texture. Measure 48 shows a continuation of the fast-moving lines. Measure 49 features a more active bass line with many beamed notes and a grace note.

50

Measures 50-52 of the musical score. Measure 50 features a complex texture with many beamed sixteenth notes in both hands. Measure 51 continues this texture. Measure 52 shows a change in the bass line with more sustained notes and some grace notes.