

Mine Cart Ride

Composer: Allister Brimble

Game: Fantastic Adventures of Dizzy, The

pianogame.org

$\text{♩} = 128$

Large Drum Kit, by Zagro

Bass Guitar, www.zagronia.com

6-str. Electric Bass, Mine Cart Ride

3

D. Kit

B. Guit.

El. B.

7

D. Kit

B. Guit.

El. B.

11

D. Kit

B. Guit.

El. B.

15

D. Kit

B. Guit.

El. B.

18

D. Kit

B. Guit.

El. B.

21

D. Kit

B. Guit.

El. B.

24

D. Kit

B. Guit.

El. B.

27

D. Kit

B. Guit.

El. B.

Measures 27-29. The D. Kit part features a repeating eighth-note pattern with 'x' marks above the notes. The B. Guit. part has a bass line with a key signature change from one flat to two flats. The El. B. part features a complex bass line with many beamed notes and accidentals.

30

D. Kit

B. Guit.

El. B.

Measures 30-32. The D. Kit part continues with the same repeating eighth-note pattern. The B. Guit. part continues with the bass line. The El. B. part continues with the complex bass line.

33

D. Kit

B. Guit.

El. B.

Measures 33-35. The D. Kit part continues with the same repeating eighth-note pattern. The B. Guit. part continues with the bass line. The El. B. part continues with the complex bass line.

36

D. Kit

B. Guit.

El. B.

Measures 36-38. The D. Kit part continues with the same repeating eighth-note pattern. The B. Guit. part continues with the bass line. The El. B. part continues with the complex bass line.

39

D. Kit

B. Guit.

El. B.

Measures 39-41. D. Kit: Snare drum on 2 and 4, hi-hat on 1 and 3. B. Guit.: Bass line in E minor, eighth notes. El. B.: Electric bass line in E minor, eighth notes with triplets.

42

D. Kit

B. Guit.

El. B.

Measures 42-44. D. Kit: Snare drum on 2 and 4, hi-hat on 1 and 3. B. Guit.: Bass line in E minor, eighth notes. El. B.: Electric bass line in E minor, eighth notes with triplets.

45

D. Kit

B. Guit.

El. B.

Measures 45-47. D. Kit: Snare drum on 2 and 4, hi-hat on 1 and 3. B. Guit.: Bass line in E minor, eighth notes. El. B.: Electric bass line in E minor, eighth notes with triplets.

48

D. Kit

B. Guit.

El. B.

Measures 48-50. D. Kit: Snare drum on 2 and 4, hi-hat on 1 and 3. B. Guit.: Bass line in E minor, eighth notes. El. B.: Electric bass line in E minor, eighth notes with triplets.

51

D. Kit

B. Guit.

El. B.

This image shows the musical score for measures 51, 52, and 53 of the song 'The Sound of Silence'. The score is written for three instruments: Drums (D. Kit), Bass Guitar (B. Guit.), and Electric Bass (El. B.). The Drums part is in 4/4 time, with a steady beat of eighth notes. The Bass Guitar part is in 4/4 time, with a steady beat of eighth notes. The Electric Bass part is in 4/4 time, with a steady beat of eighth notes. The key signature is one flat (Bb), and the time signature is 4/4. The score is written in a standard musical notation style, with notes and rests on a five-line staff. The Drums part uses a treble clef and a key signature of one flat. The Bass Guitar and Electric Bass parts use a bass clef and a key signature of one flat. The Drums part is marked with a 'D' and a 'K'. The Bass Guitar part is marked with a 'B' and a 'G'. The Electric Bass part is marked with an 'E' and a 'B'.

54

D. Kit

B. Guit.

El. B.

57

D. Kit

B. Guit.

El. B.

60

D. Kit

B. Guit.

El. B.

63

D. Kit

B. Guit.

El. B.

Measures 63-66: D. Kit plays a steady eighth-note pattern with 'x' marks above. B. Guit. plays a descending eighth-note line. El. B. plays a descending eighth-note line with 'x' marks above.

67

D. Kit

B. Guit.

El. B.

Measures 67-70: D. Kit plays a steady eighth-note pattern with 'x' marks above. B. Guit. plays a descending eighth-note line. El. B. plays a descending eighth-note line with 'x' marks above.

71

D. Kit

B. Guit.

El. B.

Measures 71-74: D. Kit plays a steady eighth-note pattern with 'x' marks above. B. Guit. plays a descending eighth-note line. El. B. plays a descending eighth-note line with 'x' marks above.

75

D. Kit

B. Guit.

El. B.

Measures 75-78: D. Kit plays a steady eighth-note pattern with 'x' marks above. B. Guit. plays a descending eighth-note line. El. B. plays a descending eighth-note line with 'x' marks above.

79

D. Kit

B. Guit.

El. B.

82

D. Kit

B. Guit.

El. B.

85

D. Kit

B. Guit.

El. B.

88

D. Kit

B. Guit.

El. B.

91

D. Kit

B. Guit.

El. B.

94

D. Kit

B. Guit.

El. B.

97

D. Kit

B. Guit.

El. B.

100

D. Kit

B. Guit.

El. B.

103

D. Kit

B. Guit.

El. B.

Measures 103-105. D. Kit: Snare drum pattern with eighth notes and rests. B. Guit.: Bass line with eighth notes, including flats and sharps. El. B.: Electric bass line with eighth notes and rests, including flats and sharps.

106

D. Kit

B. Guit.

El. B.

Measures 106-108. D. Kit: Snare drum pattern with eighth notes and rests. B. Guit.: Bass line with eighth notes, including flats and sharps. El. B.: Electric bass line with eighth notes and rests, including flats and sharps.

109

D. Kit

B. Guit.

El. B.

Measures 109-111. D. Kit: Snare drum pattern with eighth notes and rests. B. Guit.: Bass line with eighth notes, including flats and sharps. El. B.: Electric bass line with eighth notes and rests, including flats and sharps.

112

D. Kit

B. Guit.

El. B.

Measures 112-114. D. Kit: Snare drum pattern with eighth notes and rests. B. Guit.: Bass line with eighth notes, including flats and sharps. El. B.: Electric bass line with eighth notes and rests, including flats and sharps.

115

D. Kit

B. Guit.

El. B.

This musical score segment contains three staves labeled 'D. Kit', 'B. Guit.', and 'El. B.'. The 'D. Kit' staff uses a treble clef and a key signature of one flat, featuring eighth-note patterns with 'x' marks above them. The 'B. Guit.' staff uses a bass clef and the same key signature, showing a sequence of notes with some accidentals. The 'El. B.' staff also uses a bass clef and features dense sixteenth-note chords. Measure numbers 115, 116, and 117 are indicated at the top of the system.

118

D. Kit

B. Guit.

El. B.

121

D. Kit

B. Guit.

El. B.

This image shows the musical score for measures 121, 122, and 123 of the song 'The Sound of Silence' by Simon & Garfunkel. The score is arranged for three instruments: Drums (D. Kit), Bass Guitar (B. Guit.), and Electric Bass (El. B.). The Drums part features a consistent pattern of snare and bass drum hits. The Bass Guitar and Electric Bass parts play a melodic line that moves from a low register in measure 121 to a higher register in measure 122, and then returns to a lower register in measure 123. The key signature is one flat (B-flat major or D minor), and the time signature is 4/4.

124

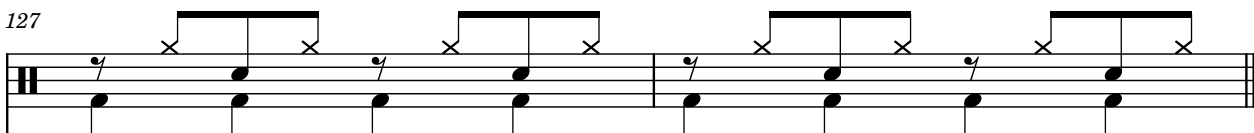
D. Kit

B. Guit.

El. B.

127

D. Kit



B. Guit.



El. B.

