

Mr. X's Castle (XG) (v1.1)

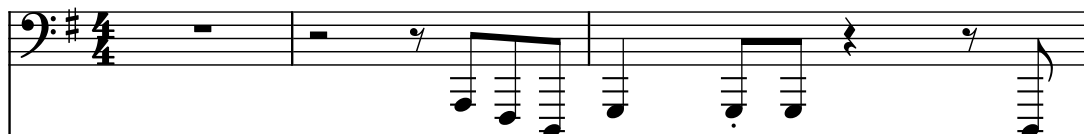
Composer: Yuko Takehara

Game: Mega Man VI

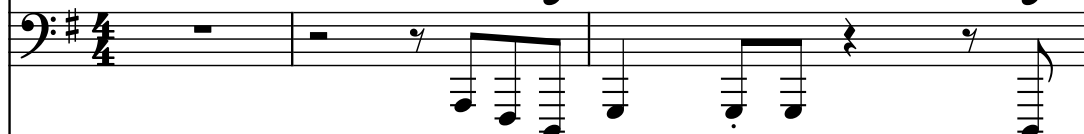
pianogame.org

♩ = 165

Bass Synthesizer, XG



Bass Synthesizer, XG

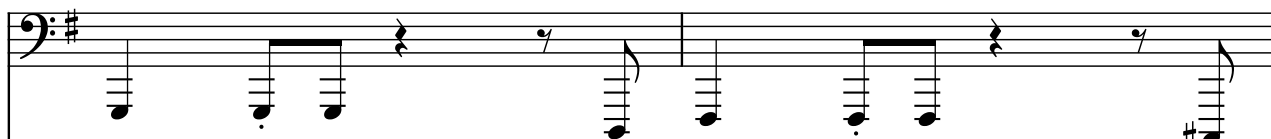


Saw Synthesizer, XG

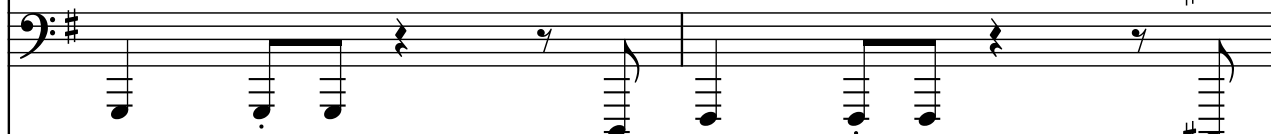


4

Synth.



Synth.



Synth.



6

Synth.



Synth.

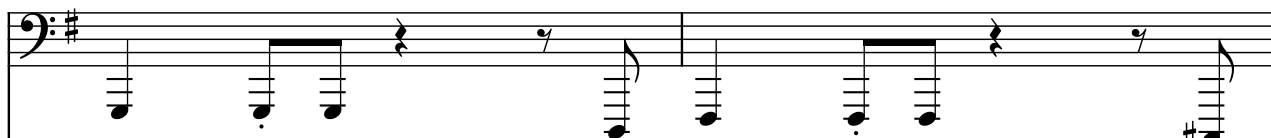


Synth.

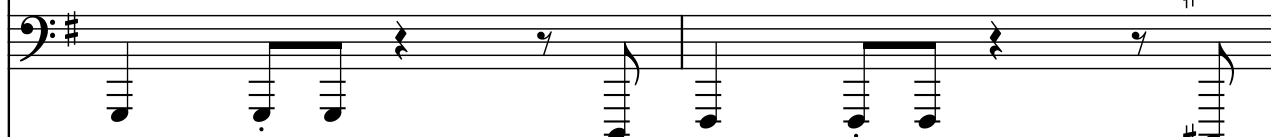


8

Synth.



Synth.



Synth.



10

Synth.

Synth.

Synth.



This system contains measures 10 and 11. It features three staves, each labeled 'Synth.' on the left. All staves are in the key of D major (one sharp) and use a bass clef. The top two staves have a single melodic line with eighth and quarter notes, including ties and rests. The bottom staff has a more complex texture, with a treble clef for the first half of the measure and a bass clef for the second half, featuring sixteenth-note runs and chords.

12

Synth.

Synth.

Synth.



This system contains measures 12 and 13. It features three staves, each labeled 'Synth.' on the left. The top two staves continue the melodic lines from the previous system, with some notes marked with a sharp sign. The bottom staff continues its complex texture with sixteenth-note patterns and chords, also featuring a sharp sign on one of the notes.

14

Synth.

Synth.

Synth.



This system contains measures 14 and 15. It features three staves, each labeled 'Synth.' on the left. The top two staves continue the melodic lines. The bottom staff continues its complex texture, featuring a treble clef for the first half of the measure and a bass clef for the second half, with various note values and a sharp sign.

16

Three synth tracks in G major, 4/4 time. The top two tracks are in the bass clef and play a simple melody. The bottom track is in the bass clef and plays a complex, fast-paced arpeggiated pattern.

18

Synth.
 Synth.
 Synth.

20

22

Synth. Synth. Synth.

26

28


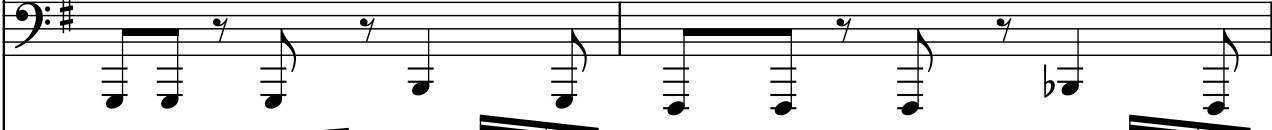

30

Synth.

Synth.

Synth.

32

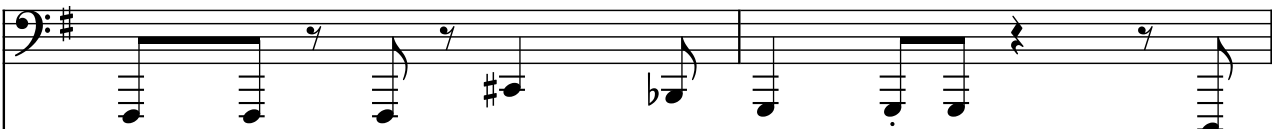
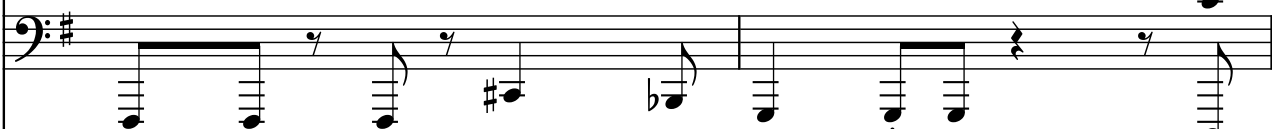
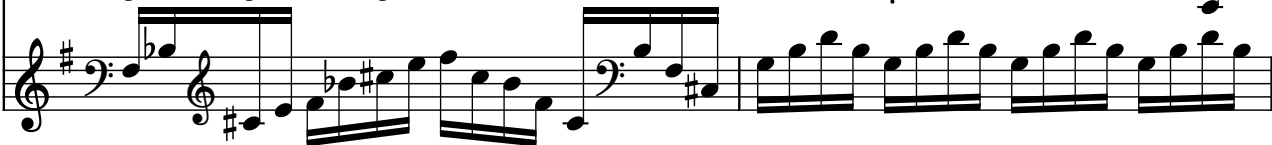
Synth.   

Musical notation for measures 32-33, Synth. part 1. The staff is in bass clef with a key signature of one sharp (F#). It contains eighth notes and rests.

Musical notation for measures 32-33, Synth. part 2. The staff is in bass clef with a key signature of one sharp (F#). It contains eighth notes and rests.

Musical notation for measures 32-33, Synth. part 3. The staff is in treble clef with a key signature of one sharp (F#). It contains eighth notes and rests.

34

Synth.   

Musical notation for measures 34-35, Synth. part 1. The staff is in bass clef with a key signature of one sharp (F#). It contains eighth notes and rests.

Musical notation for measures 34-35, Synth. part 2. The staff is in bass clef with a key signature of one sharp (F#). It contains eighth notes and rests.

Musical notation for measures 34-35, Synth. part 3. The staff is in treble clef with a key signature of one sharp (F#). It contains eighth notes and rests.

36

Synth.   

Musical notation for measures 36-37, Synth. part 1. The staff is in bass clef with a key signature of one sharp (F#). It contains eighth notes and rests.

Musical notation for measures 36-37, Synth. part 2. The staff is in bass clef with a key signature of one sharp (F#). It contains eighth notes and rests.

Musical notation for measures 36-37, Synth. part 3. The staff is in bass clef with a key signature of one sharp (F#). It contains eighth notes and rests.

38

Synth.   

Musical notation for measures 38-39, Synth. part 1. The staff is in bass clef with a key signature of one sharp (F#). It contains eighth notes and rests.

Musical notation for measures 38-39, Synth. part 2. The staff is in bass clef with a key signature of one sharp (F#). It contains eighth notes and rests.

Musical notation for measures 38-39, Synth. part 3. The staff is in bass clef with a key signature of one sharp (F#). It contains eighth notes and rests.

40

Synth.

Synth.

Synth.

This system contains measures 40 and 41. The top two staves are labeled 'Synth.' and feature a bass clef with a key signature of one sharp (F#). They play a rhythmic pattern of eighth notes, with rests in the second half of each measure. The bottom staff, also labeled 'Synth.', plays a continuous eighth-note arpeggiated pattern across both measures. The key signature changes to two sharps (F# and C#) at the start of measure 41.

42

Synth.

Synth.

Synth.

This system contains measures 42 and 43. The top two staves are labeled 'Synth.' and feature a bass clef with a key signature of one sharp (F#). They play a rhythmic pattern of eighth notes, with rests in the second half of each measure. The bottom staff, also labeled 'Synth.', plays a continuous eighth-note arpeggiated pattern across both measures. The key signature changes to two sharps (F# and C#) at the start of measure 43.

44

Synth.

Synth.

Synth.

This system contains measures 44 and 45. The top two staves are labeled 'Synth.' and feature a bass clef with a key signature of one sharp (F#). They play a rhythmic pattern of eighth notes, with rests in the second half of each measure. The bottom staff, also labeled 'Synth.', plays a continuous eighth-note arpeggiated pattern across both measures. The key signature changes to two sharps (F# and C#) at the start of measure 45.

46

Synth.

Synth.

Synth.

48

Synth.

Synth.

Synth.

50

Synth.

Synth.

Synth.

52

Synth.

Synth.

Synth.

54

Synth.

Synth.

Synth.

Measures 54-55. The top two staves (bass clef, one sharp) play a rhythmic pattern of eighth and sixteenth notes. The bottom staff (treble clef, one sharp) plays a more complex melodic line with various accidentals.

56

Synth.

Synth.

Synth.

Measures 56-57. The top two staves (bass clef, one sharp) continue the rhythmic pattern. The bottom staff (treble clef, one sharp) continues the melodic line with various accidentals.

58

Synth.

Synth.

Synth.

Measures 58-59. The top two staves (bass clef, one sharp) continue the rhythmic pattern. The bottom staff (treble clef, one sharp) continues the melodic line with various accidentals.

60

Synth.

Synth.

Synth.

Measures 60-61. The top two staves (bass clef, one sharp) continue the rhythmic pattern. The bottom staff (treble clef, one sharp) continues the melodic line with various accidentals.

62

Synth.

Synth.

Synth.

64

Synth.

Synth.

Synth.

66

Synth.

Synth.

Synth.