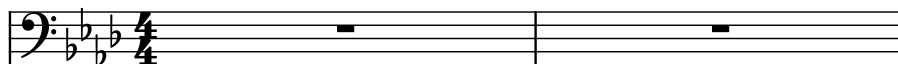


Area 1 (2)

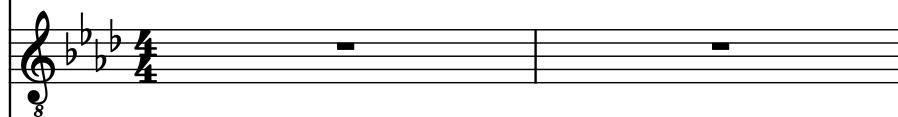
Composer: Harumi Fujita
Game: Bionic Commando
pianogame.org

♩ = 160

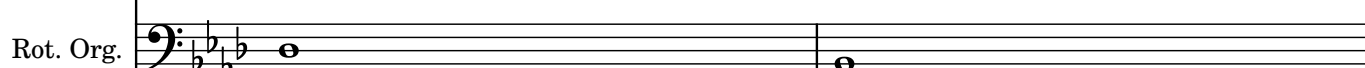
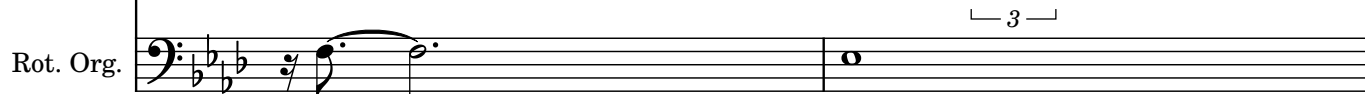
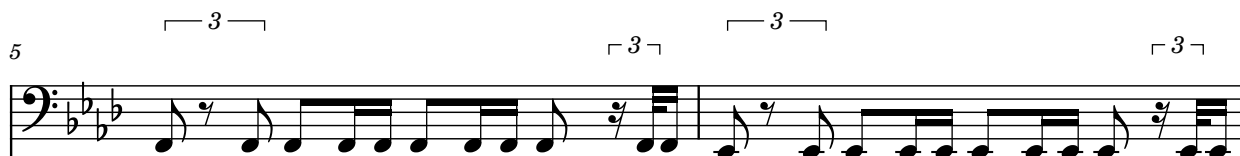
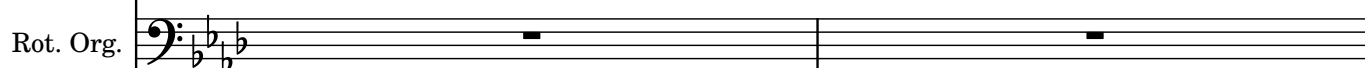
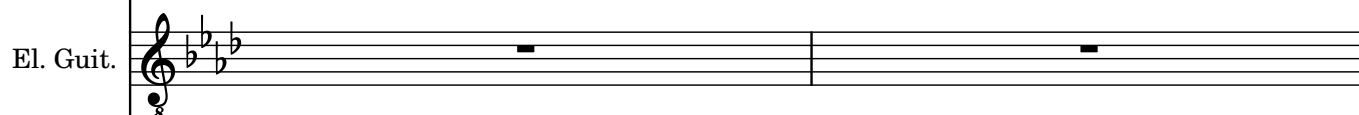
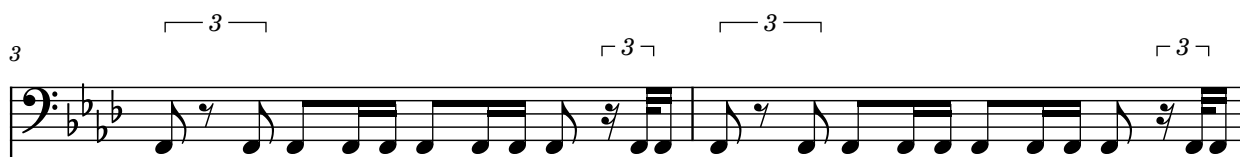
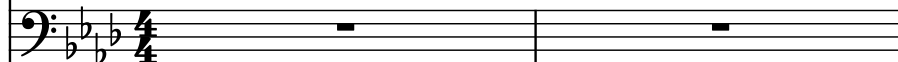
Bass Synthesizer, Bionic Commando



Electric Guitar, Level 1



Rotary Organ, By Matt Gafford



9

Synth.

El. Guit.

Rot. Org.

Measures 9-10. Synth. (bass clef) has triplet eighth notes. El. Guit. (treble clef) has eighth notes and a triplet. Rot. Org. (bass clef) has a whole note and a triplet half note.

11

Synth.

El. Guit.

Rot. Org.

Measures 11-12. Synth. (bass clef) has triplet eighth notes. El. Guit. (treble clef) has eighth notes and a triplet. Rot. Org. (bass clef) has a triplet eighth note and a half note.

13

Synth.

El. Guit.

Rot. Org.

Measures 13-14. Synth. (bass clef) has triplet eighth notes. El. Guit. (treble clef) has eighth notes and a triplet. Rot. Org. (bass clef) has a half note and a triplet half note.

15

Synth.

El. Guit.

Rot. Org.

Measures 15-16. Synth. (bass clef) has triplet eighth notes. El. Guit. (treble clef) has eighth notes and a triplet. Rot. Org. (bass clef) has a half note and a triplet half note.

25

Synth.

El. Guit.

Rot. Org.

Measures 25-26 of a musical score. The Synth. part (bass clef) features a repeating eighth-note pattern with triplets marked above. The El. Guit. part (treble clef) has a melodic line with slurs and a triplet marked above. The Rot. Org. part (bass clef) has a single note in measure 25 and a half note in measure 26.

27

Synth.

El. Guit.

Rot. Org.

Measures 27-28 of a musical score. The Synth. part (bass clef) continues the eighth-note pattern with triplets. The El. Guit. part (treble clef) has a melodic line with slurs and triplets marked above. The Rot. Org. part (bass clef) has a half note in measure 27 and a whole note in measure 28.

29

Synth.

El. Guit.

Rot. Org.

Measures 29-30 of a musical score. The Synth. part (bass clef) continues the eighth-note pattern with triplets. The El. Guit. part (treble clef) has a melodic line with slurs and triplets. The Rot. Org. part (bass clef) has a half note in measure 29 and a quarter note in measure 30.

31

Synth.

El. Guit.

Rot. Org.

Measures 31-32 of a musical score. The Synth. part (bass clef) continues the eighth-note pattern with triplets. The El. Guit. part (treble clef) has a melodic line with slurs and triplets. The Rot. Org. part (bass clef) has a half note in measure 31 and a whole note in measure 32.

33

Synth.

El. Guit.

Rot. Org.

Measures 33-34. Synth. (Bass) plays a rhythmic pattern of eighth notes with triplet markings. El. Guit. (Treble) plays eighth notes and rests. Rot. Org. (Bass) plays a half note and a quarter note. All staves are in B-flat major.

35

Synth.

El. Guit.

Rot. Org.

Measures 35-36. Synth. (Bass) continues the eighth note pattern. El. Guit. (Treble) has a long slur over measures 35 and 36. Rot. Org. (Bass) has a half note and a quarter note. All staves are in B-flat major.

37

Synth.

El. Guit.

Rot. Org.

Measures 37-38. Synth. (Bass) continues the eighth note pattern. El. Guit. (Treble) has a long slur over measures 37 and 38. Rot. Org. (Bass) has a half note and a quarter note. All staves are in B-flat major.

39

Synth.

El. Guit.

Rot. Org.

Measure 39. Synth. (Bass) is silent. El. Guit. (Treble) has a half note and a quarter note. Rot. Org. (Bass) is silent. All staves are in B-flat major.