

Oil Ocean Zone: Act 2

Composer: Tee Lopes

Game: Sonic Mania

pianogame.org

♩ = 120

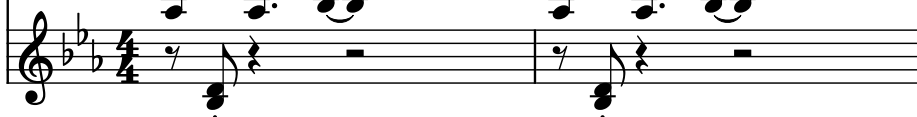
Electric Guitar, Overdriven Guitar



Electric Guitar, Distortion Guitar



Pad Synthesizer, Pad 3 (polysynth)



3

El. Guit.



El. Guit.



Synth.

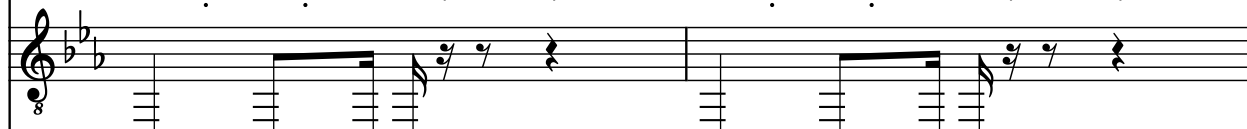


6

El. Guit.



El. Guit.



Synth.

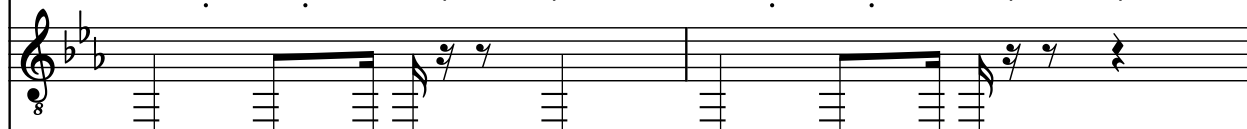


8

El. Guit.



El. Guit.



Synth.



10

El. Guit.

El. Guit.

Synth.

12

El. Guit.

El. Guit.

Synth.

14

El. Guit.

El. Guit.

Synth.

16

El. Guit.

El. Guit.

Synth.

18

El. Guit.

El. Guit.

Synth.

Measure 18: The first electric guitar part plays a melodic line starting on G4, moving up stepwise to D5, then down to G4. The second electric guitar part is silent. The synth part plays a bass line starting on G3, moving up stepwise to D4, then down to G3.

Measure 19: The first electric guitar part continues the melodic line. The second electric guitar part is silent. The synth part continues the bass line.

20

El. Guit.

El. Guit.

Synth.

Measure 20: The first electric guitar part plays a melodic line starting on G4, moving up stepwise to D5, then down to G4. The second electric guitar part is silent. The synth part plays a bass line starting on G3, moving up stepwise to D4, then down to G3.

Measure 21: The first electric guitar part continues the melodic line. The second electric guitar part is silent. The synth part continues the bass line.

Measure 22: The first electric guitar part continues the melodic line. The second electric guitar part is silent. The synth part continues the bass line.

23

El. Guit.

El. Guit.

Synth.

Measure 23: The first electric guitar part is silent. The second electric guitar part is silent. The synth part plays a bass line starting on G3, moving up stepwise to D4, then down to G3.

Measure 24: The first electric guitar part is silent. The second electric guitar part is silent. The synth part continues the bass line.

Measure 25: The first electric guitar part is silent. The second electric guitar part is silent. The synth part continues the bass line.

26

El. Guit.

El. Guit.

Synth.

Measure 26: The first electric guitar part is silent. The second electric guitar part is silent. The synth part plays a bass line starting on G3, moving up stepwise to D4, then down to G3.

Measure 27: The first electric guitar part is silent. The second electric guitar part is silent. The synth part continues the bass line.

Measure 28: The first electric guitar part is silent. The second electric guitar part is silent. The synth part continues the bass line.

30

El. Guit.

El. Guit.

Synth.

33

El. Guit.

El. Guit.

Synth.

35

El. Guit.

El. Guit.

Synth.

37

El. Guit.

El. Guit.

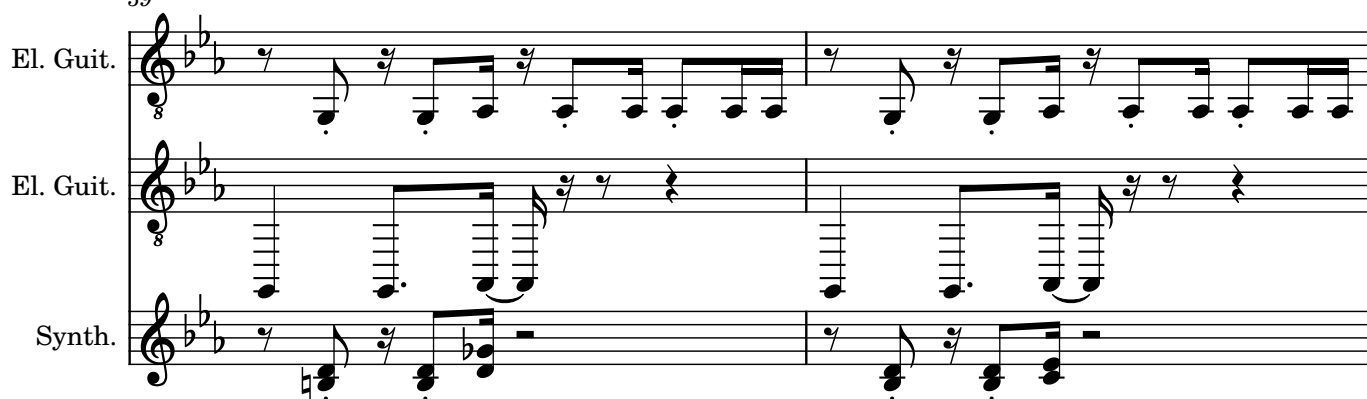
Synth.

39

El. Guit.

El. Guit.

Synth.



41

El. Guit.

El. Guit.

Synth.



43

El. Guit.

El. Guit.

Synth.

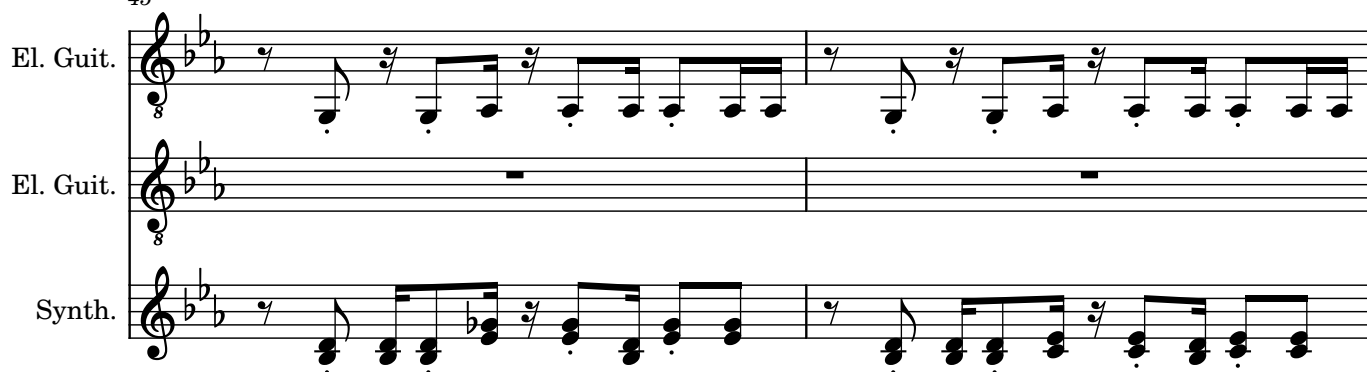


45

El. Guit.

El. Guit.

Synth.



47

El. Guit.

El. Guit.

Synth.

8

49

El. Guit.

El. Guit.

Synth.

8

52

El. Guit.

El. Guit.

Synth.

8

55

El. Guit.

El. Guit.

Synth.

8