

Tears & Flow - Might's Theme

Composer: Kenji Kawai

Game: Psychic Force 2012

pianogame.org

♩ = 162



9

3



3

3

3

9

9

6



9

9



9

9

12



9

9

9

15

Example 15

$$\underbrace{\hspace{10em}}_9 \qquad \underbrace{\hspace{10em}}_9$$

18 

_____9_____

20






22 

— 3 —

9 9

24 

3

26

9 9 3 3 9 9

28

9 9 9 9

30

3 3 9 9

32

3 9 9 9

36

3 3 9 9

9


43

3

3

9

9

45 

47


3

3

9

9 3

50



3

3

3

52

3

54

9 9 3

57

3 3 3

59

3 3 9 9 3

62

3 3 9 9

64

3

6

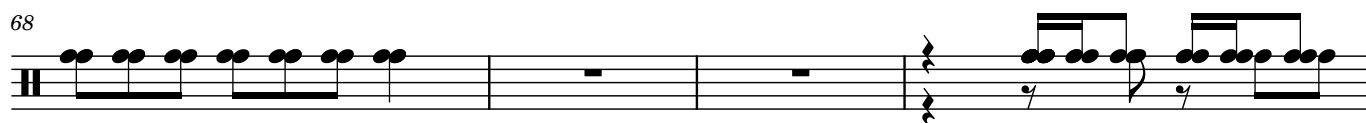
9

66



3

68



3 3 9

9

3

72



3 9

9 3

75



9

77



9

79

115

3 3

9

117

3

9

119

3

9

121

9

123

3



125

127

129

131

133

135

[illegible]

139

3

3

5

3

141

Example 141 is a single-staff musical score in 2/4 time. The melody is composed of eighth and sixteenth notes. It features several triplet markings: a triplet of eighth notes in the second measure, a triplet of sixteenth notes in the fourth measure, and a triplet of eighth notes in the eighth measure. The piece concludes with a double bar line and repeat dots.

[illegible]

146

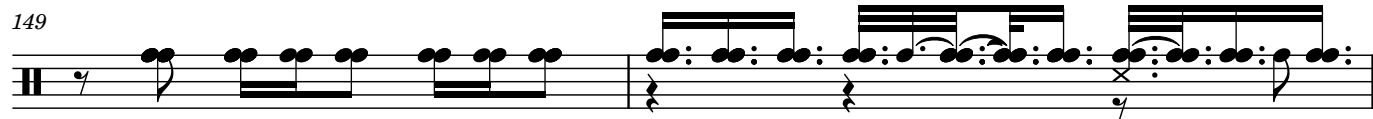
3

9

3

9

9



9

9



9

3



3

9

3

9



3

3

3

9



159

3

3

9

161

3

9

9

163

3

3

3

9

9

165

9

168

3



170

3 3 3 9 3

172

3 3

175

178

9 9 9 3 3 3



181

9

183



3

3

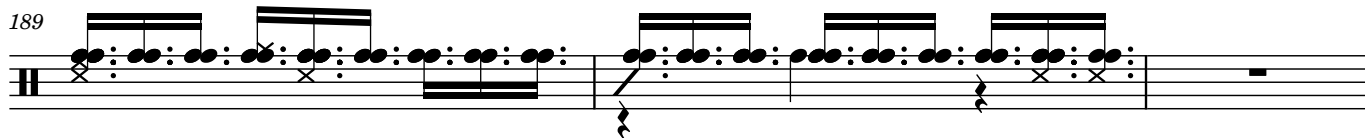
9

186



9 9 9 9 9

189



9

192



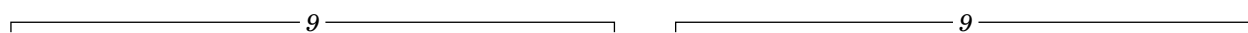
3

9 9

194



3 3

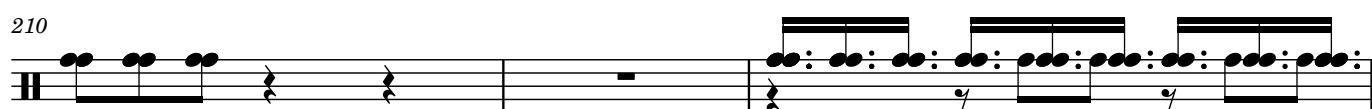


9

3



9

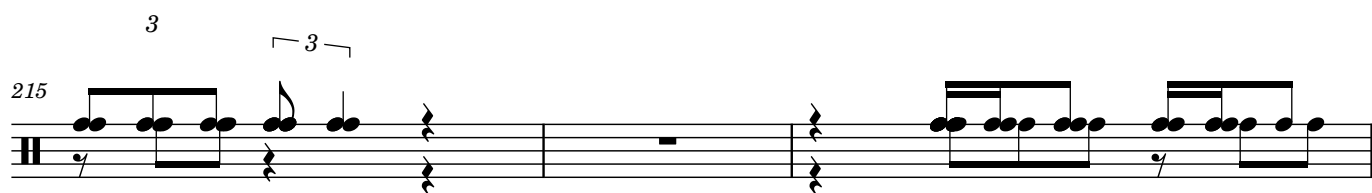


3 9 3 9 3



3

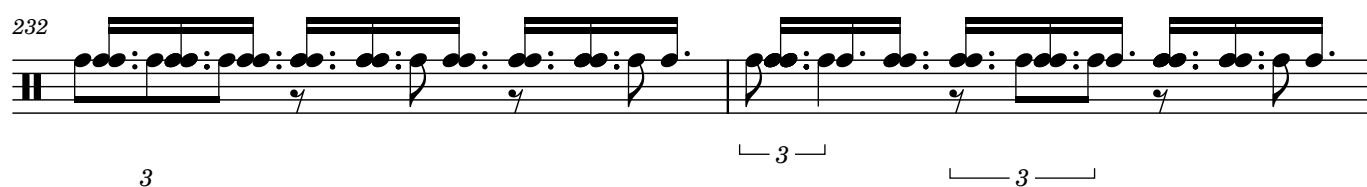
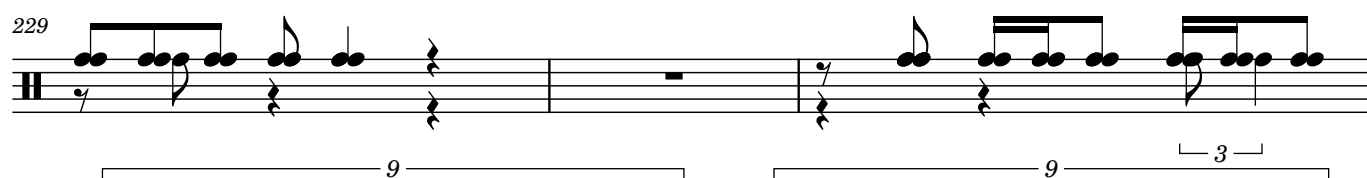
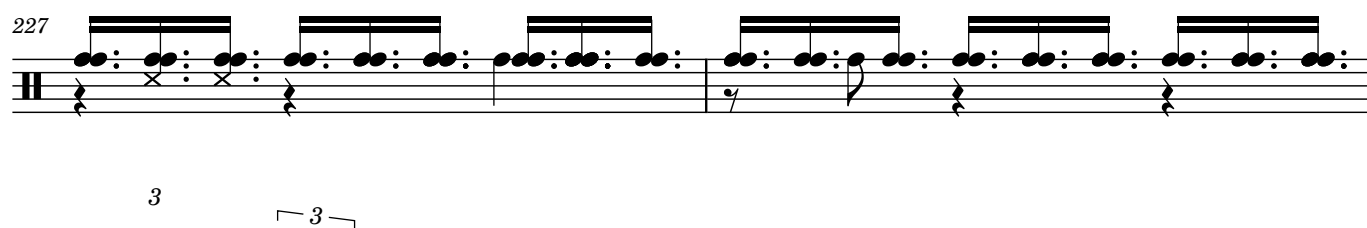
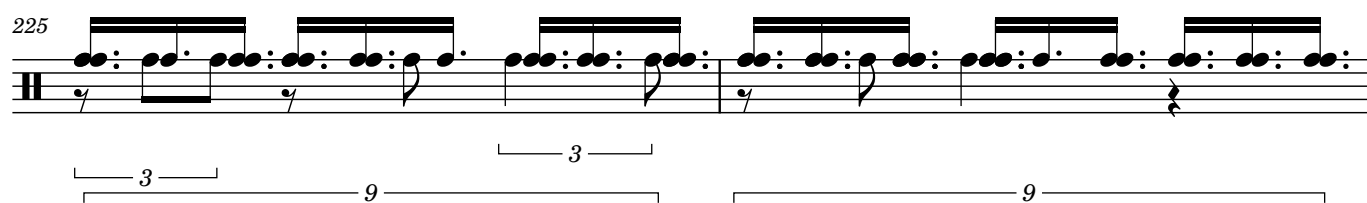
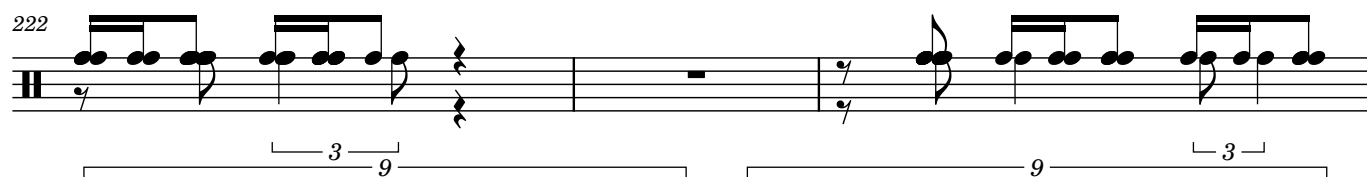
3



3 9 3 9 3



3 3



9

234

3 9 3 9 3

238

3 9 9

240

3 3 3

242

3 3 9 9

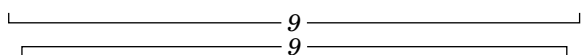
246

3 3 3



250

252



254

257

259

261

3 3

3 3 9

263

9

265

9 5

266

5

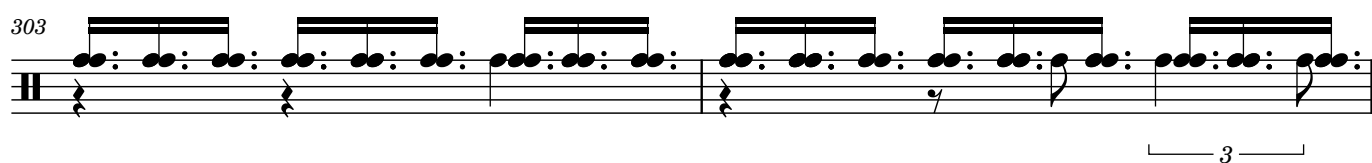
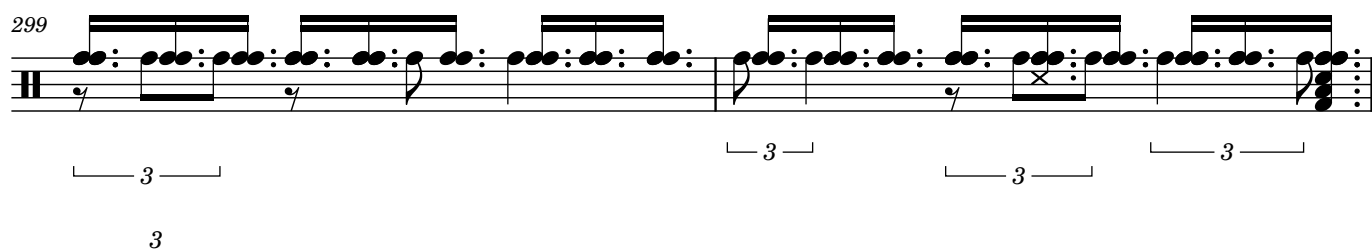
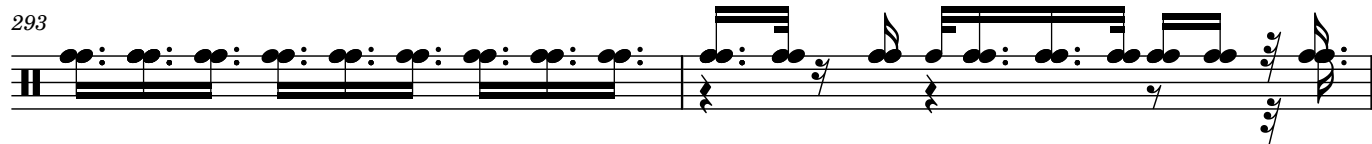
267

5

269

5





9



9

9



9

3 3 3

9



9

9



9

3

3

9

3



3

3

3

315

9 5 3 3

317

319

9 9 3 3

321

324

9 9 9 3

9

326

9 3 9

328

3 9 3 9

330

3 9 9

332

5

334

3 3

336

9 9

3 3

9 9

338

3

340

3 3

9 9

343

3 3 3

9

345

3 3

9

9

348

3

350

9

353

9

9

356

9

359

9

9

362

9

3 3

366

3 3

9 9

368

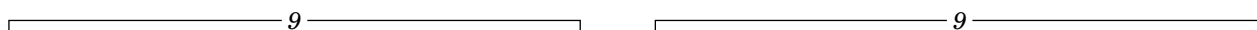
3 3 9

370

9

372

3



374

376

378

381

385

9

9

387

3

3

3

389

3