

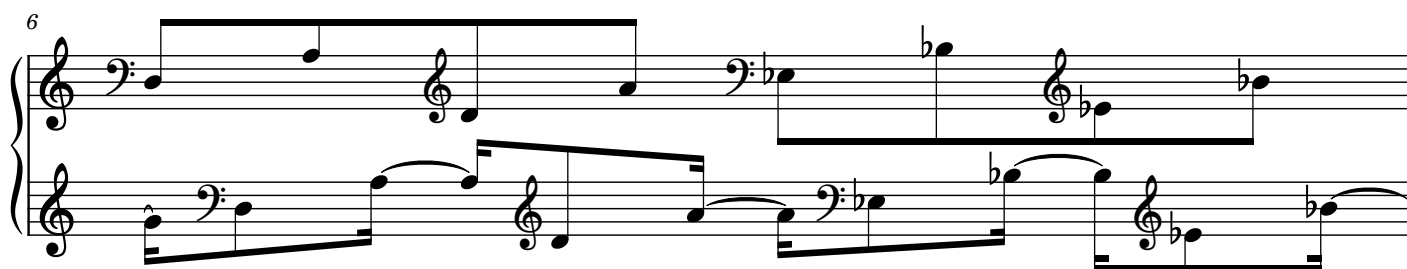
Swim

Composer: Kouji Murata

Game: Golgo 13: Top Secret Episode

pianogame.org

♩ = 130



7

Measures 7 and 8 of a piano piece. Measure 7 features a treble staff with a half note G4 and a quarter note A4, and a bass staff with a half note F3 and a quarter note G3. Measure 8 features a treble staff with a half note A4 and a quarter note B4, and a bass staff with a half note G3 and a quarter note A3. Both measures have a key signature of one sharp (F#).

8

Measures 8 and 9 of a piano piece. Measure 8 features a treble staff with a half note B4 and a quarter note C5, and a bass staff with a half note A3 and a quarter note B3. Measure 9 features a treble staff with a half note C5 and a quarter note D5, and a bass staff with a half note B3 and a quarter note C4. Both measures have a key signature of one flat (Bb).

9

Measures 9 and 10 of a piano piece. Measure 9 features a treble staff with a half note D5 and a quarter note E5, and a bass staff with a half note C4 and a quarter note D4. Measure 10 features a treble staff with a half note E5 and a quarter note F5, and a bass staff with a half note D4 and a quarter note E4. Both measures have a key signature of one flat (Bb).

11

Measures 11 and 12 of a piano piece. Measure 11 features a treble staff with a half note F5 and a quarter note G5, and a bass staff with a half note E4 and a quarter note F4. Measure 12 features a treble staff with a half note G5 and a quarter note A5, and a bass staff with a half note F4 and a quarter note G4. Both measures have a key signature of one flat (Bb).

13

Measures 13 and 14 of a piano piece. Measure 13 features a treble staff with a half note A5 and a quarter note B5, and a bass staff with a half note G4 and a quarter note A4. Measure 14 features a treble staff with a half note B5 and a quarter note C6, and a bass staff with a half note A4 and a quarter note B4. Both measures have a key signature of one flat (Bb).

15

Measures 15 and 16 of a piano piece. Measure 15 features a treble staff with a half note C6 and a quarter note D6, and a bass staff with a half note B4 and a quarter note C5. Measure 16 features a treble staff with a half note D6 and a quarter note E6, and a bass staff with a half note C5 and a quarter note D5. Both measures have a key signature of one flat (Bb).

17



Measures 17-18 of a musical score. The key signature has one sharp (F#). Measure 17 features a descending eighth-note line in the right hand and a descending eighth-note line in the left hand. Measure 18 continues the descending eighth-note line in the right hand and a descending eighth-note line in the left hand.

18



Measures 18-19 of a musical score. The key signature has one sharp (F#). Measure 18 features a descending eighth-note line in the right hand and a descending eighth-note line in the left hand. Measure 19 continues the descending eighth-note line in the right hand and a descending eighth-note line in the left hand.

19



Measures 19-20 of a musical score. The key signature has one sharp (F#). Measure 19 features a descending eighth-note line in the right hand and a descending eighth-note line in the left hand. Measure 20 continues the descending eighth-note line in the right hand and a descending eighth-note line in the left hand.

20



Measures 20-21 of a musical score. The key signature has one sharp (F#). Measure 20 features a descending eighth-note line in the right hand and a descending eighth-note line in the left hand. Measure 21 continues the descending eighth-note line in the right hand and a descending eighth-note line in the left hand.

21



Measures 21-22 of a musical score. The key signature has one sharp (F#). Measure 21 features a descending eighth-note line in the right hand and a descending eighth-note line in the left hand. Measure 22 continues the descending eighth-note line in the right hand and a descending eighth-note line in the left hand.

22



Measures 22-23 of a musical score. The key signature changes to one flat (Bb). Measure 22 features a descending eighth-note line in the right hand and a descending eighth-note line in the left hand. Measure 23 continues the descending eighth-note line in the right hand and a descending eighth-note line in the left hand.

23

Measures 23-24: This system contains measures 23 and 24. Measure 23 features a treble staff with a half note G#4 and a bass staff with a half note G#3. Measure 24 features a treble staff with a half note A4 and a bass staff with a half note A3. Both measures have a common time signature of 2/4.

24

Measures 24-25: This system contains measures 24 and 25. Measure 24 features a treble staff with a half note Bb4 and a bass staff with a half note Bb3. Measure 25 features a treble staff with a half note C5 and a bass staff with a half note C4. Both measures have a common time signature of 2/4.

25

Measures 25-26: This system contains measures 25 and 26. Measure 25 features a treble staff with a half note D5 and a bass staff with a half note D4. Measure 26 features a treble staff with a half note E5 and a bass staff with a half note E4. Both measures have a common time signature of 2/4.

27

Measures 27-28: This system contains measures 27 and 28. Measure 27 features a treble staff with a half note F#5 and a bass staff with a half note F#4. Measure 28 features a treble staff with a half note G#5 and a bass staff with a half note G#4. Both measures have a common time signature of 2/4.

29

Measures 29-30: This system contains measures 29 and 30. Measure 29 features a treble staff with a half note A5 and a bass staff with a half note A4. Measure 30 features a treble staff with a half note Bb5 and a bass staff with a half note Bb4. Both measures have a common time signature of 2/4.

31

Measures 31-32: This system contains measures 31 and 32. Measure 31 features a treble staff with a half note C6 and a bass staff with a half note C5. Measure 32 features a treble staff with a half note D6 and a bass staff with a half note D5. Both measures have a common time signature of 2/4.