

# Intro Stage (4)

Composer: Junya Nakano

Game: Mega Man 7

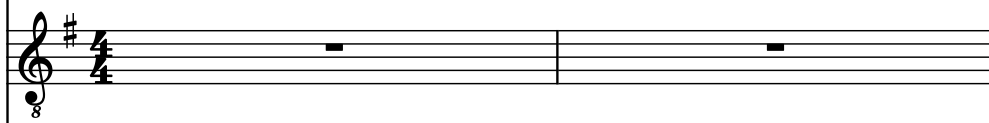
[pianogame.org](http://pianogame.org)

♩ = 105

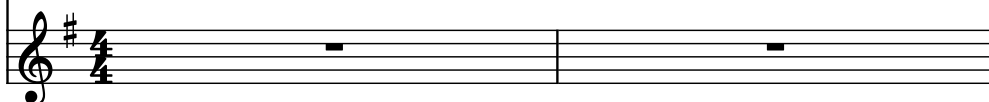
Bass Guitar, Slap Bass



Electric Guitar, Harpsichord



Pad Synthesizer, Polysynth 1

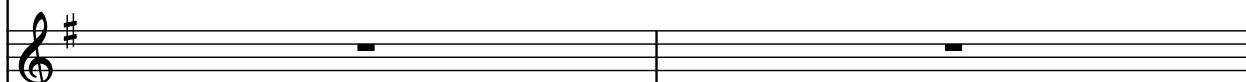


3

B. Guit.



El. Guit.



Synth.

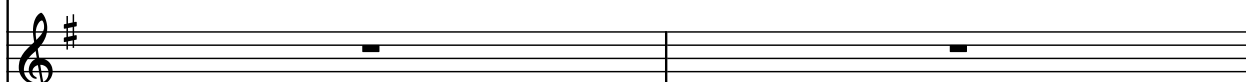


5

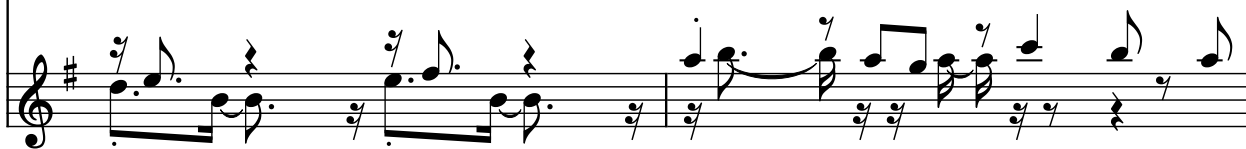
B. Guit.



El. Guit.



Synth.

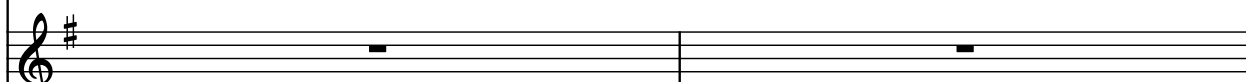


7

B. Guit.



El. Guit.



Synth.



9

B. Guit.

El. Guit.

Synth.

11

B. Guit.

El. Guit.

Synth.

13

B. Guit.

El. Guit.

Synth.

15

B. Guit.

El. Guit.

Synth.

Detailed description: The musical score is written for three instruments: B. Guit. (Bass Guitar), El. Guit. (Electric Guitar), and Synth. (Synthesizer). The key signature is one sharp (F#). The score is divided into four systems, each containing two measures. System 1 (measures 9-10) shows the B. Guit. playing a continuous eighth-note pattern, El. Guit. playing a sustained chord, and Synth. playing a melodic line with triplets. System 2 (measures 11-12) shows the B. Guit. continuing the eighth-note pattern, El. Guit. playing a sustained chord, and Synth. playing a melodic line with triplets. System 3 (measures 13-14) shows the B. Guit. continuing the eighth-note pattern, El. Guit. playing a sustained chord, and Synth. playing a melodic line with triplets. System 4 (measures 15-16) shows the B. Guit. continuing the eighth-note pattern, El. Guit. playing a sustained chord, and Synth. playing a melodic line with triplets. The score includes various musical notations such as eighth notes, quarter notes, and triplets, as well as dynamic markings like 'f' and 'p'.

17

B. Guit.

El. Guit.

Synth.

Measures 17-18 of the musical score. The B. Guit. part features a bass line with eighth and sixteenth notes. The El. Guit. part has a treble line with a series of chords and a triplet of eighth notes. The Synth. part has a treble line with a series of eighth notes and a triplet of eighth notes. The key signature is one sharp (F#).

19

B. Guit.

El. Guit.

Synth.

Measures 19-20 of the musical score. The B. Guit. part continues with a bass line. The El. Guit. part features a series of chords and a triplet of eighth notes. The Synth. part has a treble line with a series of eighth notes and a triplet of eighth notes. The key signature is one sharp (F#).

21

B. Guit.

El. Guit.

Synth.

Measures 21-22 of the musical score. The B. Guit. part continues with a bass line. The El. Guit. part features a series of chords and a triplet of eighth notes. The Synth. part has a treble line with a series of eighth notes and a triplet of eighth notes. The key signature is one sharp (F#).

23

B. Guit.

El. Guit.

Synth.

Measures 23-24 of the musical score. The B. Guit. part features a bass line with eighth and sixteenth notes. The El. Guit. part has a treble line with a series of chords and a triplet of eighth notes. The Synth. part has a treble line with a series of eighth notes and a triplet of eighth notes. The key signature is one sharp (F#).

25

B. Guit.

El. Guit.

Synth.

Measures 25-26: Bass guitar plays a continuous eighth-note pattern in G major. Electric guitar is silent. Synth plays a sequence of eighth notes with triplet markings in measures 25 and 26.

27

B. Guit.

El. Guit.

Synth.

Measures 27-28: Bass guitar continues the eighth-note pattern. Electric guitar is silent. Synth continues the eighth-note sequence with triplet markings in measures 27 and 28.

29

B. Guit.

El. Guit.

Synth.

Measures 29-30: Bass guitar changes to a sixteenth-note pattern. Electric guitar is silent. Synth plays a more complex eighth-note sequence with triplet markings in measures 29 and 30.

31


B. Guit.

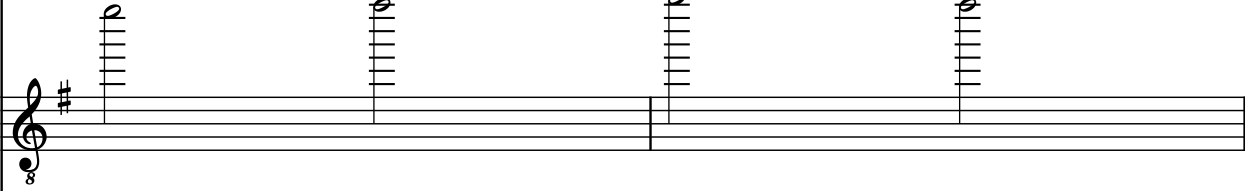
El. Guit.


Synth.

Measures 31-32: Bass guitar continues the sixteenth-note pattern. Electric guitar is silent. Synth plays the eighth-note sequence with triplet markings in measures 31 and 32.

33

B. Guit. 

El. Guit. 

Synth. 

35

B. Guit. 

El. Guit. 

Synth. 


37

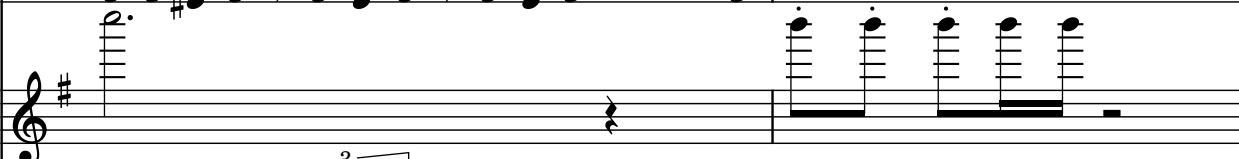
B. Guit. 

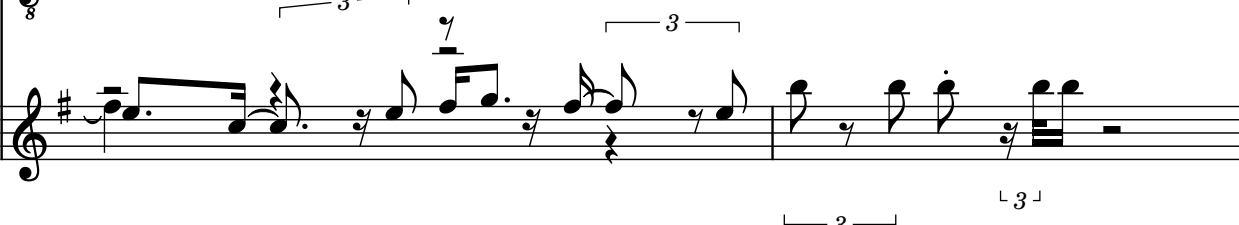
El. Guit. 

Synth. 


39

B. Guit. 


El. Guit. 

Synth. 

41

B. Guit. 

El. Guit. 

Synth. 

43

B. Guit. 

El. Guit. 

Synth. 

45

B. Guit. 

El. Guit. 

Synth. 