

Hoohee Mountain

Composer: Yoko Shimomura

Game: Mario & Luigi: Superstar Saga

pianogame.org

Musical score for "The Rose Tree" in 4/4 time. The tempo is marked as 135. The key signature is one flat (B-flat). The score is written for a treble and bass staff. The melody is in the treble staff, and the accompaniment is in the bass staff. The score includes various musical notations such as triplets, slurs, and a key signature of one flat. The score is divided into measures, with measure numbers 3, 6, 9, 12, and 15 indicated. The score ends with a double bar line.

2

19

3 3 3

23

27

3 3

30

3 3

35

3 3 3

39

3 3

43

3

46

3

50

3

54

3

57

3

60

3

3

63

3

66

3

70

3

3

3

74

3

78

3

81

3

86

3

90

3

94

3

97

3

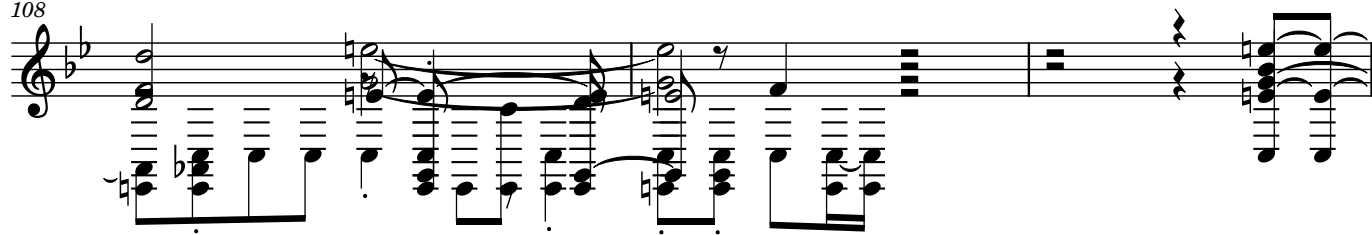
101

3

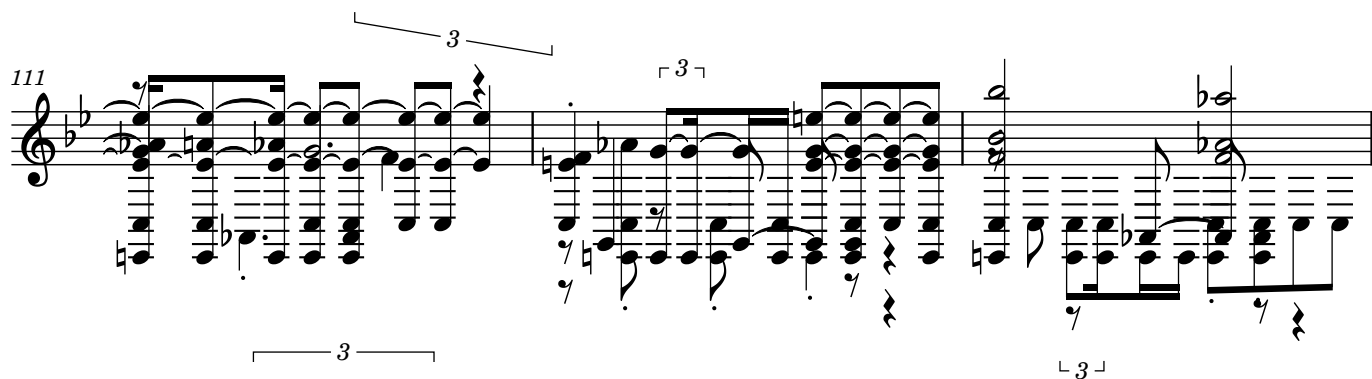
105

3

108



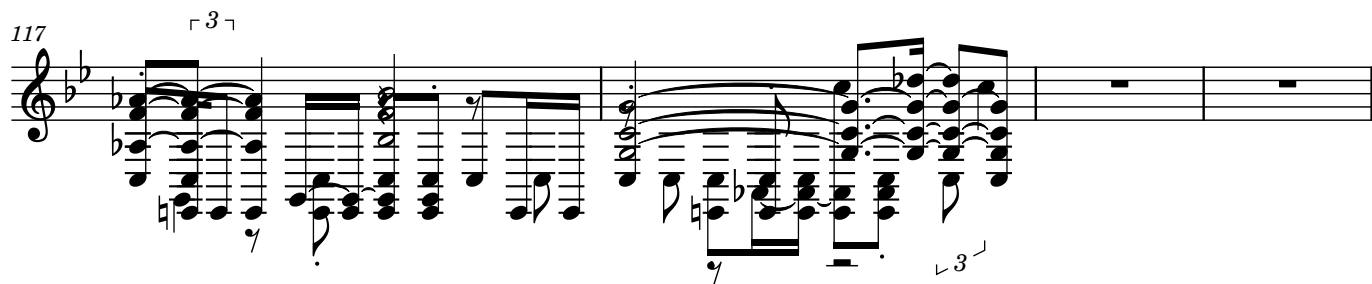
111



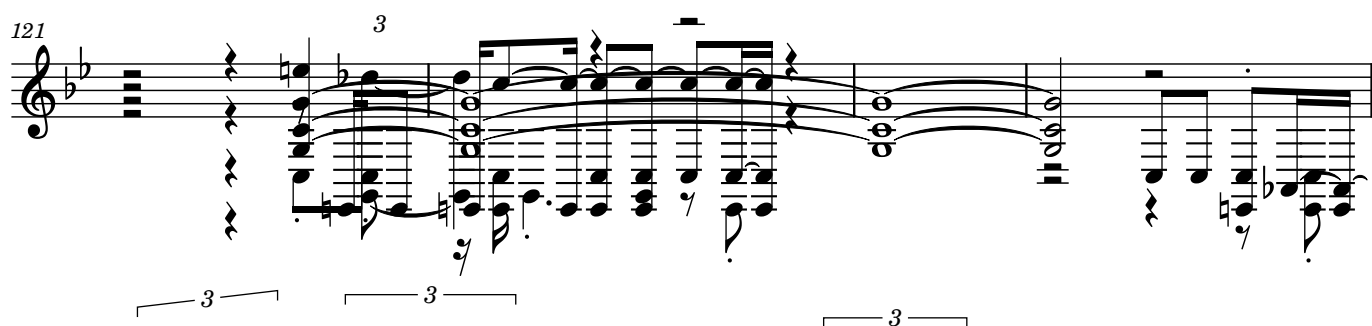
114



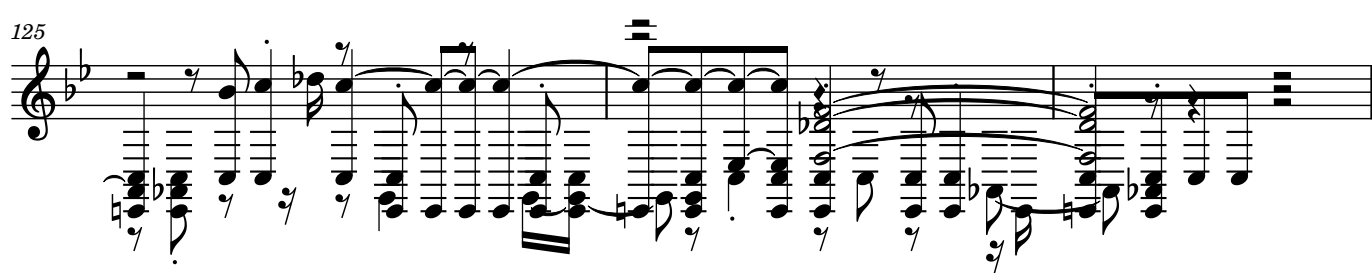
117



121



125



128

3

132

3

136

3

140

3

142

3

146

3

149

3

154

3

3

157

3

3

160

3

164

3

3

167

3

3

3

170

3

175

3

178

3

183

3

188

3

192

3

196

Measures 196-198 of a musical score. The key signature has two flats (B-flat and E-flat). Measure 196 features a treble clef with a half note G4 and a whole note chord of F4-A4-C5. The bass line consists of a descending eighth-note scale: G3, F3, E3, D3, C3, B2, A2, G2. Measures 197 and 198 continue the bass line with a descending eighth-note scale: F2, E2, D2, C2, B1, A1, G1, F1. A triplet of eighth notes (G4, A4, B4) is marked above measure 198.

199

Measures 199-202 of a musical score. Measure 199 features a treble clef with a half note G4 and a whole note chord of F4-A4-C5. The bass line consists of a descending eighth-note scale: G3, F3, E3, D3, C3, B2, A2, G2. Measures 200 and 201 continue the bass line with a descending eighth-note scale: F2, E2, D2, C2, B1, A1, G1, F1. A triplet of eighth notes (G4, A4, B4) is marked above measure 201. Measure 202 features a treble clef with a half note G4 and a whole note chord of F4-A4-C5. The bass line consists of a descending eighth-note scale: G3, F3, E3, D3, C3, B2, A2, G2. A triplet of eighth notes (G4, A4, B4) is marked above measure 202.

203

Measures 203-205 of a musical score. Measure 203 features a treble clef with a half note G4 and a whole note chord of F4-A4-C5. The bass line consists of a descending eighth-note scale: G3, F3, E3, D3, C3, B2, A2, G2. Measures 204 and 205 continue the bass line with a descending eighth-note scale: F2, E2, D2, C2, B1, A1, G1, F1. A triplet of eighth notes (G4, A4, B4) is marked above measure 205.

206

Measures 206-208 of a musical score. Measure 206 features a treble clef with a half note G4 and a whole note chord of F4-A4-C5. The bass line consists of a descending eighth-note scale: G3, F3, E3, D3, C3, B2, A2, G2. Measures 207 and 208 continue the bass line with a descending eighth-note scale: F2, E2, D2, C2, B1, A1, G1, F1. A triplet of eighth notes (G4, A4, B4) is marked above measure 208.