

# Bloodlines

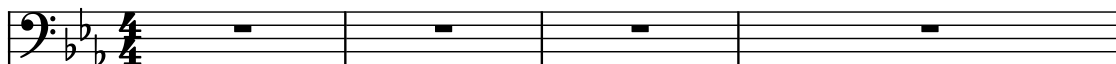
Composer: Michiru Yamane

Game: Castlevania Dracula X

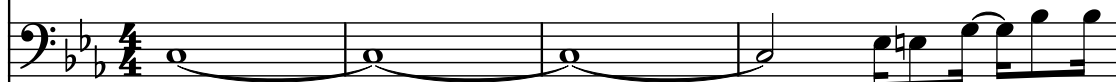
[pianogame.org](http://pianogame.org)

♩ = 141

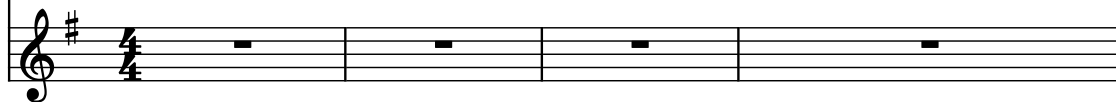
Rag Dung, Guitar1



Bass Guitar, Bass

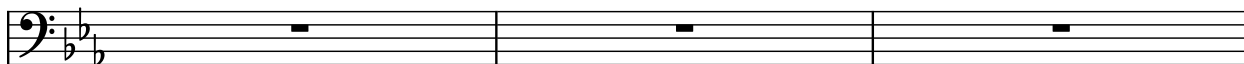


Trumpet, Horn



5

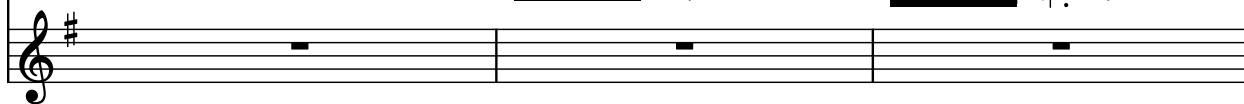
Rg. Dng.



B. Guit.

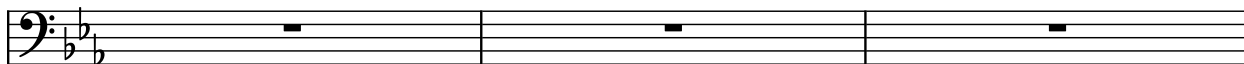


Tpt.



8

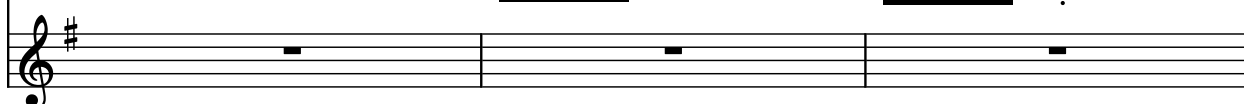
Rg. Dng.



B. Guit.

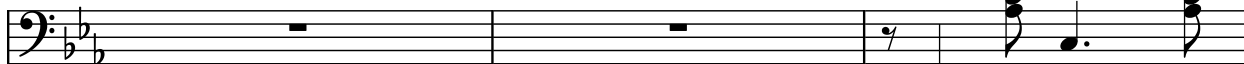


Tpt.



11

Rg. Dng.



B. Guit.



Tpt.



14

Rg. Dng.



B. Guit.



Tpt.



17

Rg. Dng.

B. Guit.

Tpt.

Measures 17-19. Rg. Dng. (Bass) has chords and a melodic line. B. Guit. (Bass) has a continuous eighth-note pattern. Tpt. (Trumpet) has a melodic line with a 7-measure rest in measure 18.

20

Rg. Dng.

B. Guit.

Tpt.

Measures 20-22. Rg. Dng. (Bass) has chords and rests. B. Guit. (Bass) has a continuous eighth-note pattern. Tpt. (Trumpet) has a whole note in measure 20 and rests in measures 21 and 22.

23

Rg. Dng.

B. Guit.

Tpt.

Measures 23-25. Rg. Dng. (Bass) has rests. B. Guit. (Bass) has a continuous eighth-note pattern. Tpt. (Trumpet) has rests.

26

Rg. Dng.

B. Guit.

Tpt.

Measures 26-28. Rg. Dng. (Bass) has rests. B. Guit. (Bass) has a continuous eighth-note pattern. Tpt. (Trumpet) has rests.

29

Rg. Dng.

B. Guit.

Tpt.

Measures 29-31. Rg. Dng. (Bass) has chords and rests. B. Guit. (Bass) has a continuous eighth-note pattern. Tpt. (Trumpet) has rests.

32

Rg. Dng.

B. Guit.

Tpt.

Measures 32-34: Rg. Dng. plays chords and a triplet. B. Guit. plays a continuous eighth-note pattern. Tpt. is silent.

35

Rg. Dng.

B. Guit.

Tpt.

Measures 35-37: Rg. Dng. plays chords. B. Guit. plays a continuous eighth-note pattern. Tpt. is silent.

38

Rg. Dng.

B. Guit.

Tpt.

Measures 38-40: Rg. Dng. is silent. B. Guit. plays a continuous eighth-note pattern. Tpt. is silent.

41

Rg. Dng.

B. Guit.

Tpt.

Measures 41-44: Rg. Dng. is silent. B. Guit. plays a continuous eighth-note pattern. Tpt. is silent.

45

Rg. Dng.

B. Guit.

Tpt.

Measures 45-48: Rg. Dng. plays chords. B. Guit. plays a continuous eighth-note pattern. Tpt. plays whole notes.

49

Rg. Dng.

B. Guit.

Tpt.

53

Rg. Dng.

B. Guit.

Tpt.

56

Rg. Dng.

B. Guit.

Tpt.

59

Rg. Dng.

B. Guit.

Tpt.

62

Rg. Dng.

B. Guit.

Tpt.

65

Rg. Dng.

B. Guit.

Tpt.

68

Rg. Dng.

B. Guit.

Tpt.

70

Rg. Dng.

B. Guit.

Tpt.

73

Rg. Dng.

B. Guit.

Tpt.

76

Rg. Dng.

B. Guit.

Tpt.

79

Rg. Dng.

B. Guit.

Tpt.

82

Rg. Dng.

B. Guit.

Tpt.

85

Rg. Dng.

B. Guit.

Tpt.

88

Rg. Dng.

B. Guit.

Tpt.

91

Rg. Dng.

B. Guit.

Tpt.

95

Rg. Dng.

B. Guit.

Tpt.

Measures 95-97. The Rg. Dng. part features complex, multi-measure rests. The B. Guit. part has a continuous eighth-note melody. The Tpt. part has whole notes.

98

Rg. Dng.

B. Guit.

Tpt.

Measures 98-100. The Rg. Dng. part features complex, multi-measure rests. The B. Guit. part has a continuous eighth-note melody. The Tpt. part has whole notes.

101

Rg. Dng.

B. Guit.

Tpt.

Measures 101-104. The Rg. Dng. part features complex, multi-measure rests. The B. Guit. part has a continuous eighth-note melody. The Tpt. part has whole notes.

105

Rg. Dng.

B. Guit.

Tpt.

Measures 105-107. The Rg. Dng. part features complex, multi-measure rests. The B. Guit. part has a continuous eighth-note melody. The Tpt. part has whole notes.

108

Rg. Dng.

B. Guit.

Tpt.

Measures 108-110. The Rg. Dng. part features complex, multi-measure rests. The B. Guit. part has a continuous eighth-note melody. The Tpt. part has whole notes.



111

Rg. Dng.

B. Guit.

Tpt.

Measures 111-113. Rg. Dng. is in bass clef with a key signature of two flats, playing whole rests. B. Guit. is in bass clef with a key signature of two flats, playing a rhythmic pattern of eighth and sixteenth notes. Tpt. is in treble clef with a key signature of one sharp, playing whole rests and a half note G#4 in the final measure.

114

Rg. Dng.

B. Guit.

Tpt.

Measures 114-118. Rg. Dng. is in bass clef with a key signature of two flats, playing whole rests and a half note G2 in the final measure. B. Guit. is in bass clef with a key signature of two flats, playing a half note G2 in the first measure and whole rests thereafter. Tpt. is in treble clef with a key signature of one sharp, playing a half note G#4 in the first measure and whole rests thereafter.