

Battle! VS Zinna

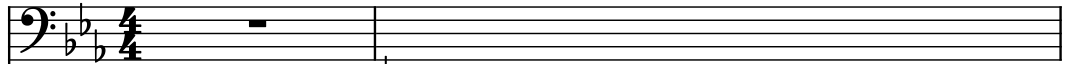
Composer: Junichi Masuda

Game: Pokémon (Omega Ruby, Alpha Sapphire)

pianogame.org

♩ = 175

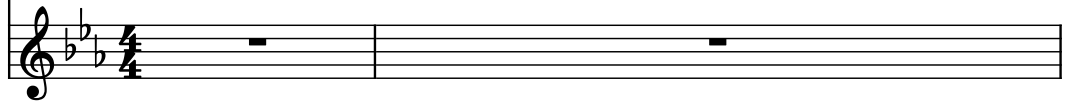
Bass Synthesizer, Bass



Soprano Guitar, Strings

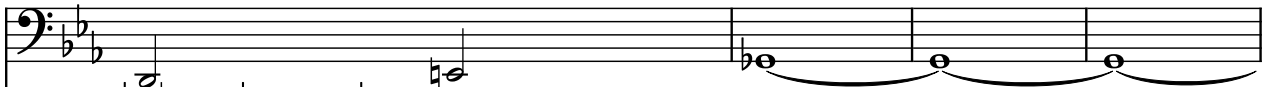


Accordion, Accordion



3

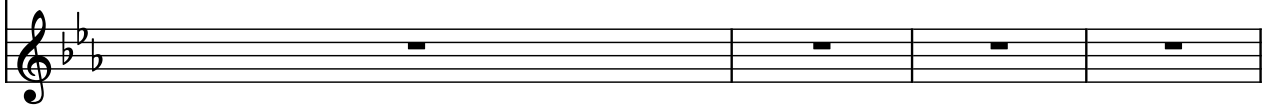
Synth.



S. Guit.



Acc.

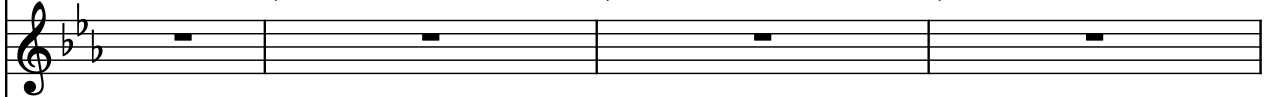


7

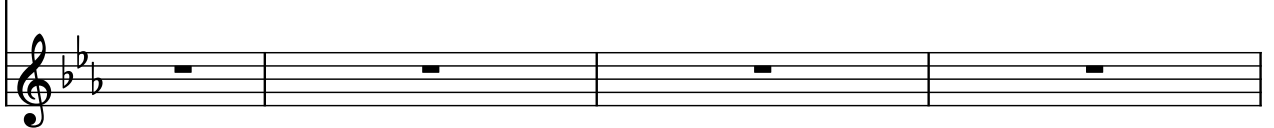
Synth.



S. Guit.



Acc.

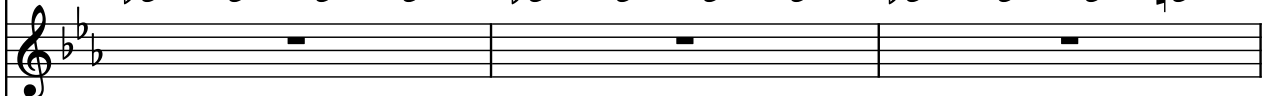


11

Synth.



S. Guit.



Acc.



14

Synth.

S. Guit.

Acc.

Measures 14-16: Synth. (Bass) plays a descending eighth-note line. S. Guit. (Treble) is silent. Acc. (Treble) plays a steady eighth-note accompaniment.

17

Synth.

S. Guit.

Acc.

Measures 17-19: Synth. (Bass) continues the descending eighth-note line. S. Guit. (Treble) is silent. Acc. (Treble) continues the eighth-note accompaniment.

20

Synth.

S. Guit.

Acc.

Measures 20-23: Synth. (Bass) continues the descending eighth-note line. S. Guit. (Treble) is silent. Acc. (Treble) continues the eighth-note accompaniment.

24

Synth.

S. Guit.

Acc.

Measures 24-27: Synth. (Bass) continues the descending eighth-note line. S. Guit. (Treble) is silent. Acc. (Treble) continues the eighth-note accompaniment.

28

Synth.

S. Guit.

Acc.

Measures 28-31: Synth. (Bass) continues the descending eighth-note line. S. Guit. (Treble) is silent. Acc. (Treble) continues the eighth-note accompaniment.

32

Synth.

S. Guit.

Acc.

Measures 32-35: Synth. plays a continuous eighth-note bass line in B-flat major. S. Guit. is silent. Acc. plays a rhythmic accompaniment of eighth notes and chords.

36

Synth.

S. Guit.

Acc.

Measures 36-39: Synth. continues the eighth-note bass line. S. Guit. is silent. Acc. continues the rhythmic accompaniment.

40

Synth.

S. Guit.

Acc.

Measures 40-43: Synth. continues the eighth-note bass line. S. Guit. is silent. Acc. continues the rhythmic accompaniment.

44

Synth.

S. Guit.

Acc.

Measures 44-47: Synth. plays a sequence of chords and eighth notes. S. Guit. and Acc. are silent.

51

Synth.

S. Guit.

Acc.

Measures 51-54: Synth. (bass clef) plays a continuous eighth-note line. S. Guit. (treble clef) is silent. Acc. (treble clef) plays a series of chords with eighth-note patterns.

55

Synth.

S. Guit.

Acc.

Measures 55-57: Synth. (bass clef) continues its eighth-note line. S. Guit. (treble clef) is silent. Acc. (treble clef) continues its chordal pattern.

58

Synth.

S. Guit.

Acc.

Measures 58-60: Synth. (bass clef) continues its eighth-note line. S. Guit. (treble clef) is silent. Acc. (treble clef) continues its chordal pattern.

61

Synth.

S. Guit.

Acc.

Measures 61-63: Synth. (bass clef) continues its eighth-note line. S. Guit. (treble clef) is silent. Acc. (treble clef) continues its chordal pattern.

64

Synth.

S. Guit.

Acc.

Measures 64-66. Synth. plays a continuous eighth-note bass line. S. Guit. has rests in measures 64 and 65, then enters in measure 66 with a quarter note chord. Acc. plays a bass line with eighth notes and rests.

67

Synth.

S. Guit.

Acc.

Measures 67-69. Synth. continues the eighth-note bass line. S. Guit. enters in measure 67 with a quarter note chord and continues. Acc. has rests in measures 67 and 68, then enters in measure 69 with a quarter note chord.

70

Synth.

S. Guit.

Acc.

Measures 70-72. Synth. continues the eighth-note bass line. S. Guit. continues with quarter note chords. Acc. has rests in measures 70 and 71, then enters in measure 72 with a quarter note chord.

73

Synth.

S. Guit.

Acc.

Measures 73-75. Synth. continues the eighth-note bass line. S. Guit. has rests in measures 73 and 74, then enters in measure 75 with a quarter note chord. Acc. continues with a bass line of eighth notes and quarter notes.

76

Synth.

S. Guit.

Acc.

Measures 76-78: Synth. (bass clef) plays a continuous eighth-note pattern in B-flat major. S. Guit. (treble clef) is silent. Acc. (treble clef) plays a steady eighth-note accompaniment pattern.

79

Synth.

S. Guit.

Acc.

Measures 79-82: Synth. (bass clef) continues the eighth-note pattern. S. Guit. (treble clef) remains silent. Acc. (treble clef) continues the eighth-note accompaniment pattern.

83

Synth.

S. Guit.

Acc.

Measures 83-86: Synth. (bass clef) continues the eighth-note pattern. S. Guit. (treble clef) remains silent. Acc. (treble clef) continues the eighth-note accompaniment pattern.

87

Synth.

S. Guit.

Acc.

Measures 87-90: Synth. (bass clef) continues the eighth-note pattern. S. Guit. (treble clef) remains silent. Acc. (treble clef) continues the eighth-note accompaniment pattern.

91

Synth.

S. Guit.

Acc.

Measures 91-94: Synth. (bass clef) continues the eighth-note pattern. S. Guit. (treble clef) remains silent. Acc. (treble clef) continues the eighth-note accompaniment pattern.

95

Synth. 

S. Guit. 

Acc. 

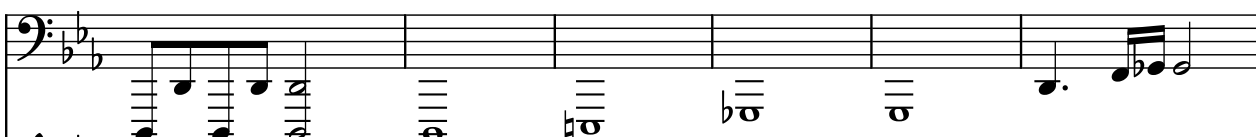
99

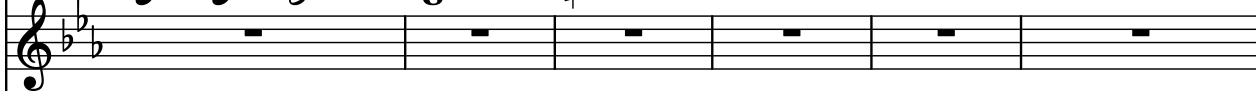
Synth. 

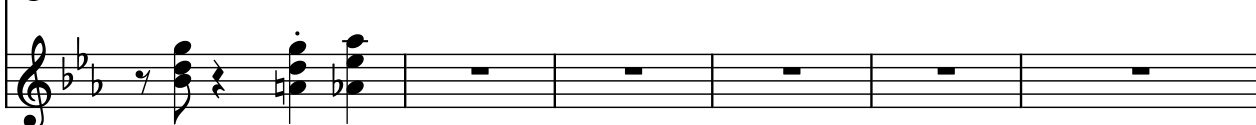
S. Guit. 

Acc. 

103

Synth. 

S. Guit. 

Acc. 

109

Synth. 

S. Guit. 

Acc. 

114

Synth.

S. Guit.

Acc.

Measures 114-116. The Synth. part (bass clef) plays a continuous eighth-note line. The S. Guit. part (treble clef) is silent. The Acc. part (treble clef) plays a sequence of chords and single notes, including a triplet of eighth notes in measure 115.

117

Synth.

S. Guit.

Acc.

Measures 117-119. The Synth. part (bass clef) continues its eighth-note line. The S. Guit. part (treble clef) is silent. The Acc. part (treble clef) continues its chordal and melodic accompaniment.

120

Synth.

S. Guit.

Acc.

Measures 120-122. The Synth. part (bass clef) continues its eighth-note line. The S. Guit. part (treble clef) is silent. The Acc. part (treble clef) continues its chordal and melodic accompaniment.

123

Synth.

S. Guit.

Acc.

Measures 123-125. The Synth. part (bass clef) continues its eighth-note line. The S. Guit. part (treble clef) is silent. The Acc. part (treble clef) continues its chordal and melodic accompaniment.

126

Synth.

S. Guit.

Acc.

126

129

Synth.

S. Guit.

Acc.

129