

Tension

Composer: Noriyuki Iwadare

Game: Front Mission: Gun Hazard (Japan)

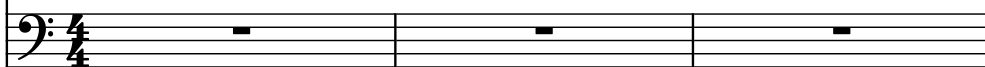
pianogame.org

♩ = 117

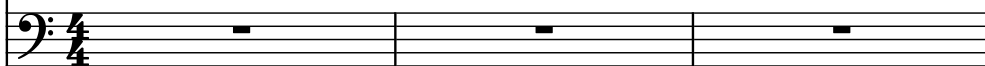
Effect Synthesizer, Bass



Harpsichord, Harpsichord



Violoncellos (section), Strings



4

Synth.



Hch.



Vcs.



7

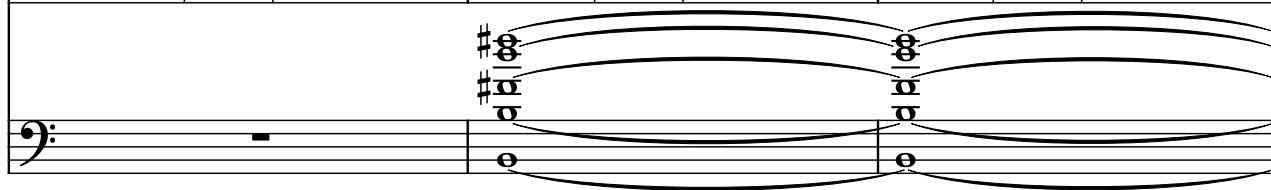
Synth.



Hch.

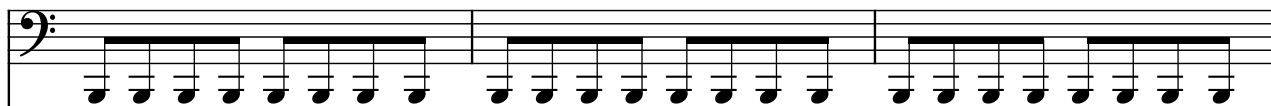


Vcs.



10

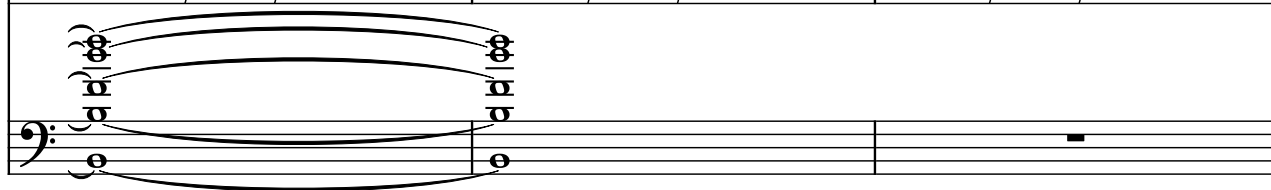
Synth.



Hch.



Vcs.



13

Synth.

Hch.

Vcs.

Measures 13-15. Synth. and Hch. parts are active, while Vcs. is silent until measure 15 where it enters with a low, sustained note.

16

Synth.

Hch.

Vcs.

Measures 16-18. Synth. and Hch. parts are active, while Vcs. is silent until measure 18 where it enters with a low, sustained note.

19

Synth.

Hch.

Vcs.

Measures 19-21. Synth. and Hch. parts are active, while Vcs. is silent until measure 21 where it enters with a low, sustained note.

22

Synth.

Hch.

Vcs.

Measures 22-24. Synth. and Hch. parts are active, while Vcs. is silent until measure 24 where it enters with a low, sustained note.

25

Synth.

Hch.

Vcs.

28

Synth.

Hch.

Vcs.

31

Synth.

Hch.

Vcs.

34

Synth.

Hch.

Vcs.

37

Synth.

Hch.

Vcs.

40

Synth.

Hch.

Vcs.

This system contains measures 40, 41, and 42. The Synth. part (bass clef) plays a continuous eighth-note pattern. The Hch. part (bass clef) plays a continuous eighth-note pattern with slurs. The Vcs. part (bass clef) is silent, indicated by a whole rest in each measure.

43

Synth.

Hch.

Vcs.

This system contains measures 43, 44, and 45. The Synth. part (bass clef) plays a continuous eighth-note pattern. The Hch. part (bass clef) plays a continuous eighth-note pattern with slurs. The Vcs. part (bass clef) is silent, indicated by a whole rest in each measure.

46

Synth.

Hch.

Vcs.

This system contains measures 46, 47, and 48. The Synth. part (bass clef) plays a continuous eighth-note pattern. The Hch. part (bass clef) plays a continuous eighth-note pattern with slurs. The Vcs. part (bass clef) has a sustained chord of three notes (F#2, C3, F#2) across measures 46 and 47, indicated by a slur and a repeat sign. In measure 48, the Vcs. part is silent, indicated by a whole rest.

49

Synth.

Hch.

Vcs.

This system contains measures 49, 50, 51, and 52. The Synth. part (bass clef) plays a continuous eighth-note pattern. The Hch. part (bass clef) is silent, indicated by a whole rest in each measure. The Vcs. part (bass clef) has a sustained chord of three notes (F#2, C3, F#2) across measures 49, 50, 51, and 52, indicated by a slur and a repeat sign.

53

Synth.

Hch.

Vcs.

56

Synth.

Hch.

Vcs.

59

Synth.

Hch.

Vcs.

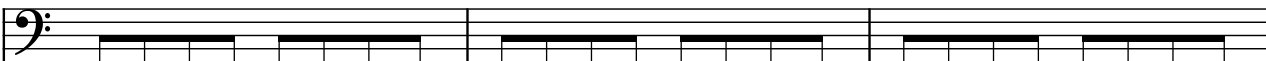
62

Synth.

Hch.

Vcs.

65

Synth. 

Hch. 

Vcs. 

68

Synth. 

Hch. 

Vcs. 

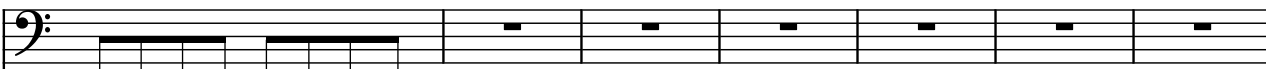
71


Synth. 

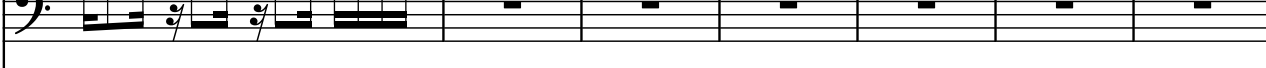
Hch. 

Vcs. 


74


Synth. 

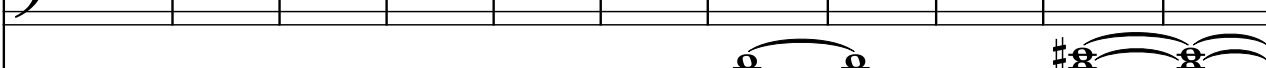
Hch. 

Vcs. 

81

Synth. 

Hch. 

Vcs. 

92

Synth.

Hch.

Vcs.

The image shows a musical score for three staves: Synth., Hch., and Vcs. The Synth. and Hch. staves are empty, indicating they are silent. The Vcs. staff has a treble clef and a key signature of one flat. It contains a descending eighth-note scale in the right hand (G4, F4, E4, D4, C4, B3, A3, G3) and a single eighth note (G3) in the left hand. The music ends with a double bar line.