

# **Level 1: Brick Level (2)**

Composer: Seiji Momoi

Game: Bugs Bunny's Crazy Castle

[pianogame.org](http://pianogame.org)

♩ = 96

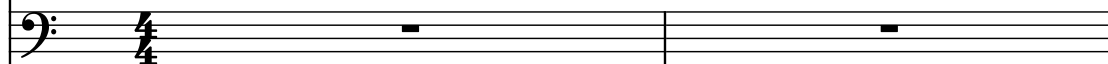
Violoncello, Track 1



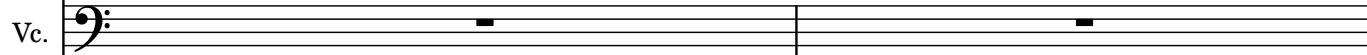
Clarinet, Track 2



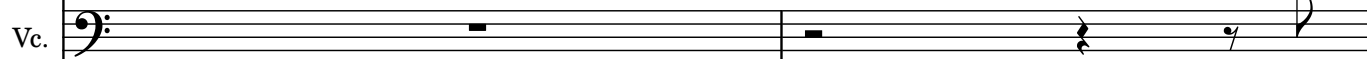
Violoncello, Track 3



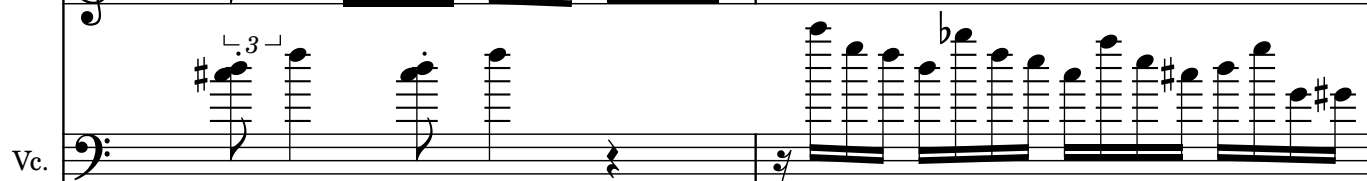
3



5



7



9

9

Vc.

Cl.

Vc.

11

11

Vc.

Cl.

Vc.

13

13

Vc.

Cl.

Vc.

15

15

Vc.

Cl.

Vc.

17

17

Vc.

Cl.

Vc.

3

20

20

Vc.

Cl.

Vc.

22

22

Vc.

Cl.

Vc.

3

24

24

Vc.

Cl.

Vc.

3

26

Measures 10-12 of the musical score for 'The Little Boat'. The score is for three parts: Violoncello (Vc.), Clarinet (Cl.), and Violoncello (Vc.).

- Measure 10:** The Vc. part (bass clef) plays a descending eighth-note scale: G2, F2, E2, D2. The Cl. part (treble clef, key signature of three sharps) plays a descending eighth-note scale: D4, C#4, B3, A3, G3, F#3, E3, D3. The Vc. part (bass clef) is silent.
- Measure 11:** The Vc. part (bass clef) plays a descending eighth-note scale: G2, F2, E2, D2. The Cl. part (treble clef) plays a descending eighth-note scale: D4, C#4, B3, A3, G3, F#3, E3, D3. The Vc. part (bass clef) is silent.
- Measure 12:** The Vc. part (bass clef) plays a descending eighth-note scale: G2, F2, E2, D2. The Cl. part (treble clef) plays a descending eighth-note scale: D4, C#4, B3, A3, G3, F#3, E3, D3. The Vc. part (bass clef) is silent.

28

Violoncello (Vc.), Clarinet (Cl.), Violoncello (Vc.)

Measures 10-12 of the musical score. The Violoncello (Vc.) part in the first staff plays a descending eighth-note scale in the first measure, followed by a triplet of eighth notes in the second measure, and a triplet of eighth notes in the third measure. The Clarinet (Cl.) part in the middle staff plays a descending eighth-note scale in the first measure, followed by a triplet of eighth notes in the second measure, and a triplet of eighth notes in the third measure. The Violoncello (Vc.) part in the third staff plays a descending eighth-note scale in the first measure, followed by a triplet of eighth notes in the second measure, and a triplet of eighth notes in the third measure.

30

The image shows a musical score for three staves. The top staff is for Violoncello (Vc.) in bass clef. The middle staff is for Clarinet (Cl.) in treble clef with a key signature of three sharps (F#, C#, G#). The bottom staff is for Violoncello (Vc.) in bass clef. The music is in 3/4 time. The Vc. parts feature eighth and sixteenth notes, while the Cl. part features more complex rhythms including triplets and sixteenth notes. There are various accidentals (sharps, flats, naturals) throughout the score.

32