

# **Of Devious Machinations (Clockwork Tower)**

Composer: Jake Kaufman

Game: Shovel Knight

[pianogame.org](http://pianogame.org)

♩ = 140

Measures 1-5 of the piece. The music is in 4/4 time with a key signature of three flats (B-flat, E-flat, A-flat). The right hand features a melodic line with eighth and sixteenth notes, while the left hand provides a harmonic accompaniment with sustained notes and some movement.

6

Measures 6-8. The right hand continues the melodic development with more complex rhythmic patterns, including triplets. The left hand remains mostly stationary, supporting the melody.

10

Measures 9-12. The right hand has a continuous eighth-note pattern. The left hand enters with a more active line, featuring eighth and sixteenth notes.

13

Measures 13-15. The right hand continues with eighth-note patterns. The left hand has a steady accompaniment of eighth notes.

16

Measures 16-18. The right hand features a melodic line with some rests. The left hand has a more active accompaniment, including a triplet in measure 18. A fermata is placed over the final note of measure 18.

19

Measures 19-21. The right hand continues with eighth-note patterns. The left hand has a melodic line that concludes with a long, sustained note in measure 21.

22

Measures 22-24 of a musical score in 3/4 time, key of B-flat major. The bass clef staff contains a continuous eighth-note melody. The treble clef staff has a whole rest in measure 22, followed by a half note in measure 23, and a half note in measure 24.

25

Measures 25-27 of a musical score in 3/4 time, key of B-flat major. The bass clef staff continues with an eighth-note melody. The treble clef staff has a half note in measure 25, a half note in measure 26, and a half note in measure 27.

28

Measures 28-30 of a musical score in 3/4 time, key of B-flat major. The bass clef staff continues with an eighth-note melody. The treble clef staff has a whole rest in measure 28, followed by a half note in measure 29, and a half note in measure 30.

31

Measures 31-33 of a musical score in 3/4 time, key of B-flat major. The bass clef staff continues with an eighth-note melody. The treble clef staff has a half note in measure 31, a whole rest in measure 32, and a half note in measure 33.

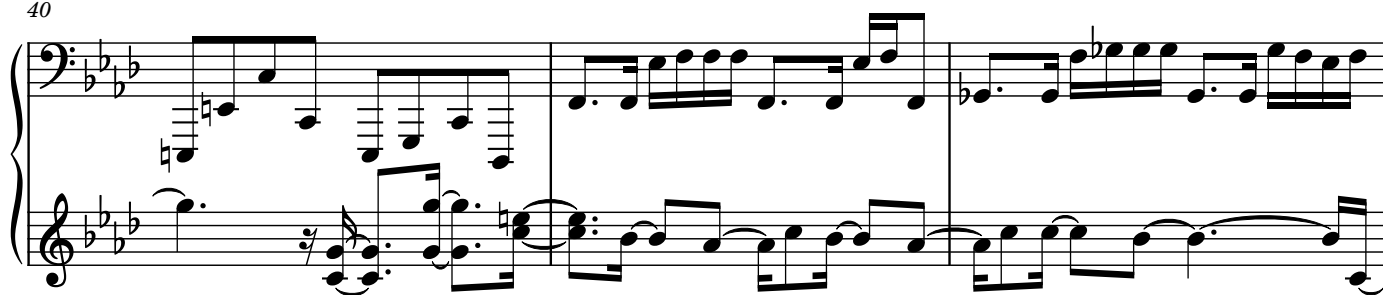
34

Measures 34-36 of a musical score in 3/4 time, key of B-flat major. The bass clef staff continues with an eighth-note melody. The treble clef staff has a half note in measure 34, a half note in measure 35, and a half note in measure 36.

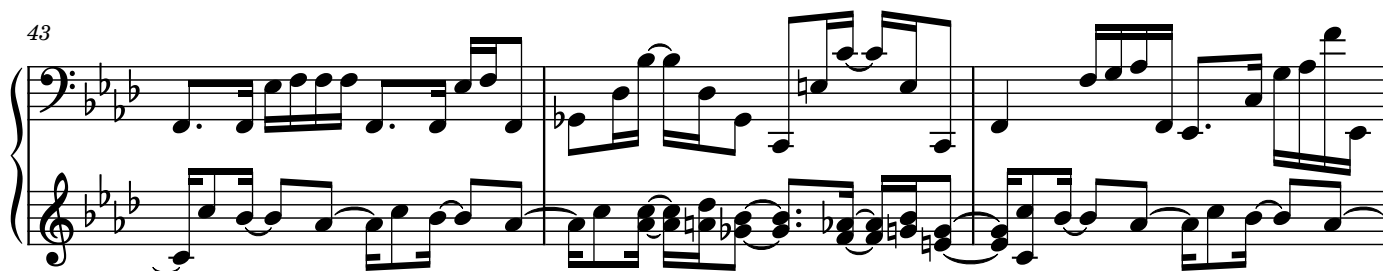
37

Measures 37-39 of a musical score in 3/4 time, key of B-flat major. The bass clef staff continues with an eighth-note melody. The treble clef staff has a half note in measure 37, a half note in measure 38, and a half note in measure 39.

40



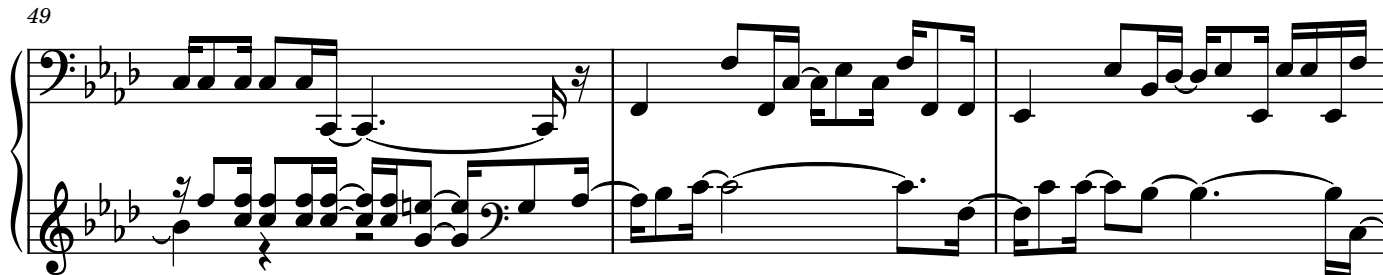
43



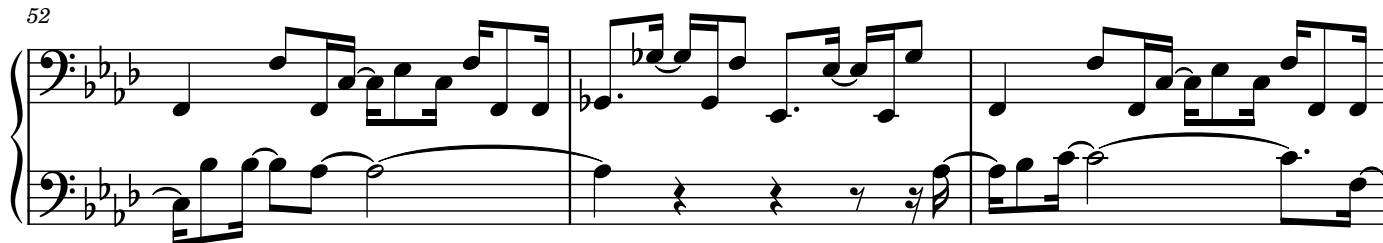
46



49



52



55



Measures 58-60 of a musical score in B-flat major (three flats). The piece is in 3/4 time. Measure 58 features a bass line with eighth and quarter notes and a treble line with eighth notes and a half note. Measure 59 continues the bass line and introduces a treble line with eighth notes. Measure 60 features a treble line with a triplet of eighth notes and a bass line with a half note.

Measures 61-62 of the musical score. Measure 61 shows a bass line with eighth notes and a treble line with a half note. Measure 62 features a bass line with eighth notes and a treble line with a half note.

Measures 63-65 of the musical score. Measure 63 features a bass line with eighth notes and a treble line with a half note. Measure 64 continues the bass line and introduces a treble line with eighth notes. Measure 65 features a treble line with a half note and a bass line with a half note.

Measures 66-68 of the musical score. Measure 66 features a bass line with eighth notes and a treble line with a half note. Measure 67 continues the bass line and introduces a treble line with eighth notes. Measure 68 features a treble line with a half note and a bass line with a half note.

Measures 69-70 of the musical score. Measure 69 features a bass line with eighth notes and a treble line with a half note. Measure 70 continues the bass line and introduces a treble line with eighth notes.

Measures 71-73 of the musical score. Measure 71 features a bass line with eighth notes and a treble line with a half note. Measure 72 continues the bass line and introduces a treble line with eighth notes. Measure 73 features a treble line with a half note and a bass line with a half note.

74

Measures 74-75 of a musical score in B-flat major (three flats). The bass staff features a continuous eighth-note melody. The treble staff has a melodic line with a long slur spanning measures 74 and 75, and a repeat sign at the end of measure 75.

76

Measures 76-78 of a musical score in B-flat major. The bass staff continues with eighth-note patterns. The treble staff features a melodic line with a long slur spanning measures 76 and 77, and a repeat sign at the end of measure 78.

79

Measures 79-81 of a musical score in B-flat major. The bass staff continues with eighth-note patterns. The treble staff features a melodic line with a long slur spanning measures 79 and 80, and a repeat sign at the end of measure 81.

82

Measures 82-84 of a musical score in B-flat major. The bass staff features a continuous eighth-note melody. The treble staff has a melodic line with a long slur spanning measures 82 and 83, and a repeat sign at the end of measure 84.

85

Measures 85-87 of a musical score in B-flat major. The bass staff continues with eighth-note patterns. The treble staff features a melodic line with a long slur spanning measures 85 and 86, and a repeat sign at the end of measure 87.

88

Measures 88-90 of a musical score in B-flat major. The bass staff continues with eighth-note patterns. The treble staff features a melodic line with a long slur spanning measures 88 and 89, and a repeat sign at the end of measure 90.

