

Strange Encounter (3)

Composer: Ryuji Sasai

Game: Rudora No Hihou (Japan)

pianogame.org

♩ = 149

Soprano, "Strange Encounter"

Rotary Organ, Composed by:

Violins (section), Ryuji Sasai

Measures 1-7: Soprano part begins with a half rest, then a half note G4, a half note A4, a half note Bb4, a quarter note G4, a quarter note F#4, a half note E4, and a half note D4. The Rotary Organ and Violins parts have whole rests.

8

S.

Rot. Org.

Vlns.

Measures 8-15: Soprano part continues with a half note C4, a half note B3, a half note A3, a half note G3, a half note F#3, a half note E3, a half note D3, and a half note C3. The Rotary Organ and Violins parts have whole rests.

16

S.

Rot. Org.

Vlns.

Measures 16-19: Soprano and Rotary Organ parts have whole rests. The Violins part plays a continuous eighth-note pattern: G4, A4, Bb4, A4, G4, F#4, E4, D4, C4, B3, A3, G3, F#3, E3, D3, C3.

20

S.

Rot. Org.

Vlns.

Measures 20-23: Soprano and Rotary Organ parts have whole rests. The Violins part continues the eighth-note pattern: G4, A4, Bb4, A4, G4, F#4, E4, D4, C4, B3, A3, G3, F#3, E3, D3, C3.

24

S.

Rot. Org.

Vlns.

Measures 24-31: Soprano part begins with a half rest, then a half note G4, a half note A4, a half note Bb4, a quarter note G4, a quarter note F#4, a half note E4, and a half note D4. The Rotary Organ and Violins parts have whole rests.

31

S.

Rot. Org.

Vlns.

40

S.

Rot. Org.

Vlns.

44

S.

Rot. Org.

Vlns.

48

S.

Rot. Org.

Vlns.

55

S.

Rot. Org.

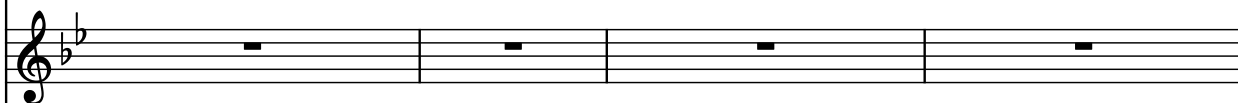
Vlns.

64

S.



Rot. Org.



Vlns.



68

S.



Rot. Org.

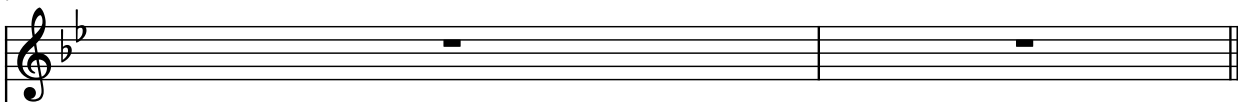


Vlns.



72

S.



Rot. Org.



Vlns.

