

# Unused Track 1

Composer: Hideki Naganuma

Game: F-Zero: Maximum Velocity

[pianogame.org](http://pianogame.org)

♩ = 155

Large Drum Kit, F-Zero - Maximum Velocity

Bass Guitar, Unused Track 1

Bass Guitar, Electric Bass

Measures 1-2 of the first system. The drum kit plays a complex pattern of eighth and sixteenth notes. The bass guitar tracks play a simple eighth-note pattern.

2

D. Kit

B. Guit.

B. Guit.

Measures 3-4 of the second system. The drum kit continues its complex pattern. The bass guitar tracks continue their simple eighth-note pattern.

4

D. Kit

B. Guit.

B. Guit.

Measures 5-6 of the third system. The drum kit continues its complex pattern. The bass guitar tracks continue their simple eighth-note pattern, with a key signature change to one flat (Bb) in measure 6.

6

D. Kit

B. Guit.

B. Guit.

Measures 7-8 of the fourth system. The drum kit continues its complex pattern. The bass guitar tracks continue their simple eighth-note pattern, with a key signature change to one flat (Bb) in measure 7.

8

D. Kit

B. Guit.

B. Guit.



10

D. Kit

B. Guit.

B. Guit.



12

D. Kit

B. Guit.

B. Guit.



14

D. Kit

B. Guit.

B. Guit.



16

D. Kit

B. Guit.

B. Guit.

Measures 16-17. The D. Kit part features a complex rhythmic pattern with many sixteenth notes. The B. Guit. parts play a bass line with eighth and quarter notes, including a key signature change from one flat to one sharp between measures 16 and 17.

18

D. Kit

B. Guit.

B. Guit.

Measures 18-19. The D. Kit part continues with its complex rhythmic pattern. The B. Guit. parts continue the bass line with eighth and quarter notes, maintaining the key signature of one sharp.

20

D. Kit

B. Guit.

B. Guit.

Measures 20-21. The D. Kit part continues with its complex rhythmic pattern. The B. Guit. parts continue the bass line with eighth and quarter notes, including a key signature change from one sharp to one flat between measures 20 and 21.

22

D. Kit

B. Guit.

B. Guit.

Measures 22-23. The D. Kit part continues with its complex rhythmic pattern. The B. Guit. parts continue the bass line with eighth and quarter notes, maintaining the key signature of one flat.

24

D. Kit

B. Guit.

B. Guit.

Measures 24-25. The D. Kit part features a complex rhythmic pattern with many sixteenth notes. The B. Guit. parts play a bass line with eighth and quarter notes, including a key signature change from one flat to one sharp between measures 24 and 25.

26

D. Kit

B. Guit.

B. Guit.

Measures 26-27. The D. Kit part continues with its complex rhythmic pattern. The B. Guit. parts continue the bass line with eighth and quarter notes, maintaining the key signature of one sharp.

28

D. Kit

B. Guit.

B. Guit.

Measures 28-29. The D. Kit part continues with its complex rhythmic pattern. The B. Guit. parts continue the bass line with eighth and quarter notes, including a key signature change from one sharp to one flat between measures 28 and 29.

30

D. Kit

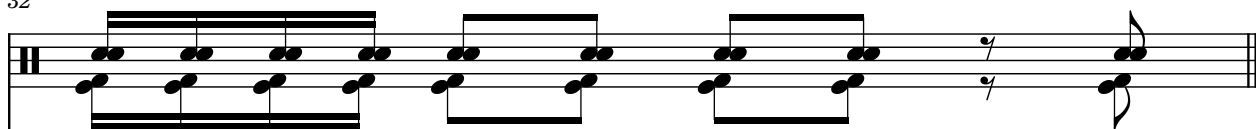
B. Guit.

B. Guit.

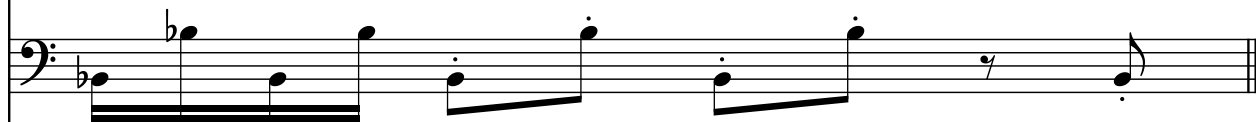
Measures 30-31. The D. Kit part continues with its complex rhythmic pattern. The B. Guit. parts continue the bass line with eighth and quarter notes, maintaining the key signature of one flat.

32

D. Kit



B. Guit.



B. Guit.

