

# Omake 3

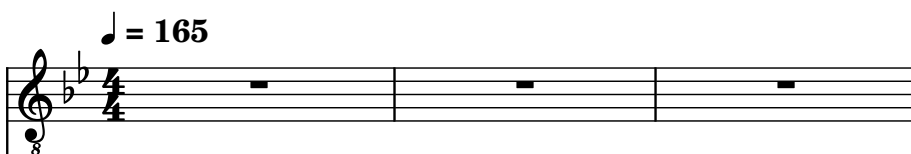
Composer: Toshiharu Yamanishi

Game: Lightning Force

[pianogame.org](http://pianogame.org)

♩ = 165

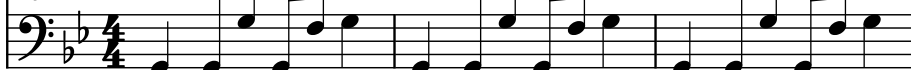
Electric Guitar, tk1 [ Melody ]



Electric Guitar, tk2 [ Melody Echo ]

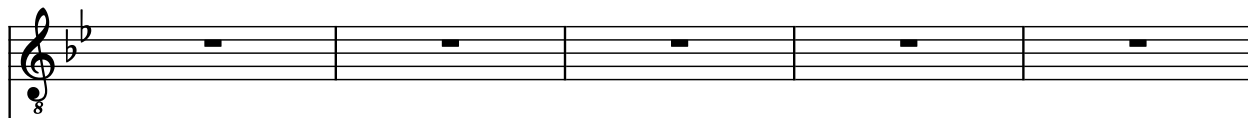


5-str. Electric Bass, tk3 [ Bass ]

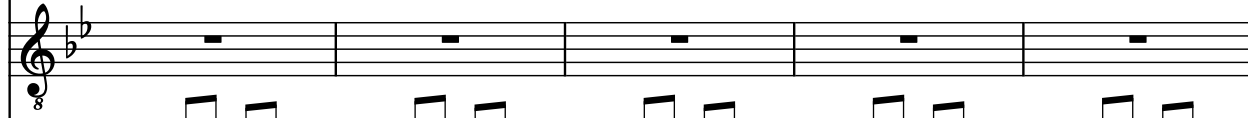


4

El. Guit.



El. Guit.

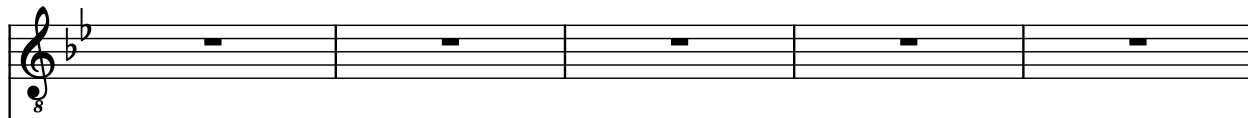


El. B.

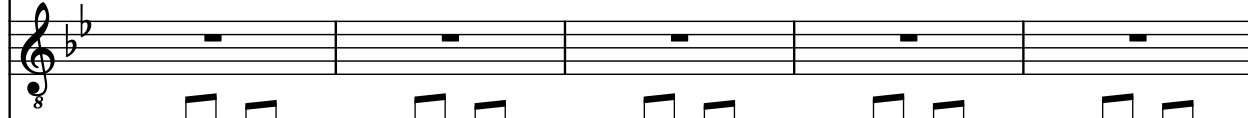


9

El. Guit.



El. Guit.

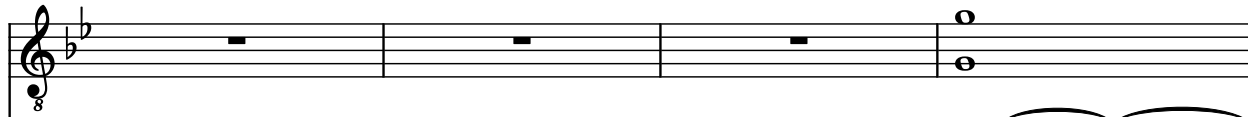


El. B.



14

El. Guit.



El. Guit.



El. B.

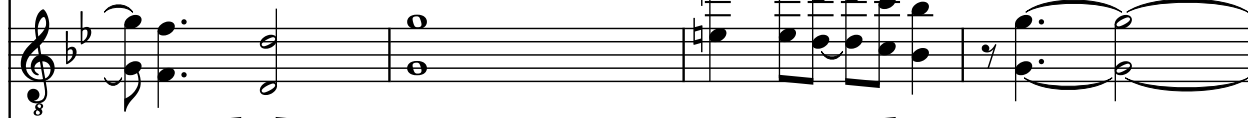


18

El. Guit.



El. Guit.



El. B.



22

El. Guit.

El. Guit.

El. B.

26

El. Guit.

El. Guit.

El. B.

30

El. Guit.

El. Guit.

El. B.

34

El. Guit.

El. Guit.

El. B.

38

El. Guit.

El. Guit.

El. B.

42

El. Guit.

El. Guit.

El. B.

45

El. Guit.

El. Guit.

El. B.

48

El. Guit.

El. Guit.

El. B.

51

El. Guit.

El. Guit.

El. B.

54

El. Guit.

El. Guit.

El. B.

57

El. Guit.

El. Guit.

El. B.

Measures 57-60: The first electric guitar part consists of whole rests. The second electric guitar and bass parts play a continuous eighth-note pattern, primarily on the lower strings.

61

El. Guit.

El. Guit.

El. B.

Measures 61-64: The first electric guitar part has whole rests for measures 61-63 and a short phrase in measure 64. The second electric guitar and bass parts continue the eighth-note pattern.

65

El. Guit.

El. Guit.

El. B.

Measures 65-68: The first electric guitar part features long sustained chords (half notes) in measures 65-66 and 67-68. The second electric guitar and bass parts continue the eighth-note pattern.

69

El. Guit.

El. Guit.

El. B.

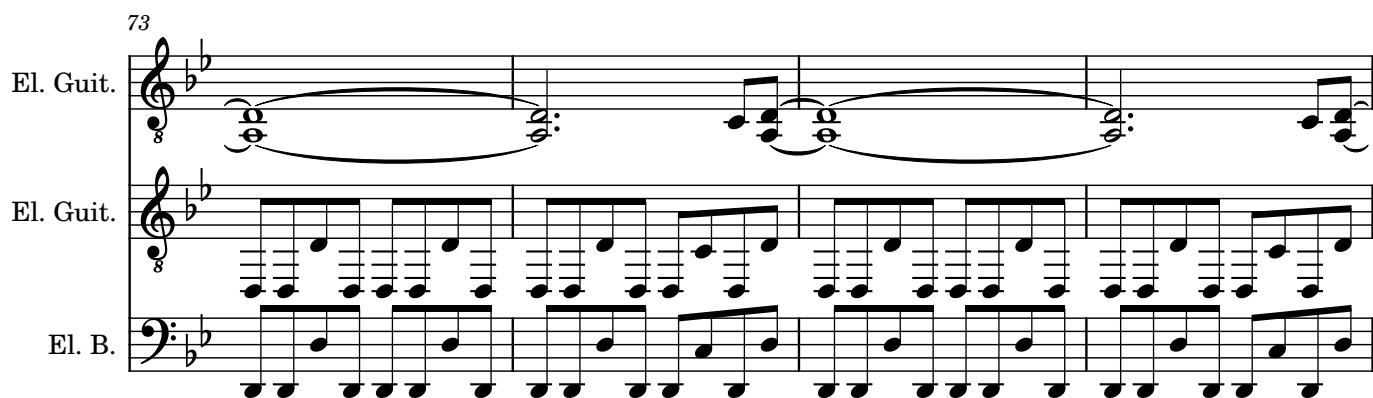
Measures 69-72: The first electric guitar part features short, repeated phrases in measures 69-72. The second electric guitar and bass parts continue the eighth-note pattern.

73

El. Guit.

El. Guit.

El. B.



77

El. Guit.

El. Guit.

El. B.

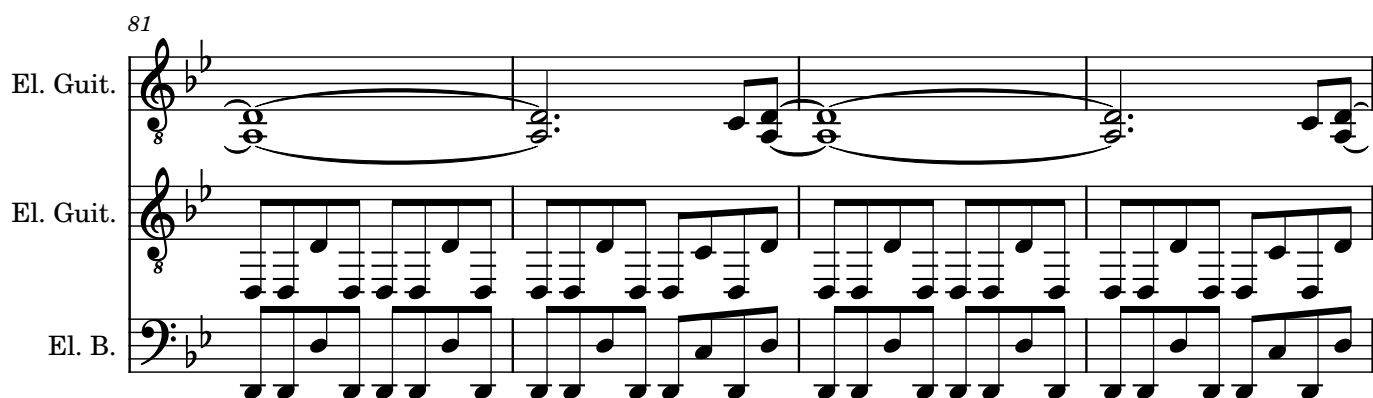


81

El. Guit.

El. Guit.

El. B.



85

El. Guit.

El. Guit.

El. B.



89

El. Guit.

El. Guit.

El. B.

92

El. Guit.

El. Guit.

El. B.

95

El. Guit.

El. Guit.

El. B.

98

El. Guit.

El. Guit.

El. B.

101

El. Guit.

El. Guit.

El. B.

104

El. Guit.

El. Guit.

El. B.

107

El. Guit.

El. Guit.

El. B.

110

El. Guit.

El. Guit.

El. B.

113

El. Guit.

El. Guit.

El. B.



117

El. Guit.

El. Guit.

El. B.

Measures 117-121: The electric guitar parts are silent, while the electric bass plays a continuous eighth-note pattern.

122

El. Guit.

El. Guit.

El. B.

Measures 122-126: The electric guitar parts are silent, while the electric bass continues the eighth-note pattern.

127

El. Guit.

El. Guit.

El. B.

Measures 127-130: The electric guitar parts remain silent until measure 130, where they enter with sustained notes.

131

El. Guit.

El. Guit.

El. B.

Measures 131-134: The electric guitar parts play complex, melodic lines with ties, while the electric bass continues the eighth-note pattern.

135

El. Guit.

El. Guit.

El. B.

Measures 135-138: The electric guitar parts continue with complex melodic lines, and the electric bass continues the eighth-note pattern.

139

El. Guit.

El. Guit.

El. B.

143

El. Guit.

El. Guit.

El. B.

147

El. Guit.

El. Guit.

El. B.

151

El. Guit.

El. Guit.

El. B.

155

El. Guit.

El. Guit.

El. B.

158

El. Guit.

El. Guit.

El. B.

161

El. Guit.

El. Guit.

El. B.

164

El. Guit.

El. Guit.

El. B.

167

El. Guit.

El. Guit.

El. B.

170

El. Guit.

El. Guit.

El. B.

174

El. Guit.

El. Guit.

El. B.

8

178

El. Guit.

El. Guit.

El. B.

8

182

El. Guit.

El. Guit.

El. B.

8

186

El. Guit.

El. Guit.

El. B.

8

190

El. Guit.

El. Guit.

El. B.

8

194

El. Guit.

El. Guit.

El. B.

8

198

El. Guit.

El. Guit.

El. B.

8

202

El. Guit.

El. Guit.

El. B.

8

205

El. Guit.

El. Guit.

El. B.

8

208

El. Guit.

El. Guit.

El. B.

8

211

El. Guit.

El. Guit.

El. B.

8

214

El. Guit.

El. Guit.

El. B.

8

217

El. Guit.

El. Guit.

El. B.

8

220

El. Guit.

El. Guit.

El. B.

This system contains measures 220, 221, and 222. The first two staves are for Electric Guitar (El. Guit.) in treble clef, and the third staff is for Electric Bass (El. B.) in bass clef. The key signature has two flats (B-flat and E-flat). Measure 220 features a melodic line in the guitars and a steady eighth-note bass line. Measure 221 continues the melodic development with some sustained notes. Measure 222 shows the guitars playing sustained notes while the bass continues its eighth-note pattern.

223

El. Guit.

El. Guit.

El. B.

This system contains measures 223, 224, and 225. The instrumentation remains the same. Measure 223 introduces a new melodic phrase in the guitars. Measure 224 features a more complex melodic line with some grace notes. Measure 225 concludes the system with sustained notes in the guitars and a final eighth-note in the bass.

226

El. Guit.

El. Guit.

El. B.

This system contains measures 226, 227, and 228. Measure 226 shows a melodic phrase in the guitars. Measure 227 continues with sustained notes. Measure 228 is the final measure of the system, featuring a melodic phrase in the guitars and a final eighth-note in the bass, ending with a double bar line.