

# Mushroom Hill Zone: Act 1 (6)

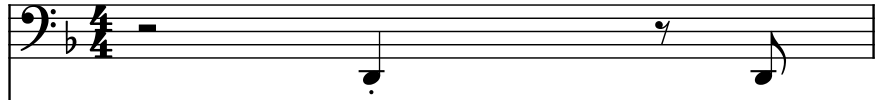
Composer: Brad Buxer

Game: Sonic & Knuckles

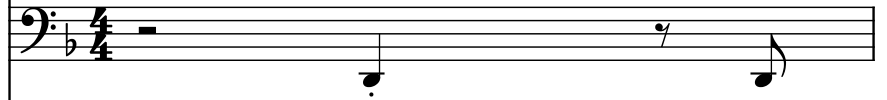
[pianogame.org](http://pianogame.org)

♩ = 110

Bass Synthesizer, Synth Bass 1 (Left)



Bass Synthesizer, Synth Bass 1 (Right)



Brass Synthesizer, Synth Brass 1



┌ 3 ┐

2

Synth.



┌ 3 ┐

Synth.



┌ 3 ┐

Synth.



5

Synth.

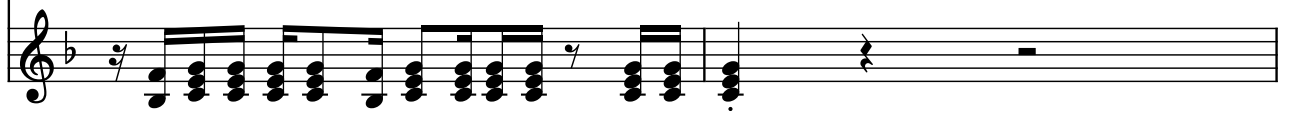


Synth.



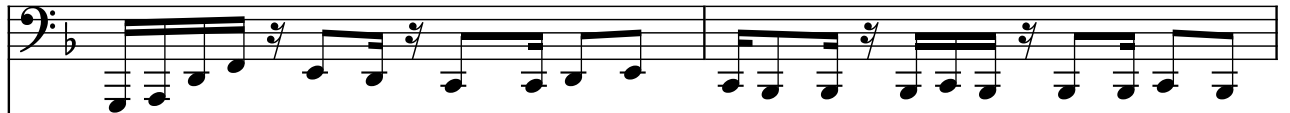
┌ 3 ┐

Synth.



7

Synth.



Synth.



┌ 3 ┐

Synth.





9

Synth.   




Musical notation for measures 9-10, featuring three staves (Synth.). The notation includes eighth and sixteenth notes, rests, and a triplet of eighth notes in the second staff.

11

Synth.   


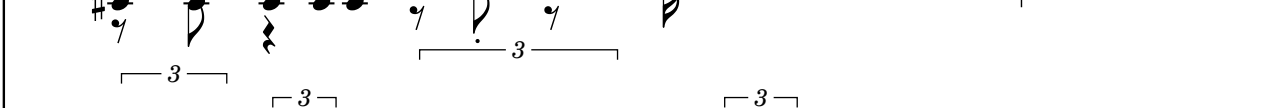
Musical notation for measures 11-12, featuring three staves (Synth.). The notation includes eighth and sixteenth notes, rests, and a triplet of eighth notes in the second staff.

13


Synth.   

Musical notation for measures 13-14, featuring three staves (Synth.). The notation includes eighth and sixteenth notes, rests, and triplet markings in the second and third staves.

15

Synth.   

Musical notation for measures 15-16, featuring three staves (Synth.). The notation includes eighth and sixteenth notes, rests, and triplet markings in the first and second staves.



Musical notation for measures 17-18, featuring the third staff (Synth.). The notation includes eighth and sixteenth notes, rests, and a triplet of eighth notes.

17

Synth.

Three staves of music in bass clef, labeled 'Synth.'. The first two staves have a key signature of one flat (Bb) and a common time signature. The third staff has a key signature of one flat (Bb) and a common time signature. The music features various rhythmic patterns, including eighth and sixteenth notes, and rests. There are several triplet markings (3) over groups of notes. The first staff has triplet markings over measures 17, 18, and 19. The second staff has triplet markings over measures 17, 18, and 19. The third staff has a triplet marking over measure 19.

19

Synth.

Three staves of music in bass clef, labeled 'Synth.'. The first two staves have a key signature of one flat (Bb) and a common time signature. The third staff has a key signature of one flat (Bb) and a common time signature. The music features various rhythmic patterns, including eighth and sixteenth notes, and rests. There are several triplet markings (3) over groups of notes. The first staff has triplet markings over measures 19, 20, and 21. The second staff has triplet markings over measures 19, 20, and 21. The third staff has triplet markings over measures 19, 20, and 21.

21

Synth.

Three staves of music in bass clef, labeled 'Synth.'. The first two staves have a key signature of one flat (Bb) and a common time signature. The third staff has a key signature of one flat (Bb) and a common time signature. The music features various rhythmic patterns, including eighth and sixteenth notes, and rests. There are several triplet markings (3) over groups of notes. The first staff has triplet markings over measures 21, 22, and 23. The second staff has triplet markings over measures 21, 22, and 23. The third staff has triplet markings over measures 21, 22, and 23.

23

Synth.

Synth.

Synth.

3

25

Synth.

Synth.

Synth.

3

27

Synth.

Synth.

Synth.

3

29

Synth.

Synth.

Synth.

3

31

Synth. 

Synth. 

Synth. 

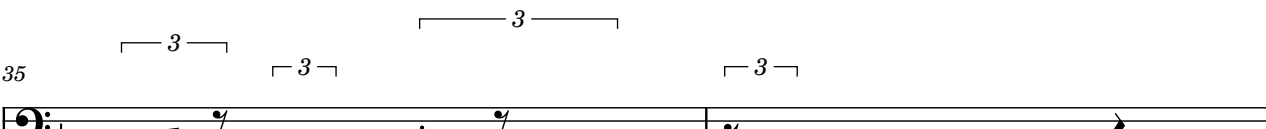
33

Synth. 


Synth. 

Synth. 

35

Synth. 

Synth. 

Synth. 

37

Synth.

Synth.

Synth.

39

Synth.

Synth.

Synth.

41

Synth.

Synth.

Synth.

43

Synth.

Synth.

Synth.

3

45

Synth.

Synth.

Synth.

3