

# Battle (4)

Composer: Motoi Sakuraba

Game: Star Ocean: The Second Story

[pianogame.org](http://pianogame.org)

♩ = 181

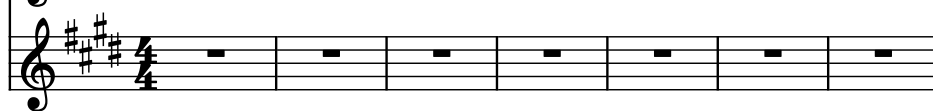
Baroque Trumpet, Piano



Mallet Synthesizer, Acoustic Bass



Trumpet, Clarinet



8

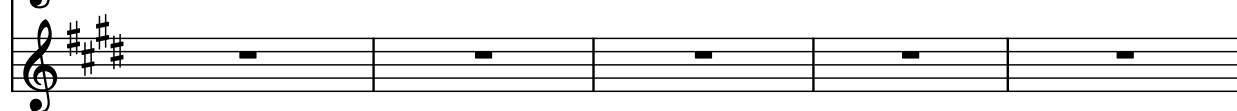
Bq. Tpt.



Mal. Syn.



Tpt.

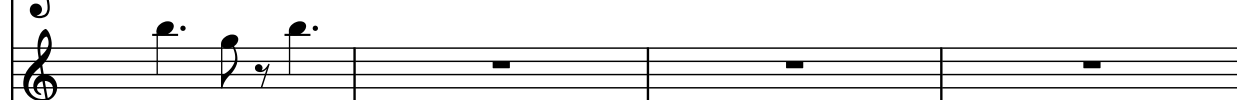


13

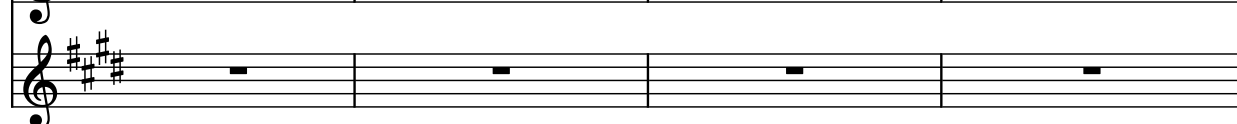
Bq. Tpt.



Mal. Syn.



Tpt.

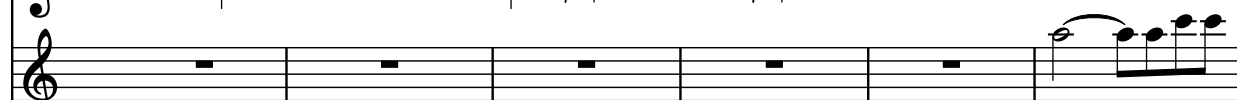


17

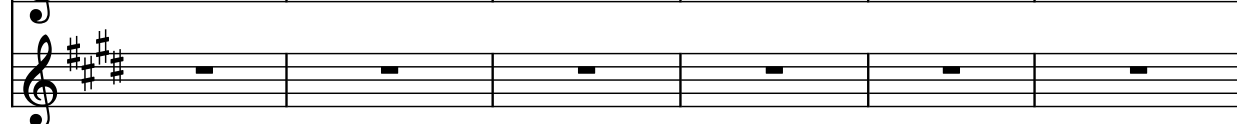
Bq. Tpt.



Mal. Syn.



Tpt.

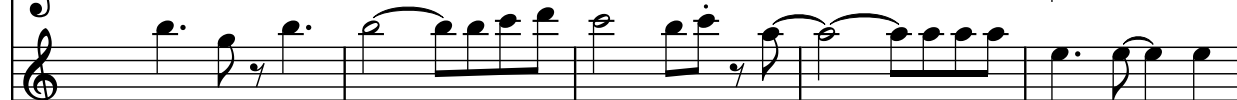


23

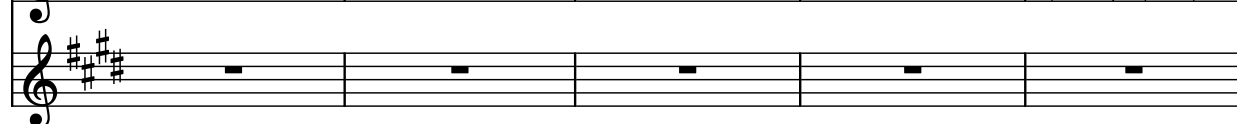
Bq. Tpt.



Mal. Syn.



Tpt.

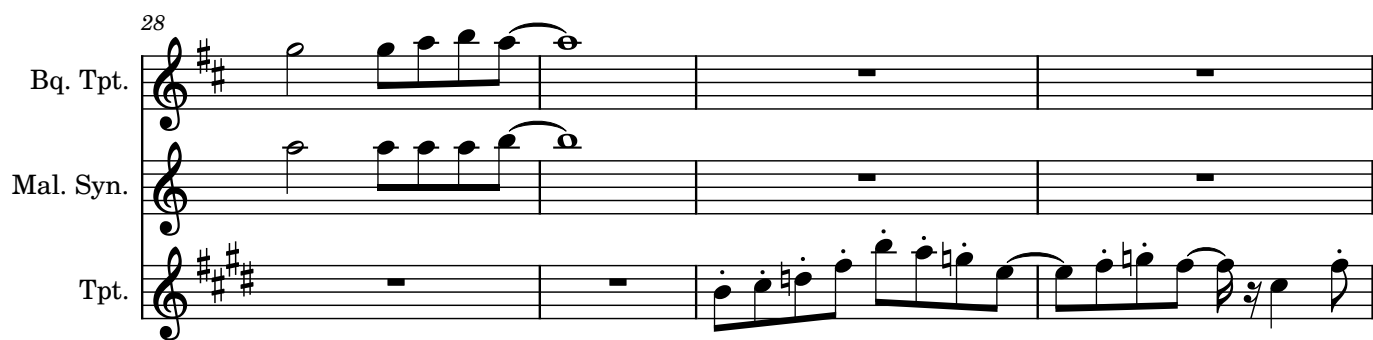


28

Bq. Tpt.

Mal. Syn.

Tpt.



32

Bq. Tpt.

Mal. Syn.

Tpt.



36

Bq. Tpt.

Mal. Syn.

Tpt.

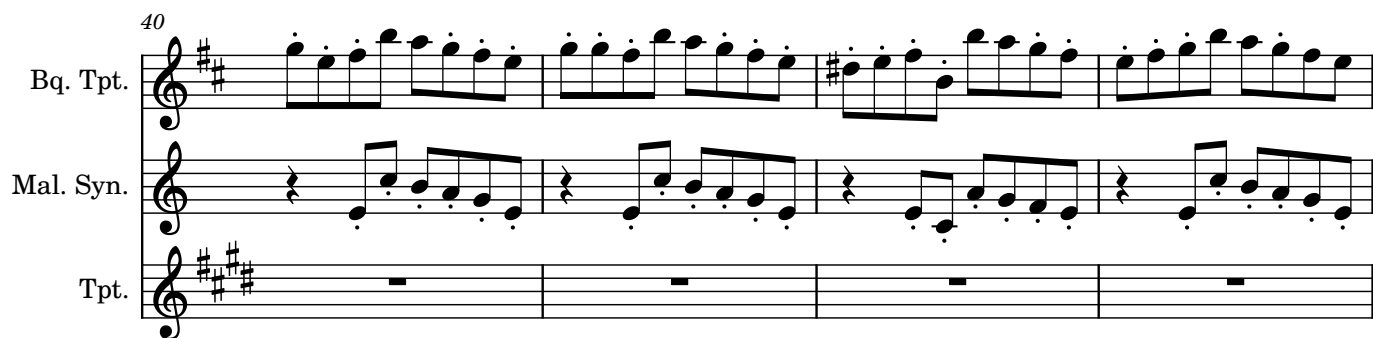


40

Bq. Tpt.

Mal. Syn.

Tpt.

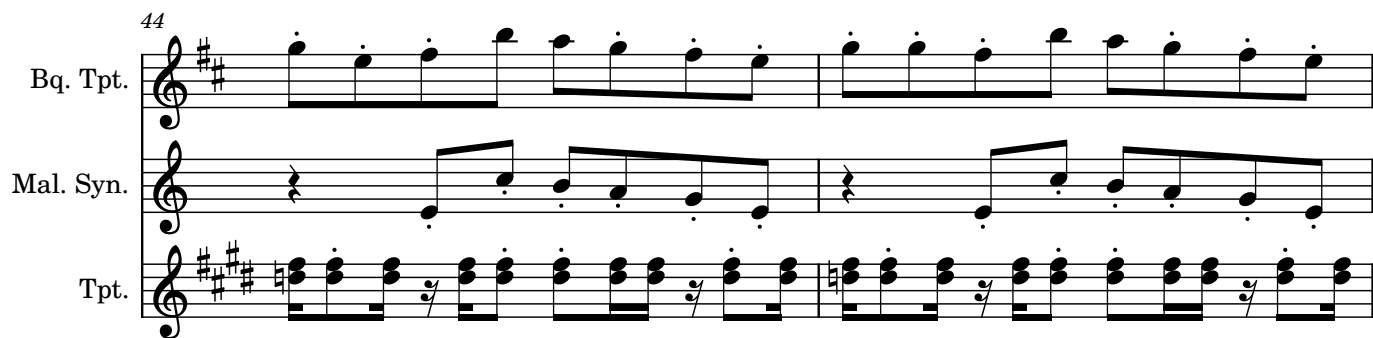


44

Bq. Tpt.

Mal. Syn.

Tpt.



46

Bq. Tpt.

Mal. Syn.

Tpt.

49

Bq. Tpt.

Mal. Syn.

Tpt.

53

Bq. Tpt.

Mal. Syn.

Tpt.

58

Bq. Tpt.

Mal. Syn.

Tpt.

62

Bq. Tpt.

Mal. Syn.

Tpt.

66

Bq. Tpt.

Mal. Syn.

Tpt.

Measures 66-70: Bq. Tpt. and Mal. Syn. play a melodic line consisting of eighth and sixteenth notes. Tpt. has whole rests.

71

Bq. Tpt.

Mal. Syn.

Tpt.

Measures 71-75: Bq. Tpt. continues the melodic line. Mal. Syn. and Tpt. have whole rests.

76

Bq. Tpt.

Mal. Syn.

Tpt.

Measures 76-80: Bq. Tpt. and Mal. Syn. play a melodic line. Tpt. has whole rests.

81

Bq. Tpt.

Mal. Syn.

Tpt.

Measures 81-85: Bq. Tpt. and Mal. Syn. play a melodic line. Tpt. has whole rests.

86

Bq. Tpt.

Mal. Syn.

Tpt.

Measures 86-90: Bq. Tpt. and Mal. Syn. have whole rests. Tpt. plays a complex melodic line with many accidentals.

90

Bq. Tpt.

Mal. Syn.

Tpt.

93

Bq. Tpt.

Mal. Syn.

Tpt.

97

Bq. Tpt.

Mal. Syn.

Tpt.

100

Bq. Tpt.

Mal. Syn.

Tpt.

102

Bq. Tpt.

Mal. Syn.

Tpt.

105

Bq. Tpt.

Mal. Syn.

Tpt.

Measures 105-108. Bq. Tpt. and Mal. Syn. are silent. Tpt. plays a melodic line in G major: G4 (quarter), A4-B4 (beamed eighth notes), C5 (quarter), B4-A4 (beamed eighth notes), G4 (quarter), F#4-E4 (beamed eighth notes), D4 (half).

109

Bq. Tpt.

Mal. Syn.

Tpt.

Measures 109-113. Bq. Tpt. and Mal. Syn. are silent. Tpt. continues the melodic line: C5 (quarter), B4-A4 (beamed eighth notes), G4 (quarter), F#4-E4 (beamed eighth notes), D4 (half), C5 (quarter), B4-A4 (beamed eighth notes), G4 (quarter), F#4-E4 (beamed eighth notes), D4 (half).

114

Bq. Tpt.

Mal. Syn.

Tpt.

Measures 114-117. Bq. Tpt. and Mal. Syn. are silent. Tpt. continues the melodic line: C5 (quarter), B4-A4 (beamed eighth notes), G4 (quarter), F#4-E4 (beamed eighth notes), D4 (half), C5 (quarter), B4-A4 (beamed eighth notes), G4 (quarter), F#4-E4 (beamed eighth notes), D4 (half).

118

Bq. Tpt.

Mal. Syn.

Tpt.

Measures 118-121. Bq. Tpt. and Mal. Syn. are silent. Tpt. concludes the melodic line: C5 (quarter), B4-A4 (beamed eighth notes), G4 (quarter), F#4-E4 (beamed eighth notes), D4 (half), C5 (quarter), B4-A4 (beamed eighth notes), G4 (quarter), F#4-E4 (beamed eighth notes), D4 (half).